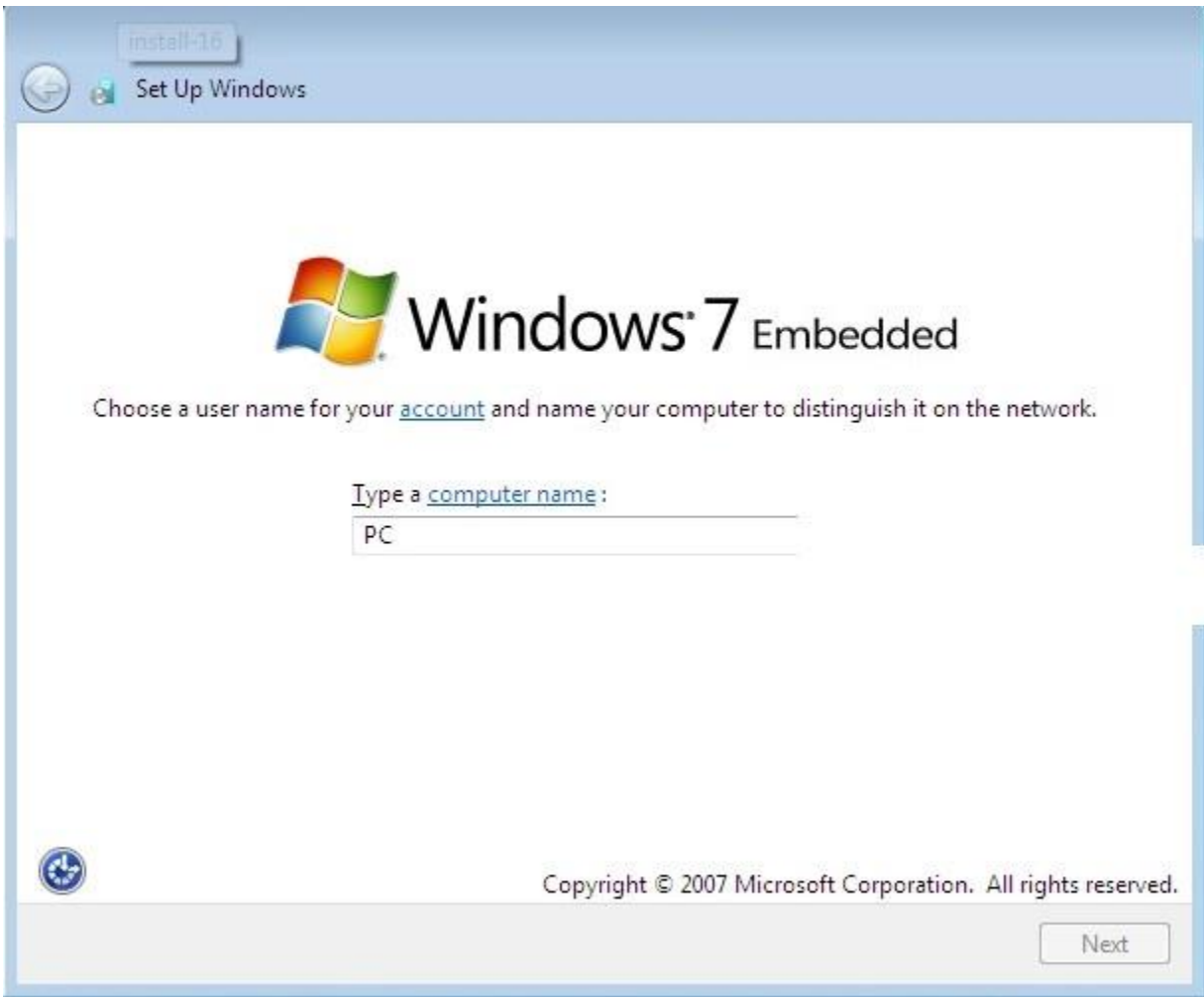




Windows 7 Embedded Standard

Setup Guide

Upon first boot, the Windows 7 embedded thin client will boot to the screen as seen below:



Enter a computer name for the thin client. The “computer name” is the same as if you were to name your PC in My Computer -> Properties. This is a required step.

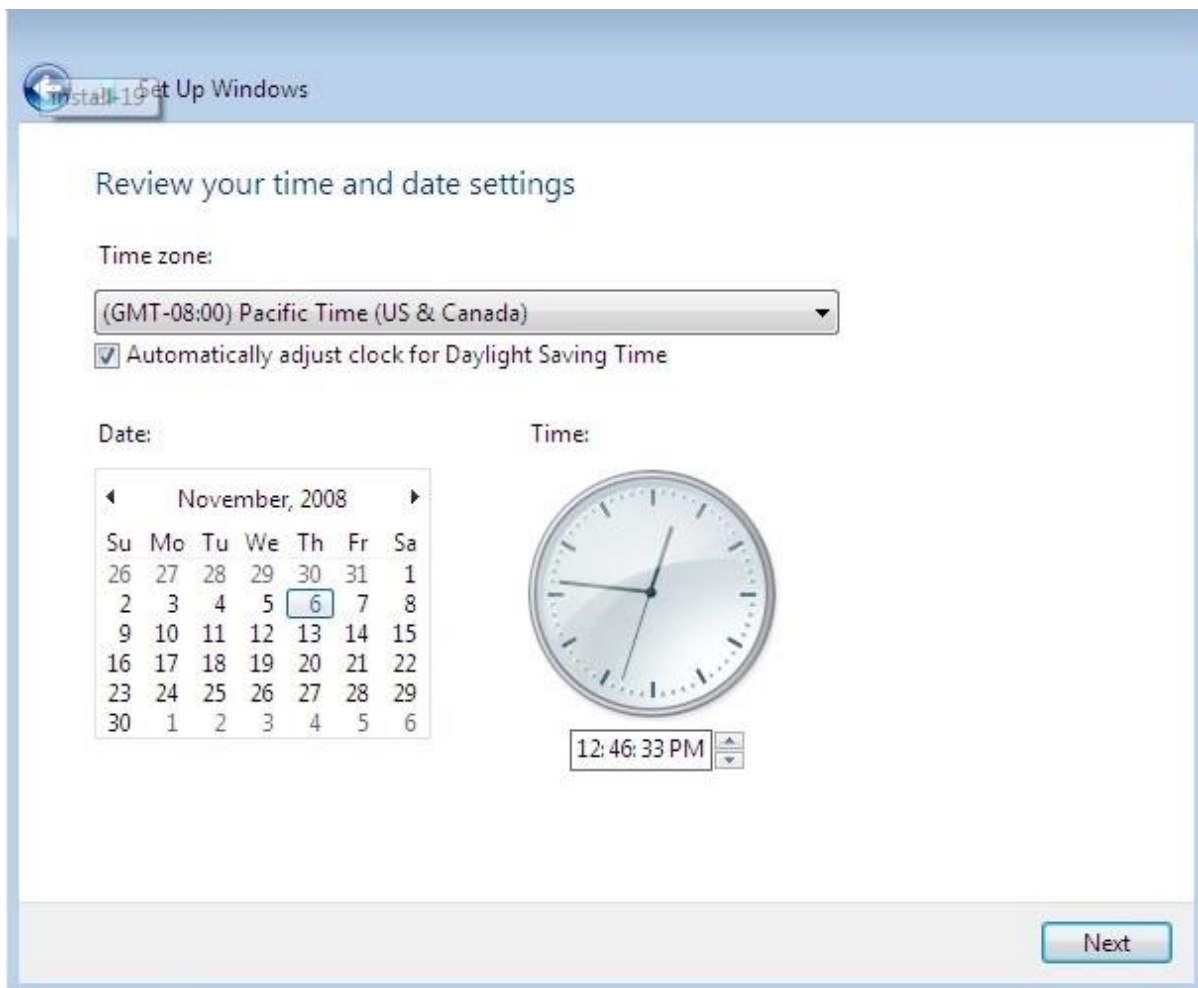
The image has two users pre-configured:

- User "Administrator" - password "admin"
- User "ThinClientUser" - password "ThinClientUser"

Select Next

The next screen presented is to set Time Zone, Date and Time.

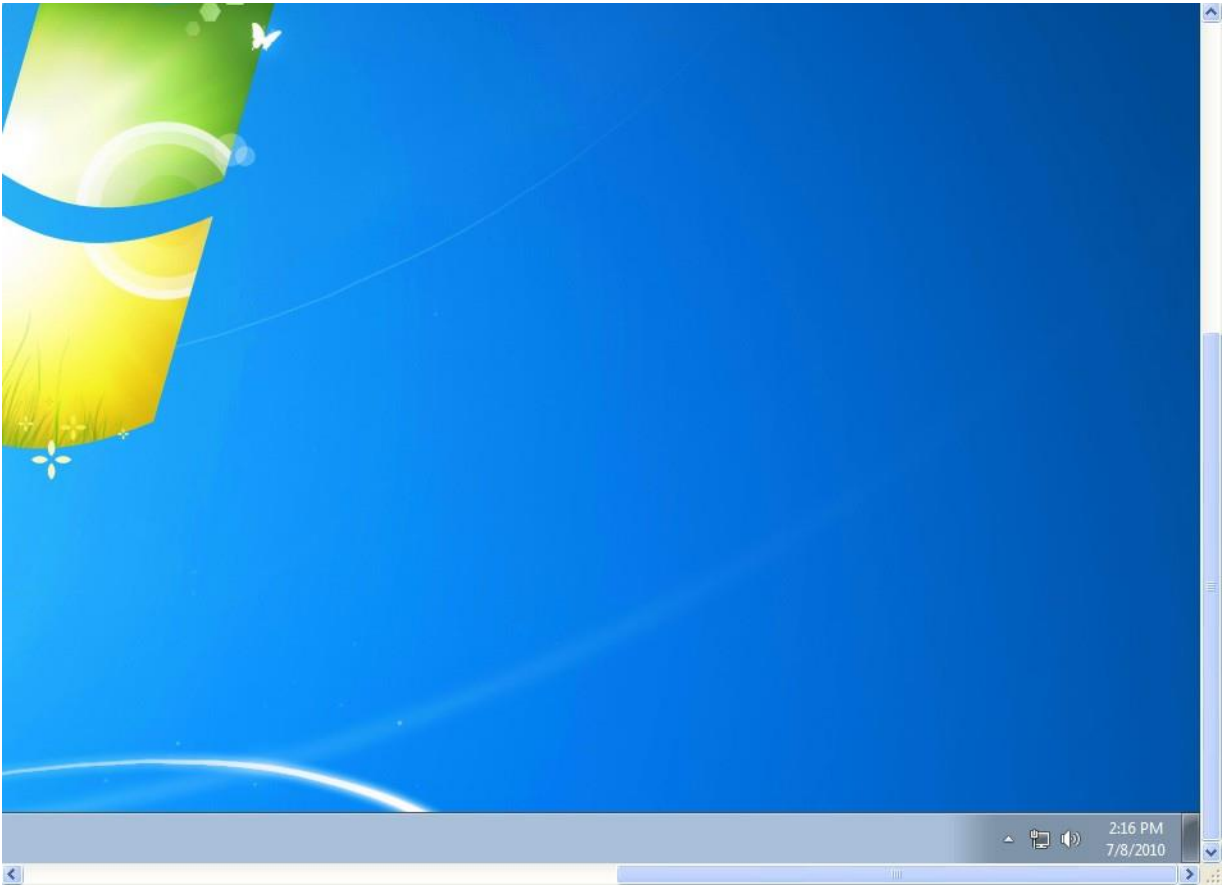
Please set each to your match your current date and time settings.



Select Next

The Windows 7 Embedded thin client will continue the setup process.





Once the initial configuration process has completed, the Windows 7 Embedded Standard thin client will have automatically logged on as user “ThinClientUser” which is a limited user. ThinClientUser has been developed to provide the network administrator a “locked down” user environment which has no rights to install, create, modify, or delete. ThinClientUser is also unable to create shortcuts and is not allowed to run the “right click” context menu. To make any changes such as add third party applications you must log on as the administrator.

ThinClientUser is easy to bypass, simply hold down the shift key with one hand and log out using the mouse from the start menu. Do not release the shift key until the logoff process has finished and you are presented with the choice to log on as either the Administrator or ThinClientUser.

Depending on your keyboard’s keystroke rate, you may find that the logoff process cycles back and logs in the ThinClientUser in again. If this happens repeat the previous step keeping the left shift held down and immediately after you select log off repeatedly press the right shift key while the logoff process is running. You may notice the Windows *sticky keys* notice appearing, if so click No to close and

continue.

You may now log in as: Username = administrator Password = admin



Install your software as needed making sure you have specified any permissions required for the "locked down" ThinClientUser to run that application. Shortcuts will need to be placed in the Public Desktop folder for the ThinClientUser to utilize the installed software. If you reboot the thin client, ThinClientUser will be automatically logged back in.

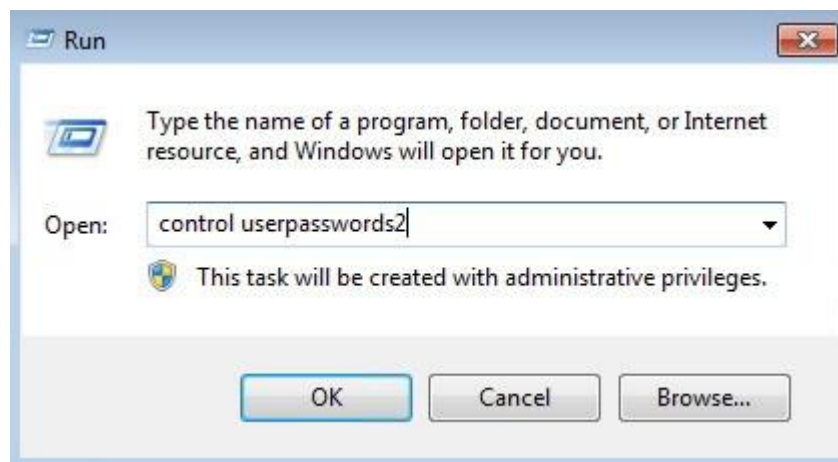
NOTE: To add third party applications always make certain Write Protection is Disabled prior to installing application. Once the application has been installed and is working properly you may Enable Write Protection once again.

Change auto login options

NOTE: Once you join a server to a domain, Windows will automatically delete the **AutoAdminLogon** value from the **HKLM\SOFTWARE\Microsoft\Windows NT\CurrentVersion\Winlogon** registry key. This causes the userpasswords2 control to hide the "Users must enter a user name and password to use this computer" check box.

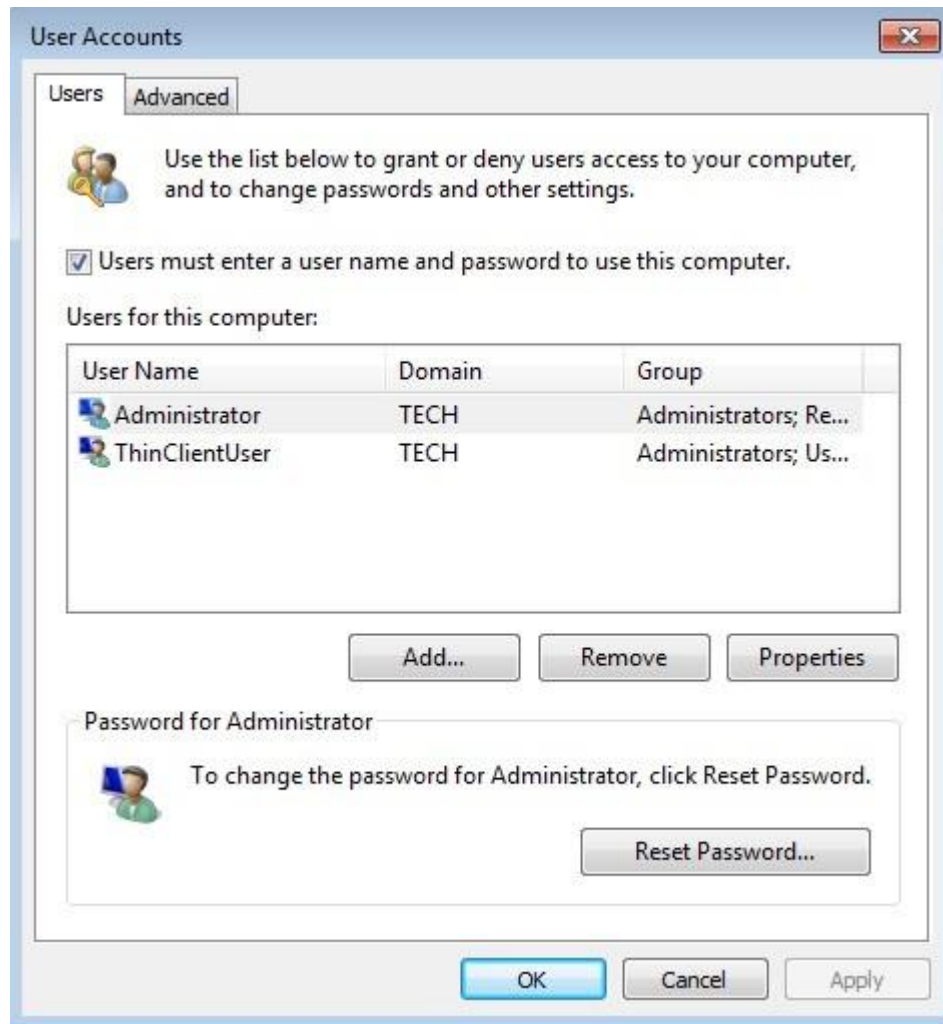
Select Start - Run and type control userpasswords2 - select OK

Or you can type NETPLWIZ and select OK, both programs will work.



Auto Log On

Check the “Users must enter a user name and password to use this computer” then select Apply.



Uncheck the “Users must enter a user name and password to use this computer” then Select Apply.

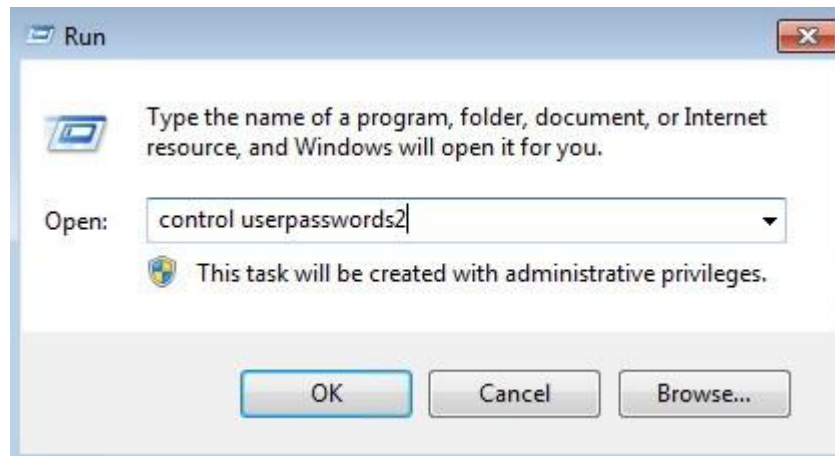
The Automatically Log On box is presented. Enter the user name and password of the account to auto log on. Select OK.



Disable Auto Log On

To disable the auto log on just once again check the “Users must enter a user name and password to use this computer”.

Force Users to press CTRL+ALT+DEL to Log On

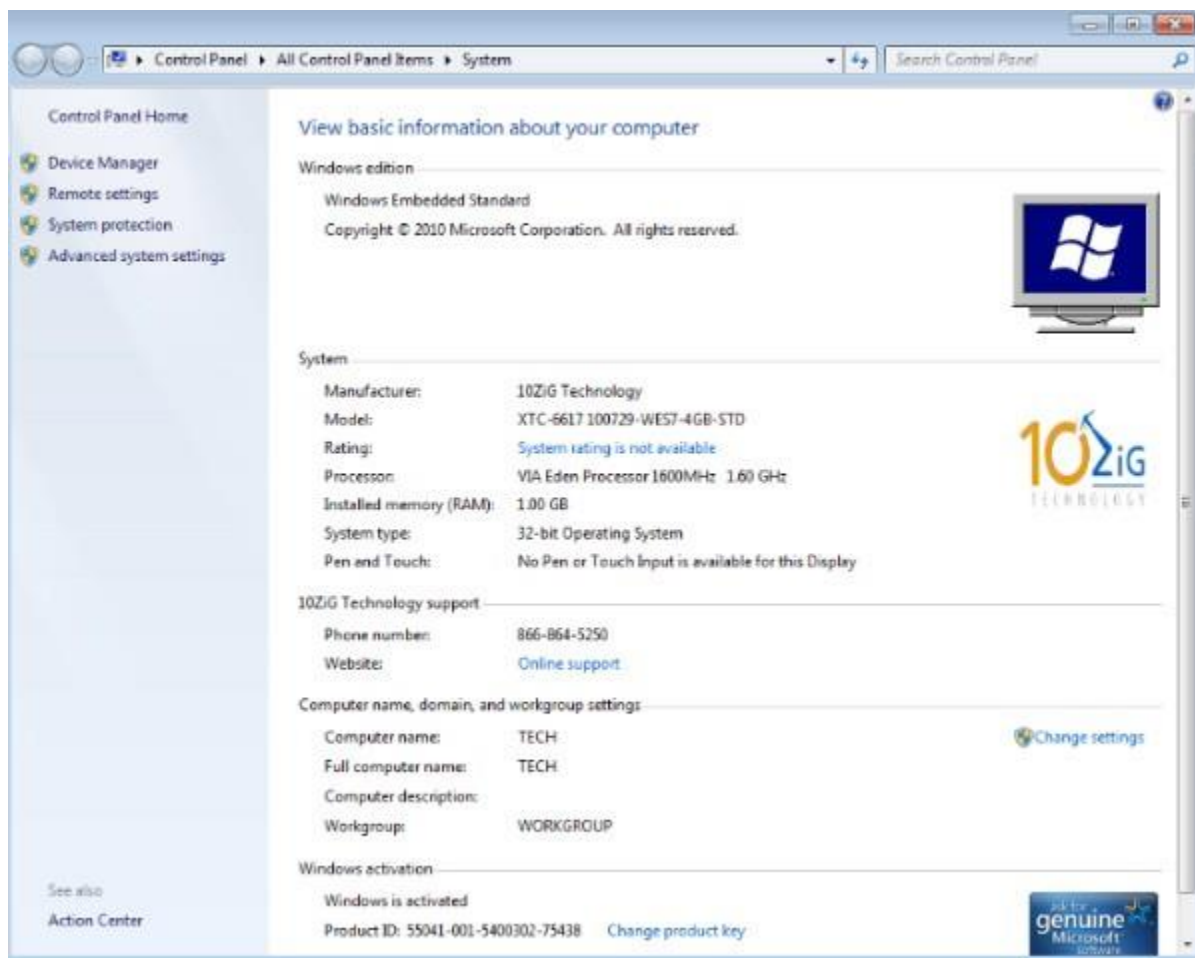


Go to the Advanced Tab and check "Require users to press Ctrl+Alt+Delete" and select Apply or OK.



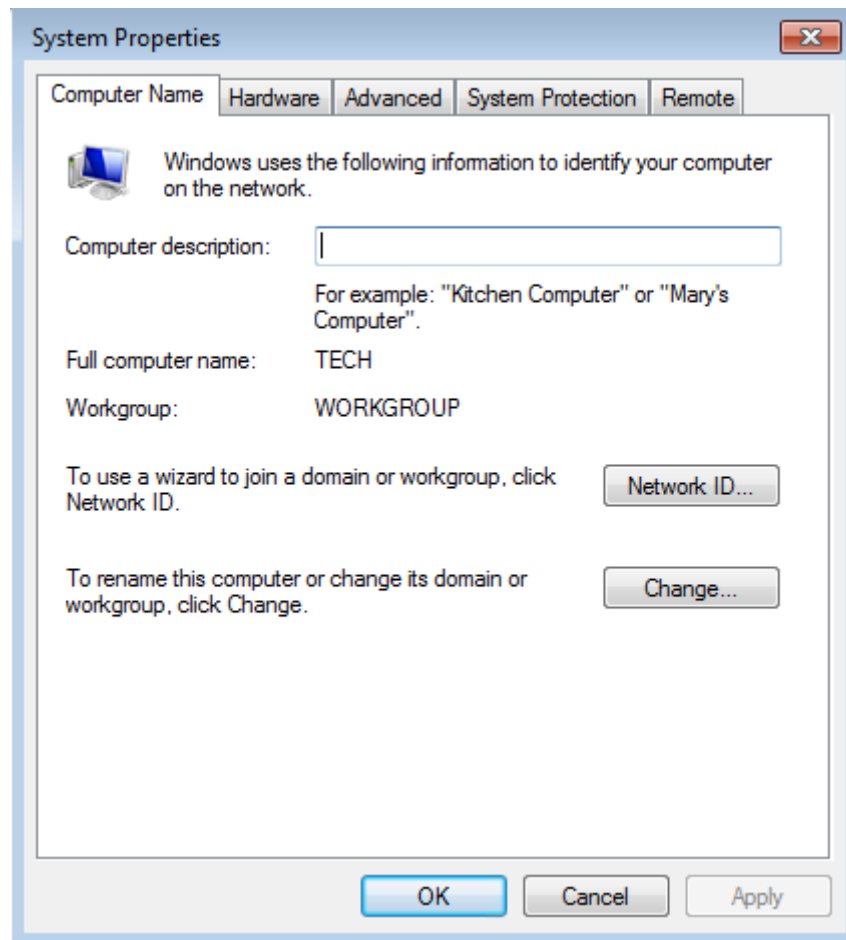
Joining the thin client to a domain

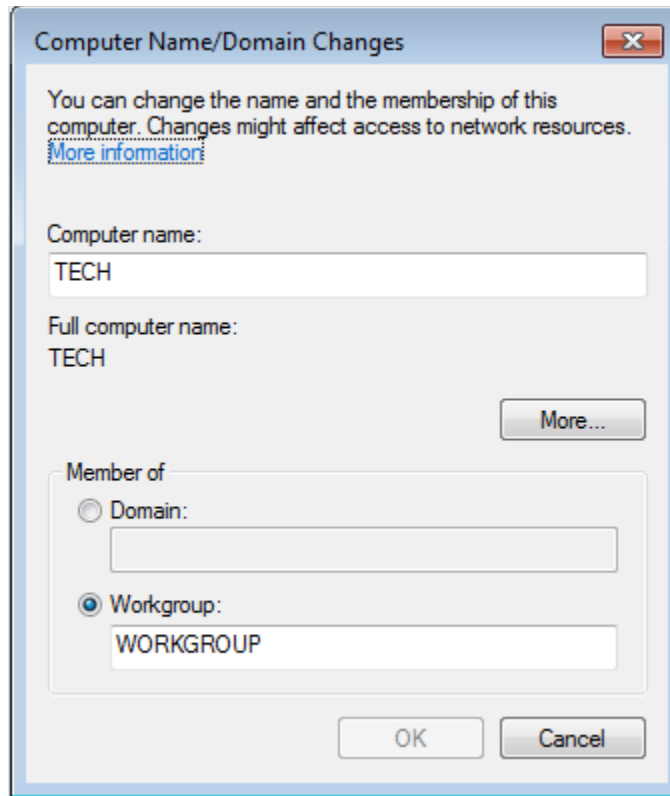
Right click on my computer and select **Properties**



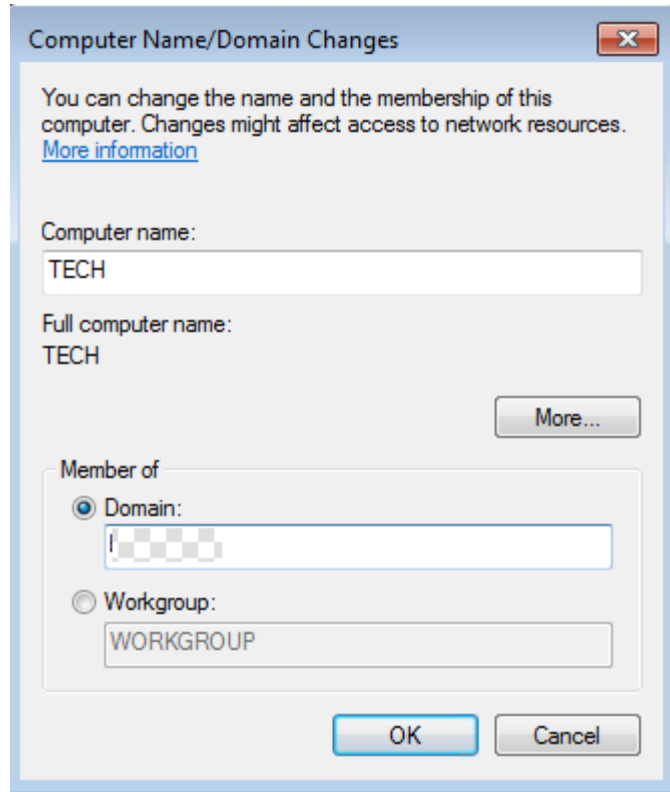
Select Change Settings

Select Change

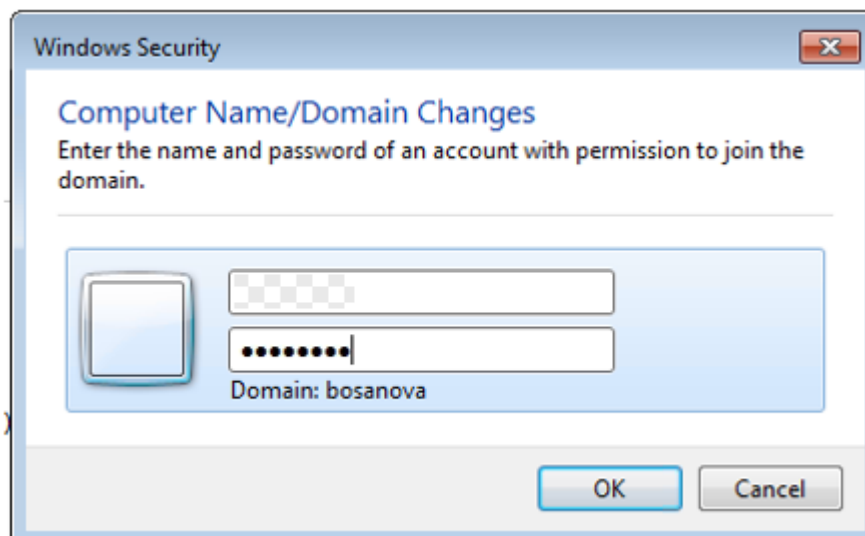


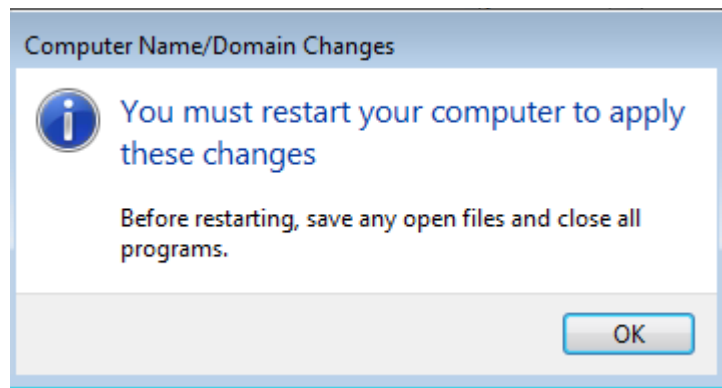
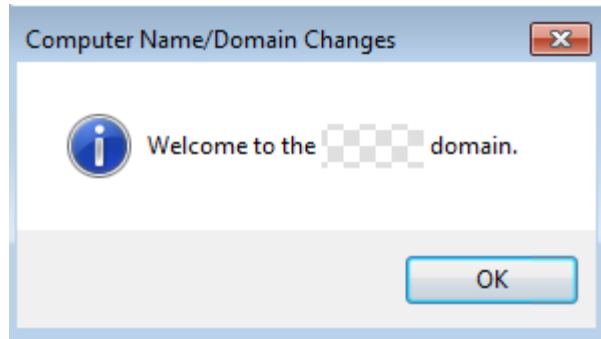


Click on Member of Domain and complete the domain name. You may change the Computer name at the same time if you desire.



Log in with a user account that has permission to join the domain.





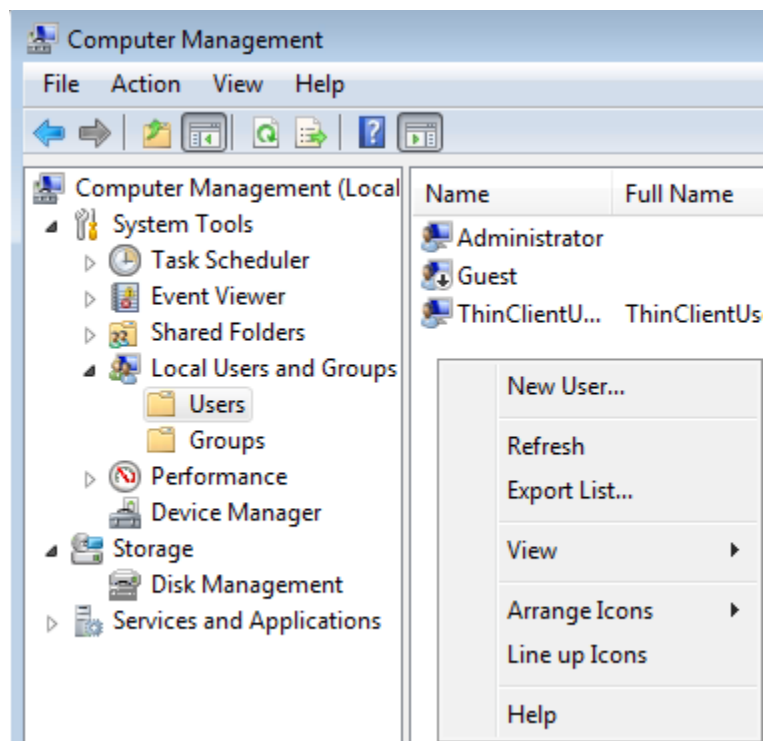
NOTE: Commit changes prior to rebooting or your changes will be lost.

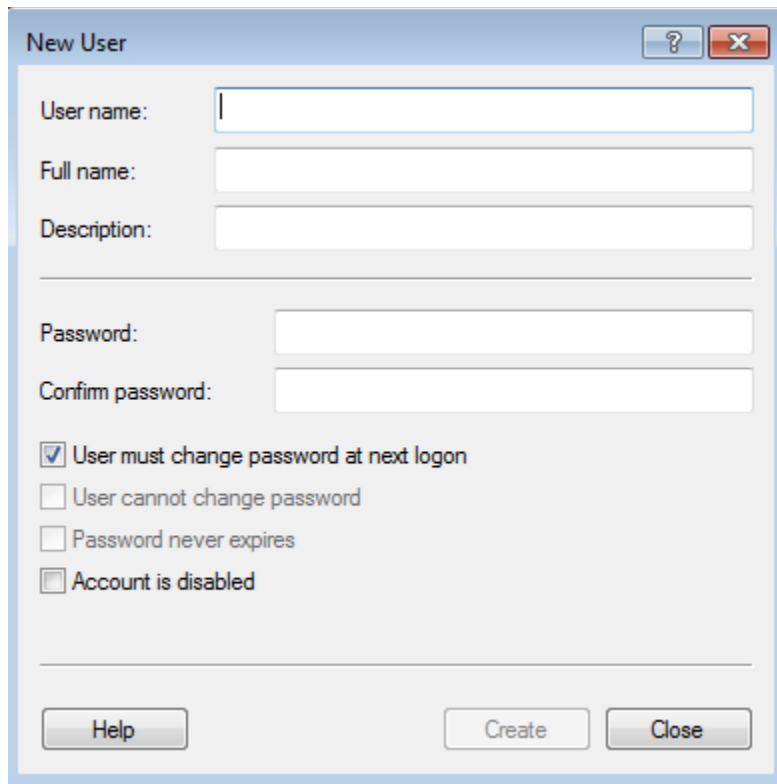
Add Users

Add a local user

Right click on My Computer and select Manage

Select the Users folder - right click and select New User

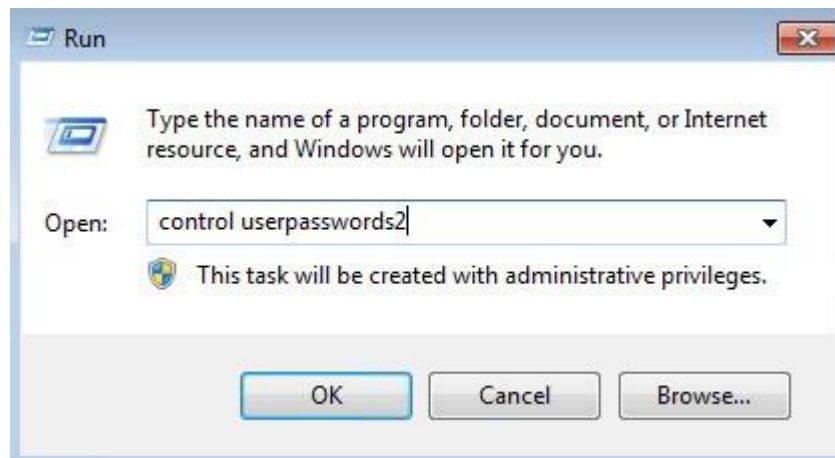


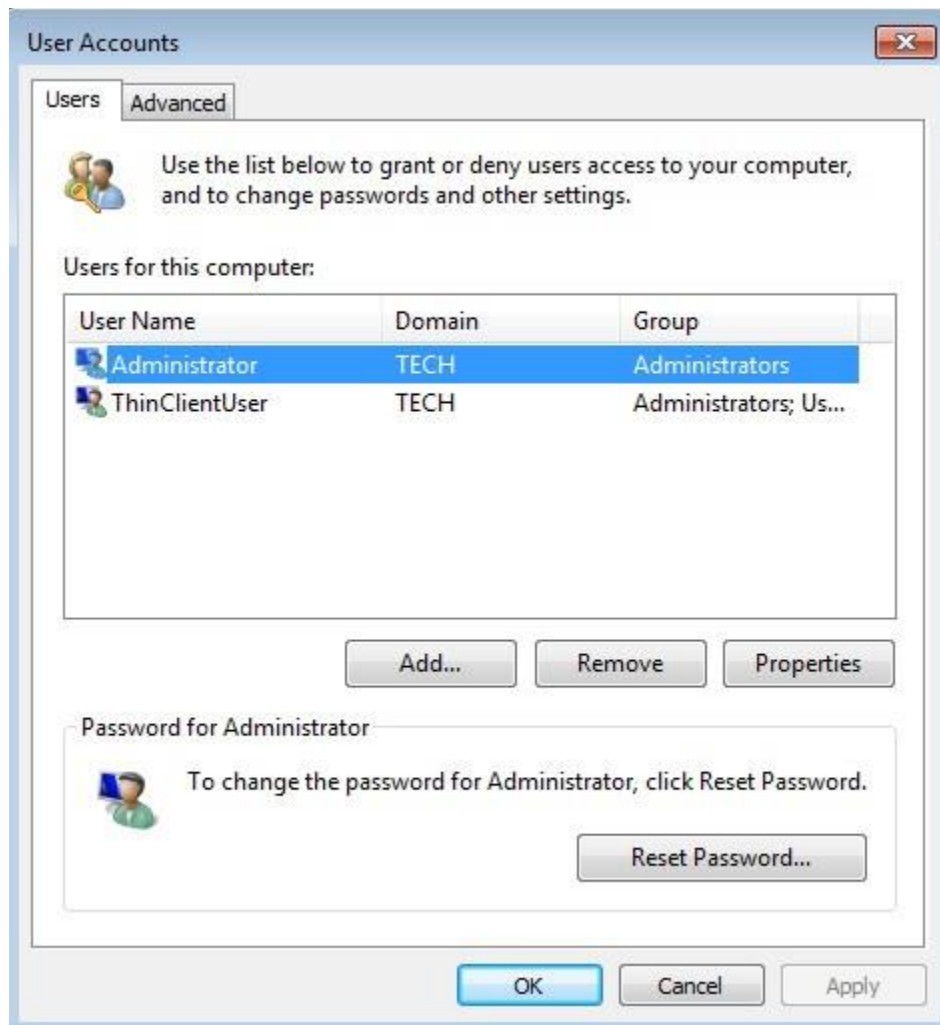


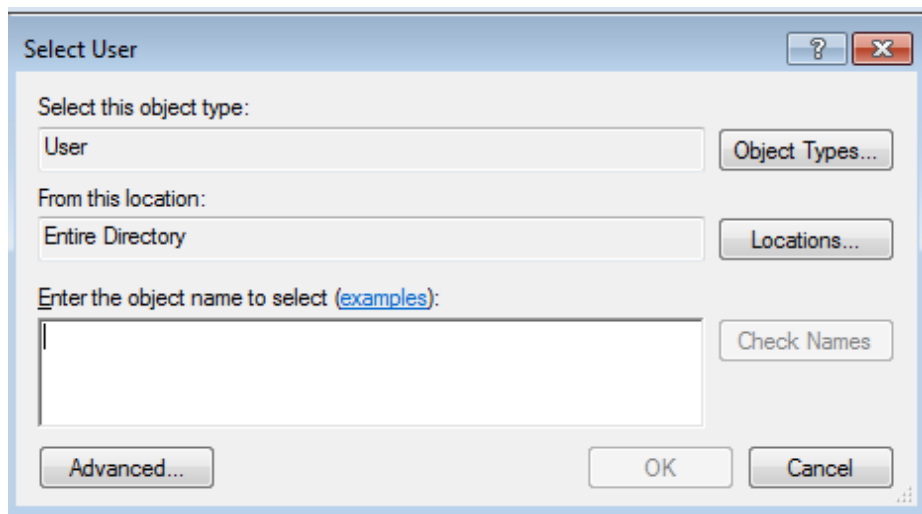
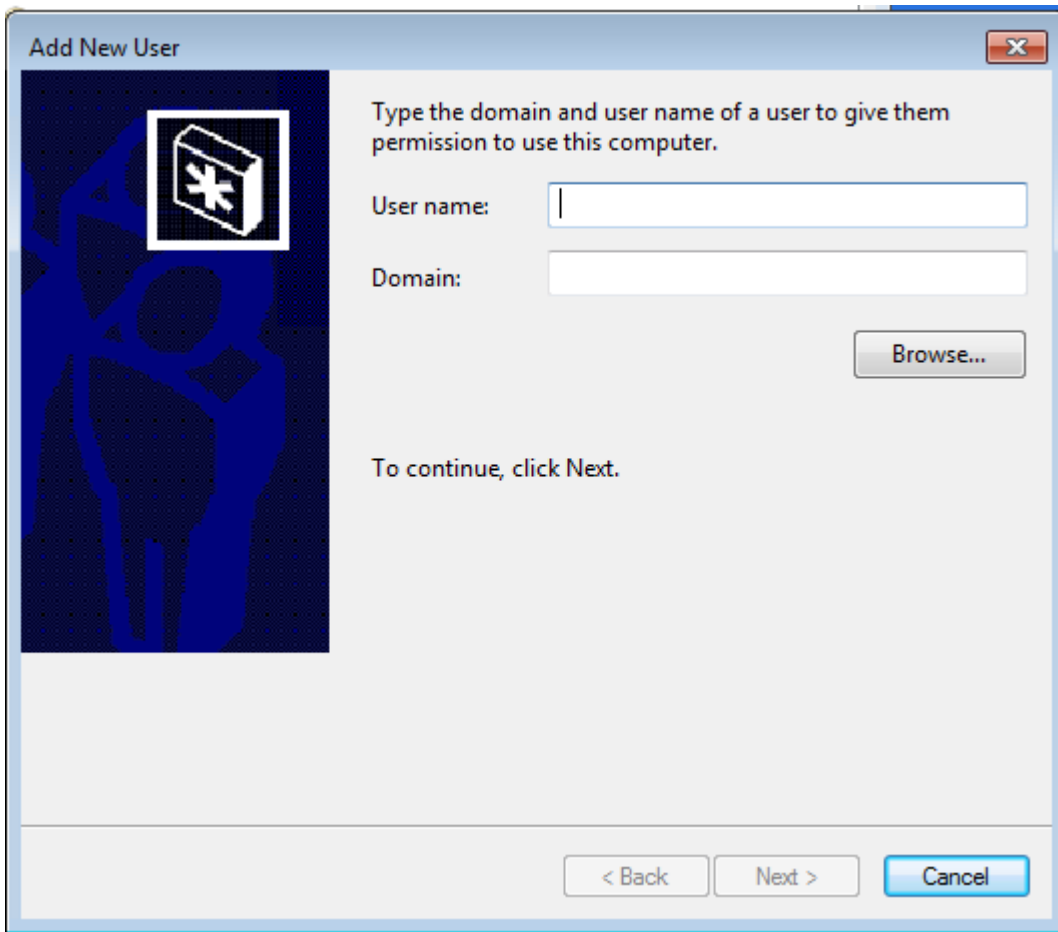
To add a user to a group select Groups - double click on the group and add the user.

Add a domain user

The thin client must be added to the domain first. Go to Start - Run

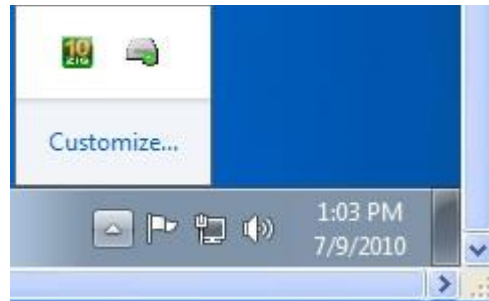




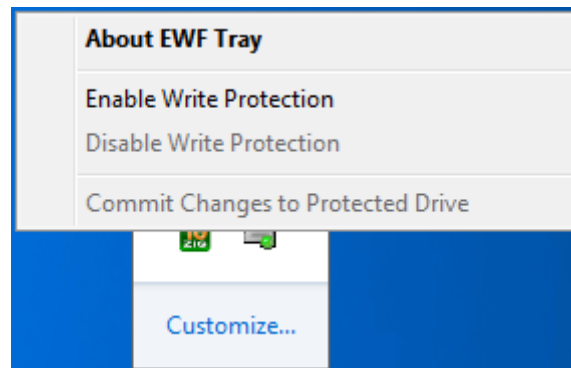


NOTE: If Write Protection is on make certain you COMMIT changes or they will be lost.

Click on the arrow in the right hand corner of the display



Right click on the Disk ICON with the green dot.



Select **Enable Write Protection**.

Reboot thin client.

Write Protection (EWF) Options

If **Enable Write Protection** is grayed out, write protection is disabled and everything is being written to disk.

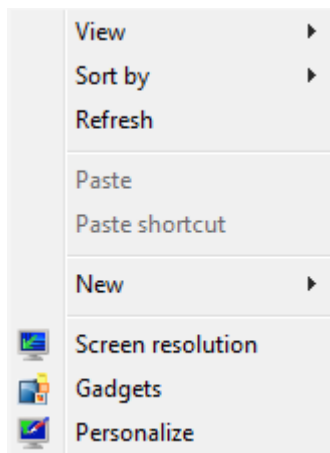
If **Disable Write Protection** is grayed out, write protection is enabled and all changes to the image must be committed to write them to disk.

When Write Protection is enabled, select **Commit Changes to Protected Drive** to write the changes to disk.

After making changes you may be prompted to reboot.

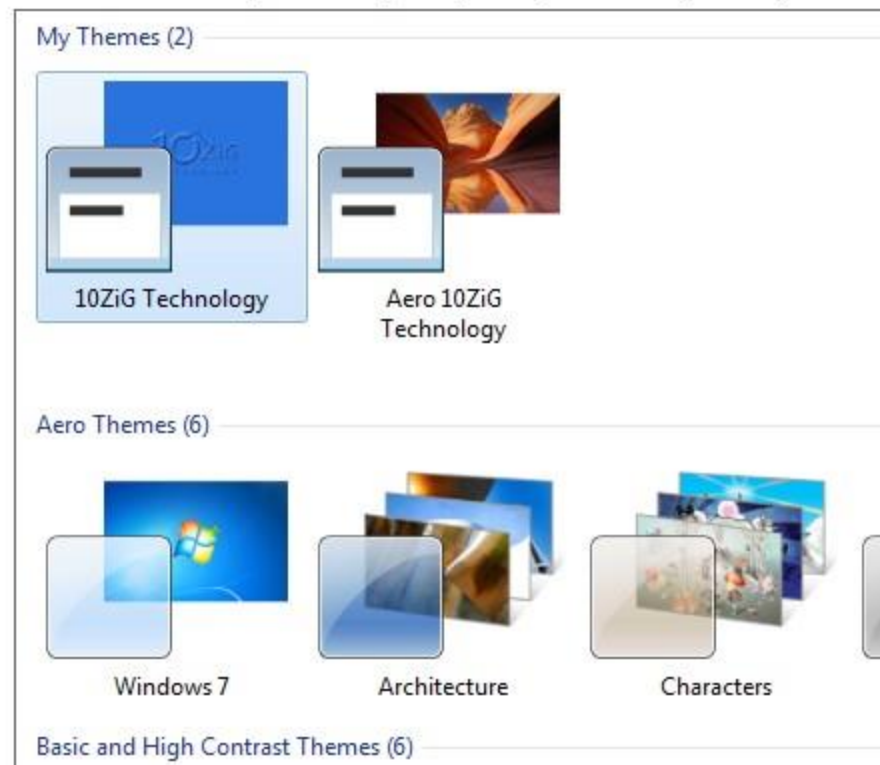
NOTE: Windows Aero is the graphical user interface and the default theme in most Editions of Windows Vista and Windows 7 operating systems released by Microsoft. This user interface is very resource intensive. In the case of virtual memory errors, to reduce the use of resources, change the desktop theme to the **10ZiG Technology** theme which does not use Windows Aero. Right click on the desktop and go to personalize - set the theme to **10ZiG Technology**.

NOTE: On some thin clients, if using dual monitors (VGA and DVI) you will need to change the desktop theme to a non-Aero theme or the monitors will flash on and off.



Change the visuals and sounds on your computer

Click a theme to change the desktop background, window color, sounds, and screen



Remember to **commit changes** if Write Protection is Enabled.

10ZiG Technology Limited

www.10zig.com

Headquarters US

23309 N 17th Dr - ■ 100
Phoenix, AZ 85027
Phone 866-864-5250 • Fax 623-516-8697
support@10zig.com
sales@10zig.com

Headquarters UK

10 ZiG Technology Limited
Unit S2, Troon Way Business Center
Humberstone Lane
Leicester LE4 9HA
Phone 44 1509 276252 • Fax 44 1509276253
support@10zig.eu
sales@10zig.eu

June 24, 2015