

Windows 10 IoT QSG – Edited Draft

Initial Setup and Configuration

By default, when you first boot up your new Windows 10 IoT 10ZiG Thin Client, you are automatically logged in as “Administrator”. While logged in as Administrator, you will be able to set up, install and configure the Thin Client for use with any “locked down” users you may wish to create.

Administrator's password: **admin**

“ThinClientUser” Login

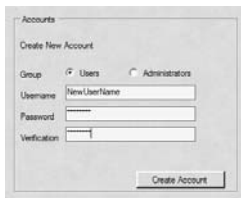
“ThinClientUser” has been developed to provide the network administrator with a “locked down” user environment which has no rights to install, create, modify or delete. ThinClientUser is also unable to create shortcuts and is not allowed to run the “right click” context menu.

ThinClientUser's password: **ThinClientUser**

10ZiG Quick Start Wizard

When the Thin Client first logs in under administrator, you will be prompted with the 10ZiG Quick Start Wizard. The 10ZiG Wizard is here to make your customized setup and configuration a breeze. Simply follow the step-by-step instructions and be sure to note the Connections, User Accounts/Domain and Personalization tabs on the following screens.

1. User Accounts (*under User Accounts/Domain tab*) - It is easy to setup a new account with the user or administrative privileges using the 10ZiG Quick Start Wizard. Simply select from the radio button whether the user should have user or administrative rights and type username and password as shown below:



The screenshot shows a dialog box titled "Accounts" with a sub-tab "Create New Account". There are two radio buttons under "Group": "Users" (selected) and "Administrators". Below are input fields for "Username" (containing "NewUserName"), "Password", and "Verification". A "Create Account" button is at the bottom right.

Click the Create Account button when finished entering the data.

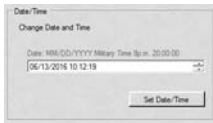
2. Domain Join (*under User Accounts/Domain tab*) – Domain join and/or change hostname is a snap. Select the appropriate radio button on whether it is a domain join with name change or just a name change. If applicable enter the domain name, hostname, username and password (must have rights to join the domain) as shown below:



The screenshot shows a dialog box titled "Domain/Hostname". There are two radio buttons: "Join Domain and Change Hostname" (selected) and "Change Hostname". Below are input fields for "Domain" (containing "DomainName"), "Hostname" (containing "ComputerName"), "Username" (containing "UserName"), "Password", and "Verification". A "Join/Change" button is at the bottom right.

Click the Join/Change button when finished entering the data.

3. Set up the Date & Time (*under Personalization tab*) – To change the date and time simply tab through the field and enter the date as shown below:



Click the Set Date/Time button.

4. Enable/Disable the Unified Write Filter (UWF) (*under Personalization tab*) – By default the Unified Write Filter is off. To turn it on/off is quite easy. (Please do not turn it on until you are finished configuring your thin client). Please see document UWF Suggested Exclusions for extensive detail on UWF and setup. It can be downloaded here:

<http://faq.10zigsupport.com/downloads/UWF%20Exclusions%20X86%20X64.pdf>

Select the appropriate radio button for the desired action. See below:



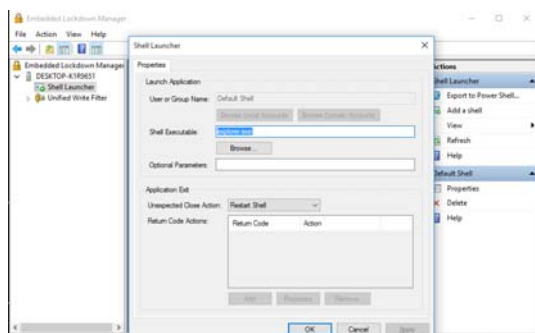
Click Change Write Filter. It will require a reboot to enable and the image will be protected from any changes.

Embedded Lockdown Manager

Windows IoT comes with the Embedded Lockdown Manager. ELM is a snap-in to the Microsoft Management Console (MMC). You can use ELM directly on a Windows IoT device for shell launcher only or you can use ELM on a development computer and then remotely connect to the thin client device. ELM automatically detects which lockdown features are installed on the device, and displays configuration options for only those features. ELM uses Windows Management Instrumentation (WMI) to detect and change configuration settings. Watch our video of ELM in action here:

https://www.youtube.com/watch?v=fpC-K3_3QI


You can Shell Launcher to replace the default Windows IoT shell with a custom shell. You can use any application or executable as your custom shell, such as a command window or a custom dedicated application. You can also configure Shell Launcher to launch different shell applications for different users or user groups. Here is the look and feel of the ELM.



For additional information on ELM use the url below.

<http://faq.10zigsupport.com/downloads/EmbeddedLockdownManager-MSTSCautostart.pdf>

Removing Automated Logon Feature

By default the 10ZiG thin client is configured to auto logon as Administrator. That can be easily changed or removed by using the 10ZiG Quick Start Wizard. If you have exited the wizard you can start it up again by clicking on this icon  on the administrator desktop. Once the wizard is on the desktop click on the User Accounts/Domain tab. Choose the appropriate radio button to remove/change auto logon. Snapshot below is removing auto logon feature, note to change different data is required.




How to Set a Static IP Address:

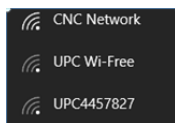
1. Click on Control Panel, Network and Sharing Center, Change Adapter Settings.
2. Right-click Local Area Connection and Select Properties.
3. Select Internet Protocol Version 4 and Click Properties.
4. Enter the static IP address, the Subnet mask, the Default gateway and close the dialog box.
5. Click OK and OK again to close the Local Area Connection Properties box.

Tight VNC

The default password to connect to the Thin Client using the 10ZiG Manager is admin.

Wireless Setup

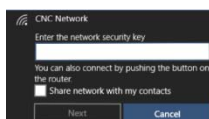
If your 10ZiG thin client came with a wireless network card, then click on the following icon . It will detect all the wireless networks that are in range to the thin client. Sample located below:



Locate the network you want to connect to and click on its name. If it is a network you know and you will connect to on a regular basis, you should select the option that says: *“Connect automatically”*. This way, whenever your device is in the networks range, it will automatically connect to it.



Once you click or tap *Connect*, Windows scans for the security settings of the network. Then, it will ask you for its security key.



Windows IoT offers an option called “*Share the network with my contacts*”. This is a feature called Wi-Fi Sense that allows you to share the networks you connect to with your contacts. Wi-Fi Sense shares the networks, but it does it in a secure way, as it does not disclose the credentials you or others use.

Once you have entered the password required by the network click next. If you want to check the accuracy of your password, you can see it before pressing “Next” by clicking the eye-like icon on its right side. When connected to the network the network name will display “Connected” to the right-side.

Third Party Software Install

You can install any additional third-party software that you may need to use on the thin client. Such items can include hardware or device drivers as well as any additional software that is required to run on the thin client device.

Write Filter

Windows IoT comes with the Unified Write filter installed on the 10ZiG thin client.

Unified Write Filter (UWF) is a sector-based write filter that you can use to protect your storage media. UWF intercepts all write attempts to a protected volume and redirects those write attempts to a virtual overlay. This improves the reliability and stability of your device. You can use Hibernate Once/Resume Many (HORM). UWF also contains a file and registry filtering system. You can add specific files or folders on a protected volume to a file exclusion list to exclude those files and folders from being filtered by UWF. When a file or folder is in the exclusion list for a volume, all writes to that file or folder bypass UWF filtering, and are written directly to the protected volume and persist after the device restarts.

You must use an administrator account to add or remove file or folder exclusions during runtime, and you must restart the device for new exclusions to take effect

To determine if UWF and the filter status is enabled/disabled bring up an admin command prompt and type:

```
uwfmgr get-config
```

For additional information how to add/remove file/registry exclusions

<http://faq.10zigsupport.com/downloads/UWF%20Exclusions%20X86%20X64.pdf>

For UWF Servicing on Windows Updates

<http://faq.10zigsupport.com/downloads/UWF%20Servicing.pdf>

Management Software

Free 10ZiG Manager Centralized Management Utility is available for download by visiting:

www.10zig.com/manager

Password: “Management” (password is case sensitive)

Warranty

Your new 10ZiG Thin Client devices come with a 3 year Advance Exchange Warranty. A 5 year Warranty may be purchased; please reach out to Tech Support or your Account Rep for more information.