

10ZiG Technology

Thin Desktop™ Quick Start Guide

Introduction

This document is intended as a quick start guide for installing Thin Desktop™. After reading this document, you will know how to:

- ∞ Install Thin Desktop™
- ∞ License Thin Desktop™
- ∞ Use and configure the Thin Desktop™
- ∞ Uninstall Thin Desktop™

Before reading this document, you should be familiar with installing an application bundled as a standard Windows Installer package under the embedded operating system.

Overview of Thin Desktop™

Thin Desktop™ is an easy to use application designed to configure a Windows based system to run a single application of choice.

Licensing requirements

Thin Desktop™ is licensed on a per client basis and is based on the computer name. License activation requires internet access to the host activation.thinlaunch.com.

Change Computer Name

The first step of importance is changing the computer name to the desired name prior to licensing (or installing) Thin Desktop™. Make certain Write Protection is disabled.

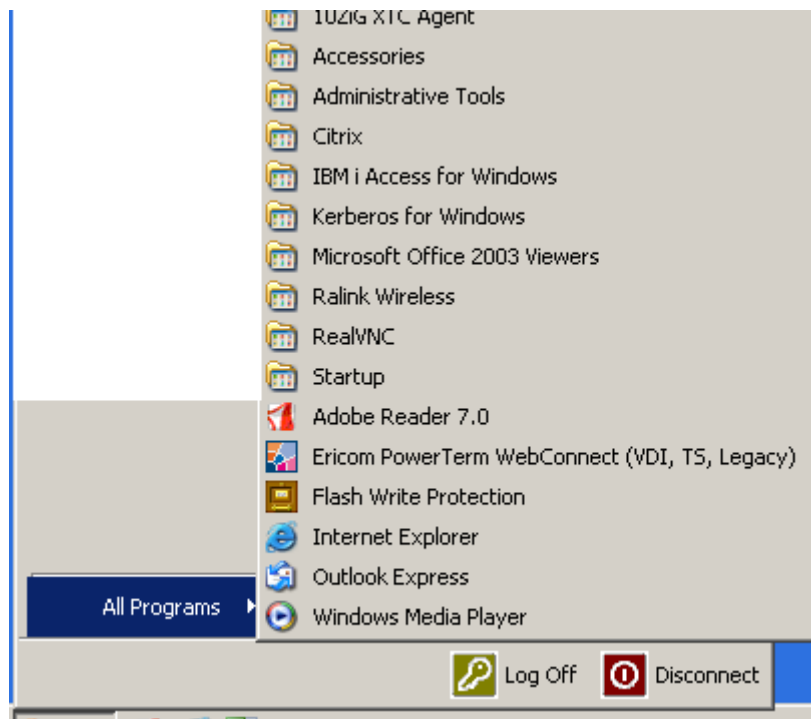
The XP embedded thin client is shipped with Write Protection enabled.

To disable:

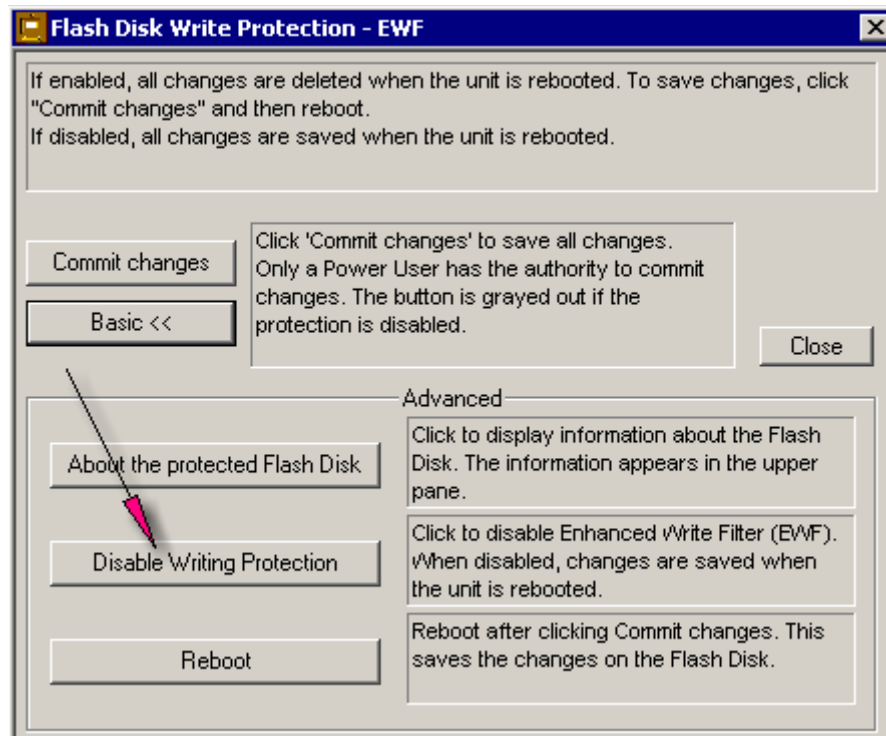
Double click on the Flash Disk Write Protection ICON on the Desktop



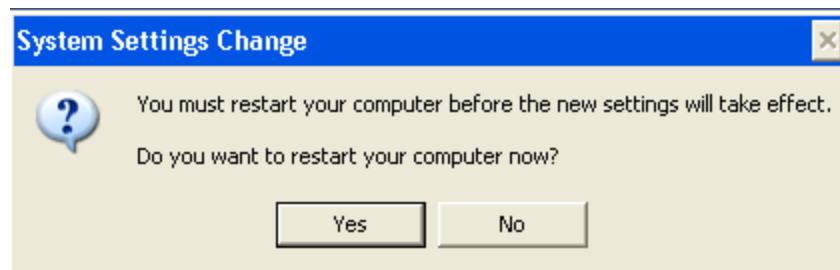
or go to Start - > Programs - > Flash Write Protection



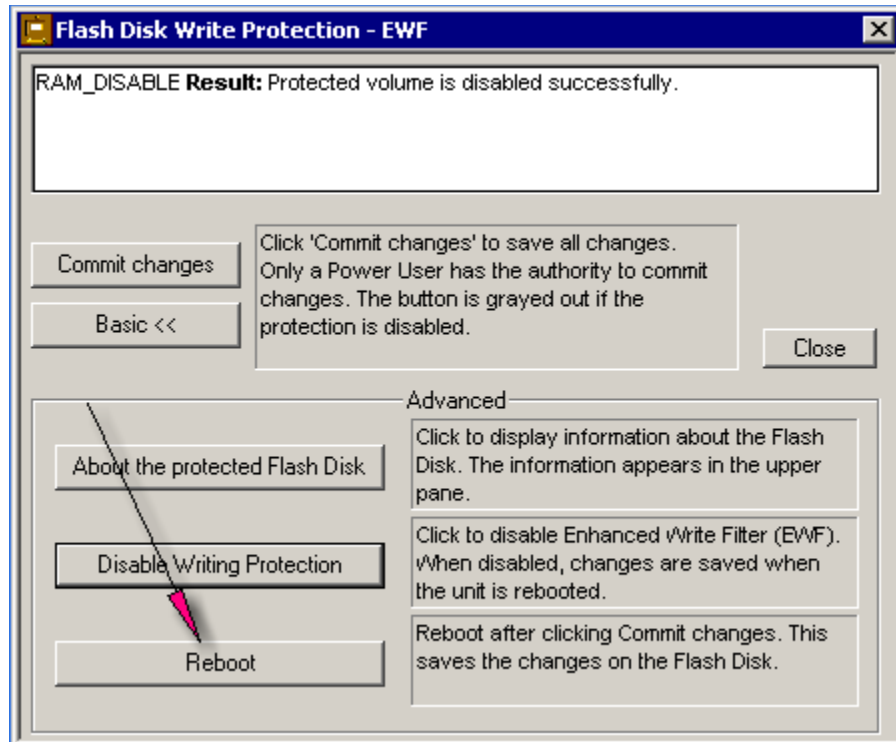
Click on Disable Writing Protection



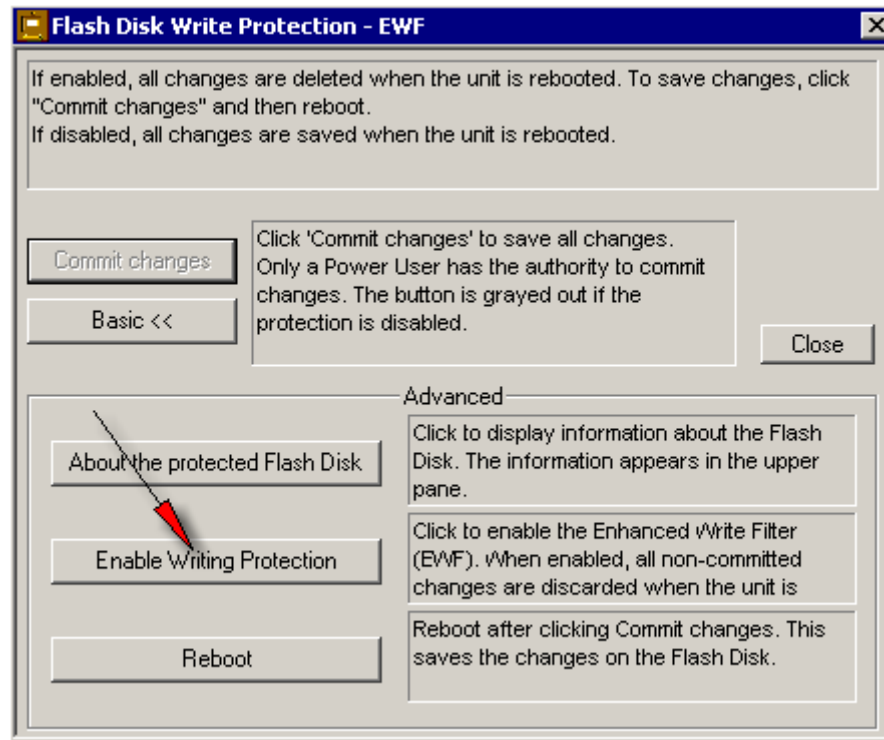
Select Yes on the restart option.



Select Reboot to reboot thin client and disable Writing Protection



NOTE: To enable Write Protection follow the previous procedures but select Enable Writing Protection.



To change the computer name right click on My Computer and select Properties.

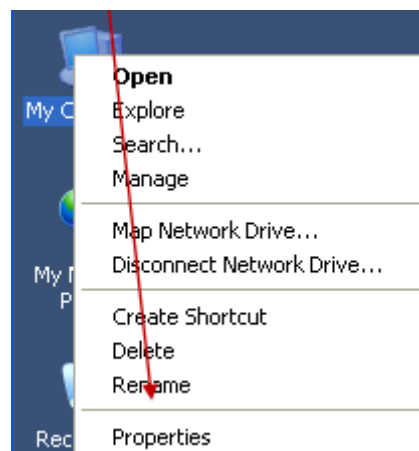


Figure 1 - My Computer Properties

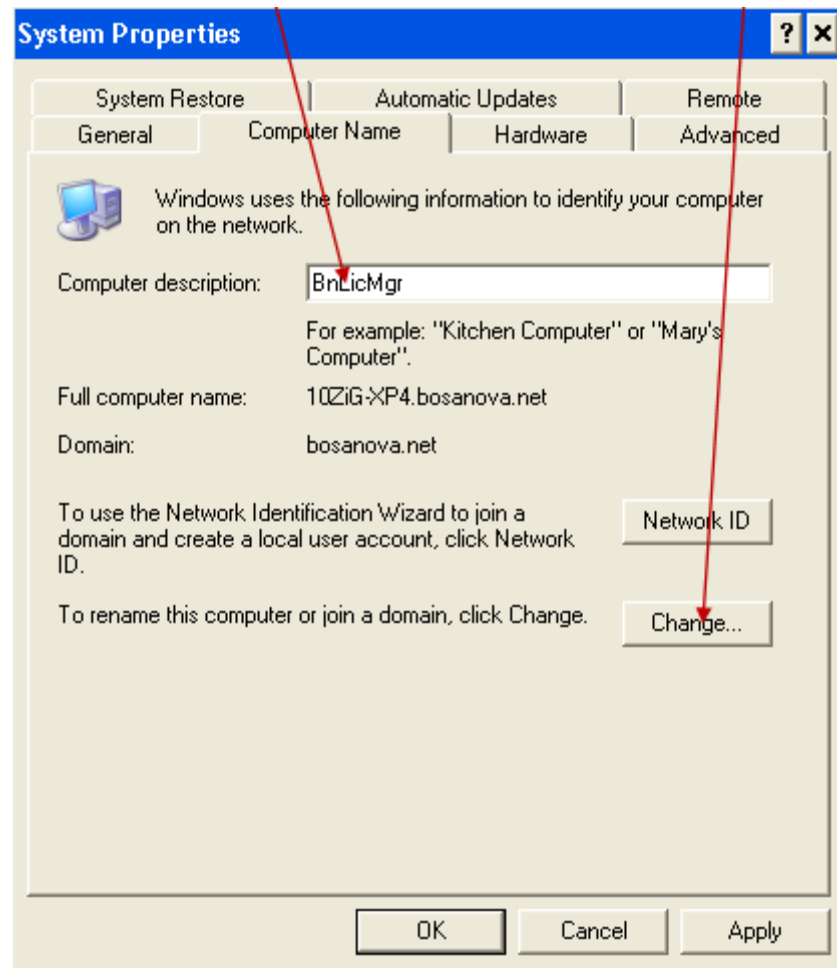


Figure 2 - Enter the Computer Description (if desired) and then select Change

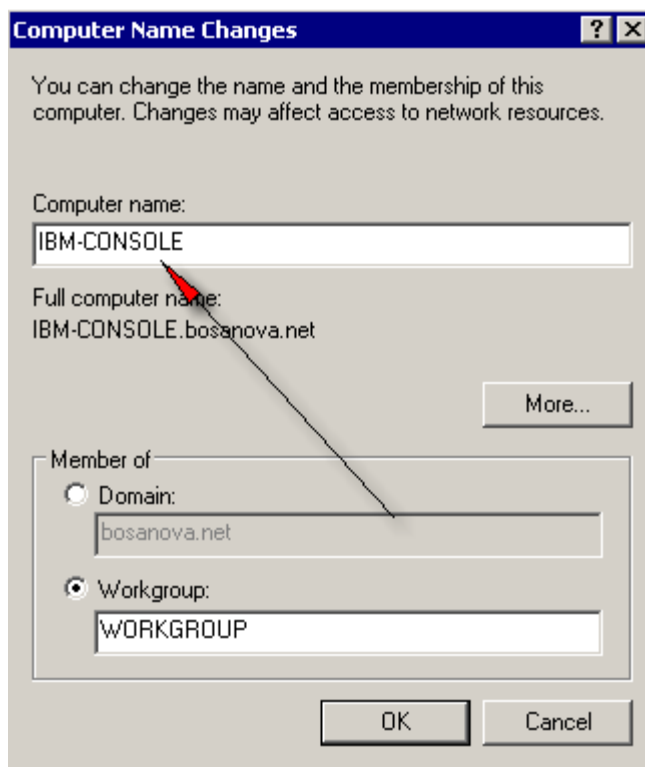


Figure 3 - Enter the desired Computer Name and select OK

NOTE: Currently Thin Desktop™ does not support membership to a domain.



Figure 4 - Enter credentials (administrative authority)

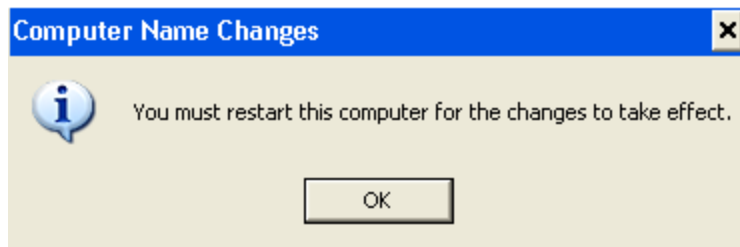


Figure 5 - Restart the computer

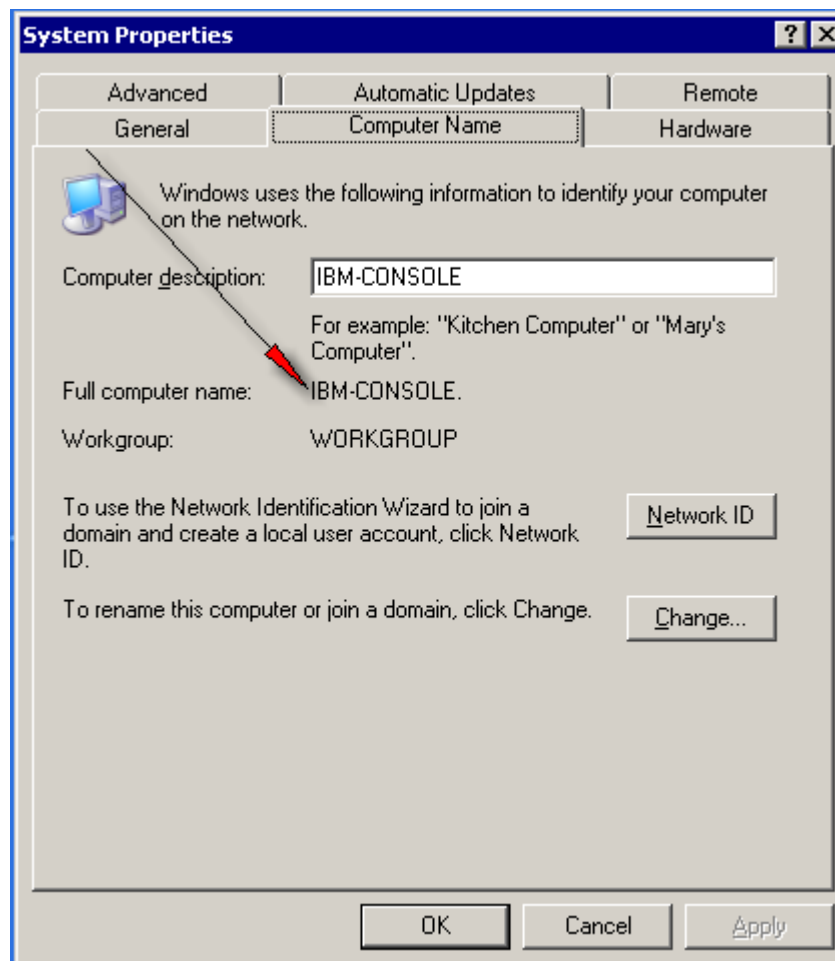


Figure 6 - Verify changed computer name prior to rebooting

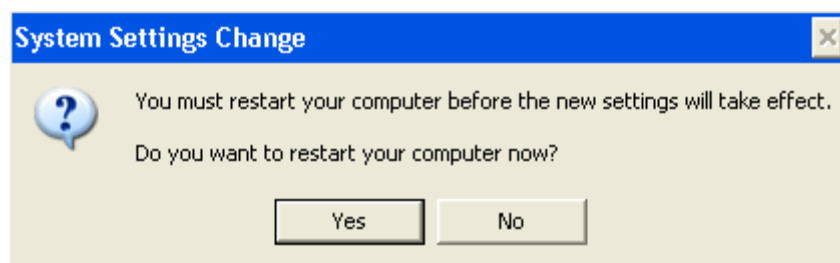


Figure 7 - Final prompt - answer YES and the thin client will reboot.

Proxy Server

If the technical environment of the device requires devices to connect to a proxy server to gain access to *the Internet*, the device must be configured with the proxy server address within Internet Explorer properties field prior to activating Thin Desktop™. If the technical environment of the device does not require connection to a proxy server, skip this section.

See the figures below on how to complete.

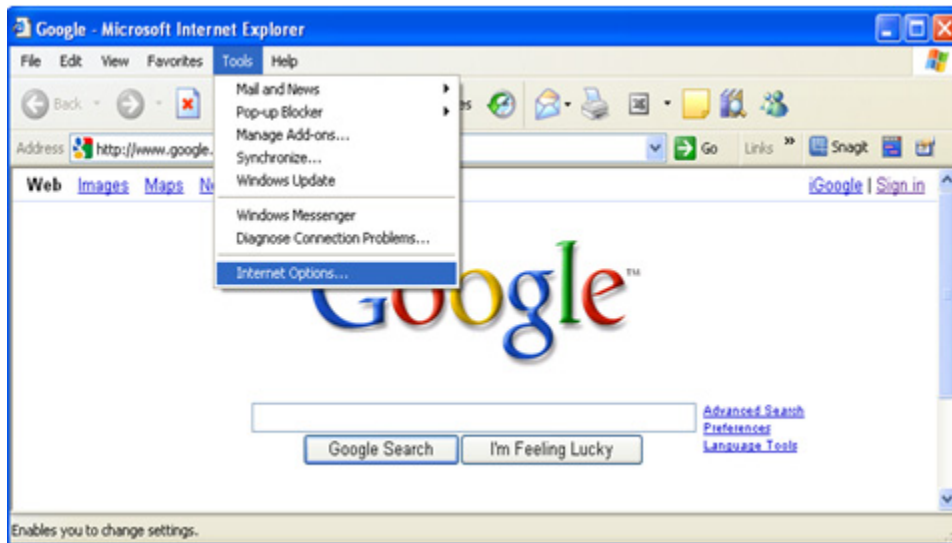


Figure 8 - Launch Internet Explorer and select Tools-Internet Options menu item

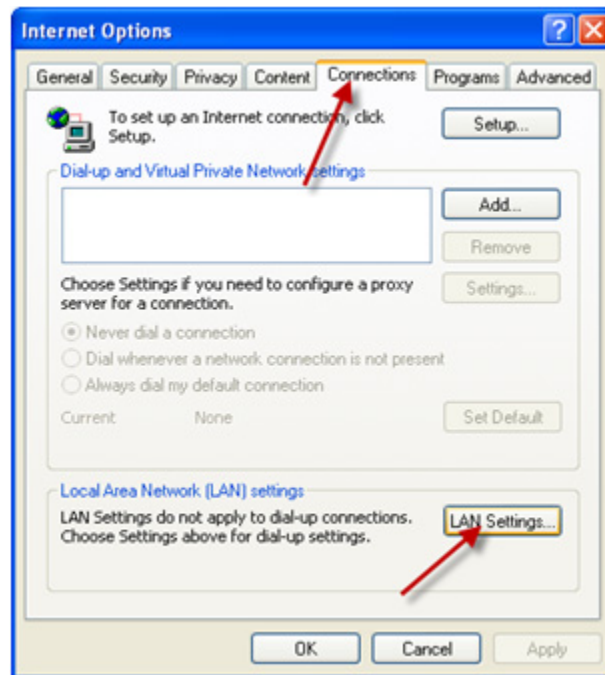


Figure 9 - Select the connections tab and select LAN Settings.

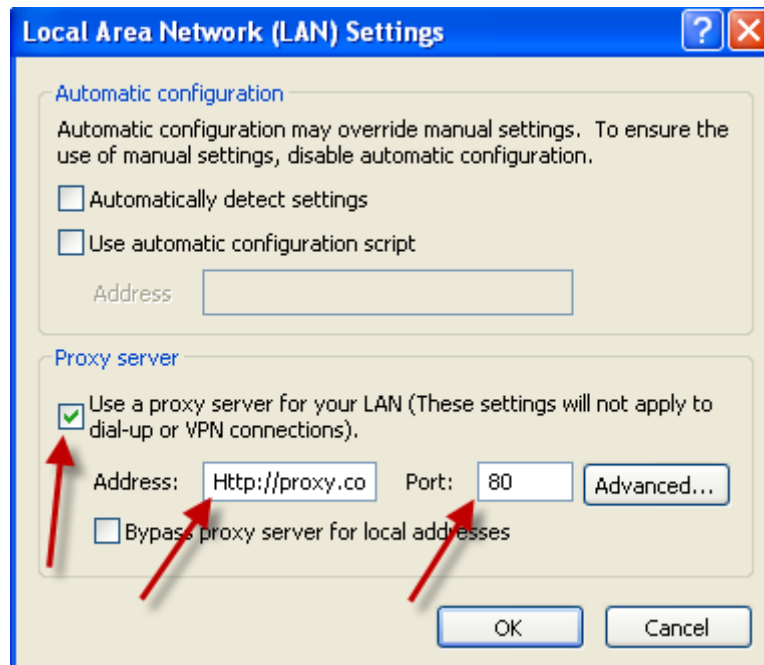


Figure - 10 Click on use a proxy server for your LAN, enter http address (i.e. http:// proxy.corp.internal), and enter port number.



Deployment and Installation of Thin Desktop™

System Requirements

Thin Desktop™ is supported on any system running Microsoft Windows XP Service Pack 2 or later, or Windows XP Embedded. The system cannot be a member of a domain as Thin Desktop™ currently does not support domain membership. Windows Installer is required for the install to complete successfully.

ThinDesktopUser Rights

A local user named ThinDesktopUser is created when Thin Desktop™ is installed. Prior to the first reboot after Thin Desktop™ has been installed, ThinDesktopUser is a member of the local administrators group. After the system is rebooted and Thin Desktop™ has run once after auto-login, ThinDesktopUser is removed from the local administrators group and remains a member of the local users group. ThinDesktopUser is configured with a randomly generated password unique to the device it is installed upon.

Pre-installation

Because the purpose of Thin Desktop™ is to configure your system to run a single application, that application must be installed and configured properly before Thin Desktop™ is installed. To accomplish this, please see the documentation of the application you wish to use. At the end of the Thin Desktop™ installation, you will enter or browse to the executable of this application.

Starting the Software Installation

To begin installation, locate the Thin Desktop™ MSI file distributed by ThinLaunch Software™. A simple wizard will guide you through the installation process. At the end of the installation, Thin Desktop™ will provide the user interface where the command of the application that will be launched and monitored by Thin Desktop™ can be entered by either browsing to the executable or directly entered. This is the application that will run instead of Windows Explorer during Windows startup. See the figures below on how to complete.

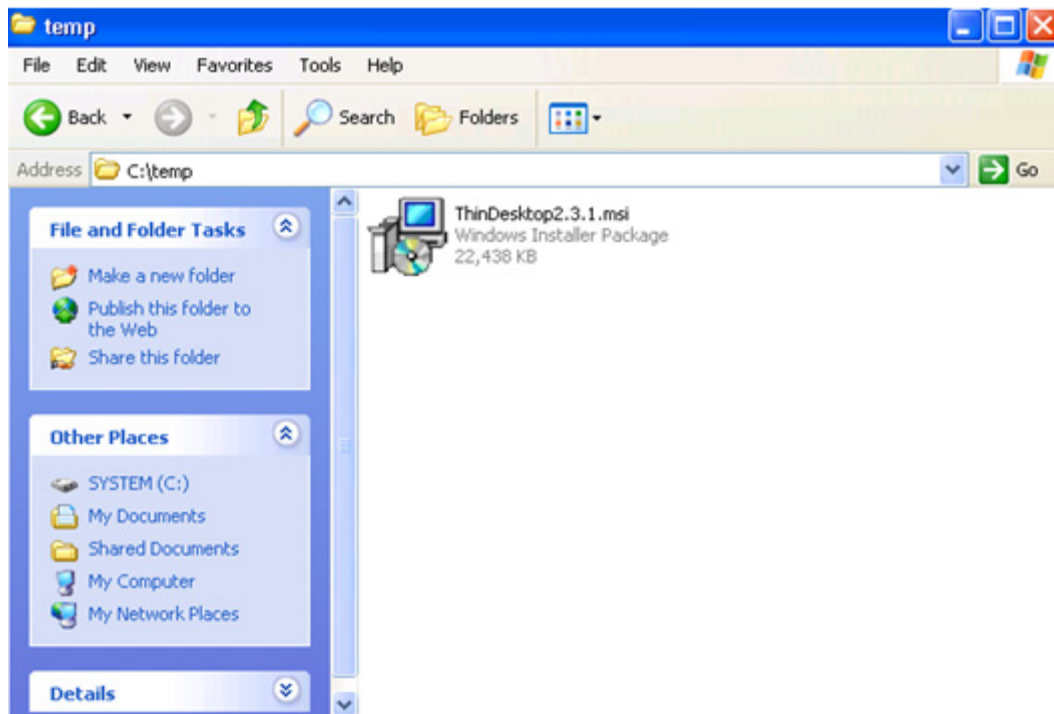


Figure 11 - Browse to the Thindesktopx.x.x MSI and double click.



Figure 12 - Click Next on the Welcome to the Thin Desktop Setup Wizard.

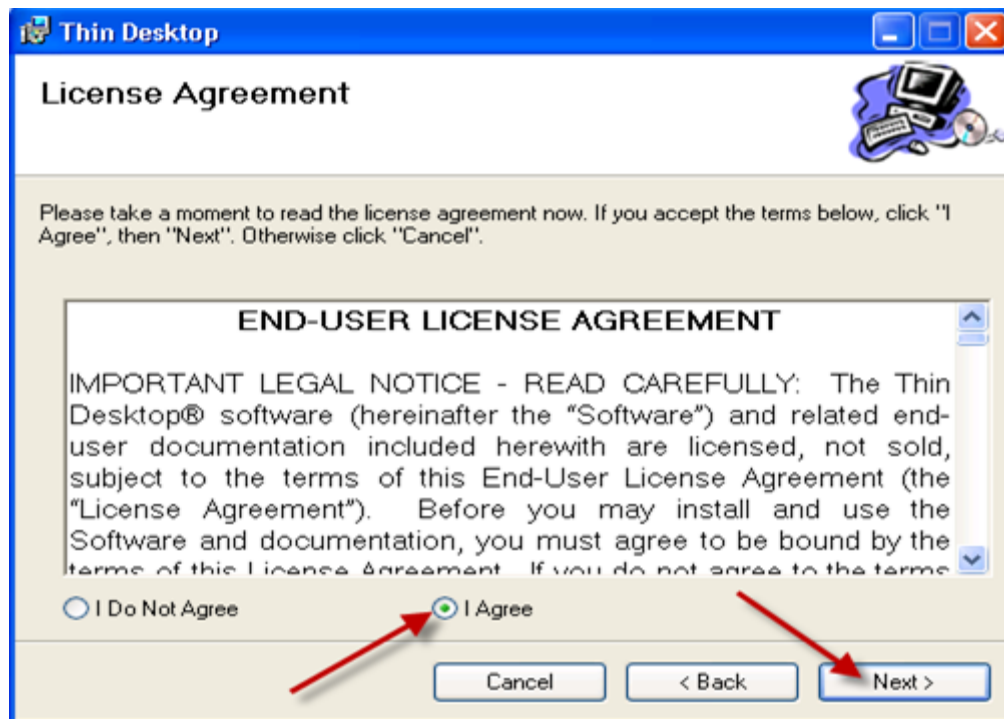


Figure 13 - After reading the END-USER LICENSE AGREEMENT, choose I Agree and click Next

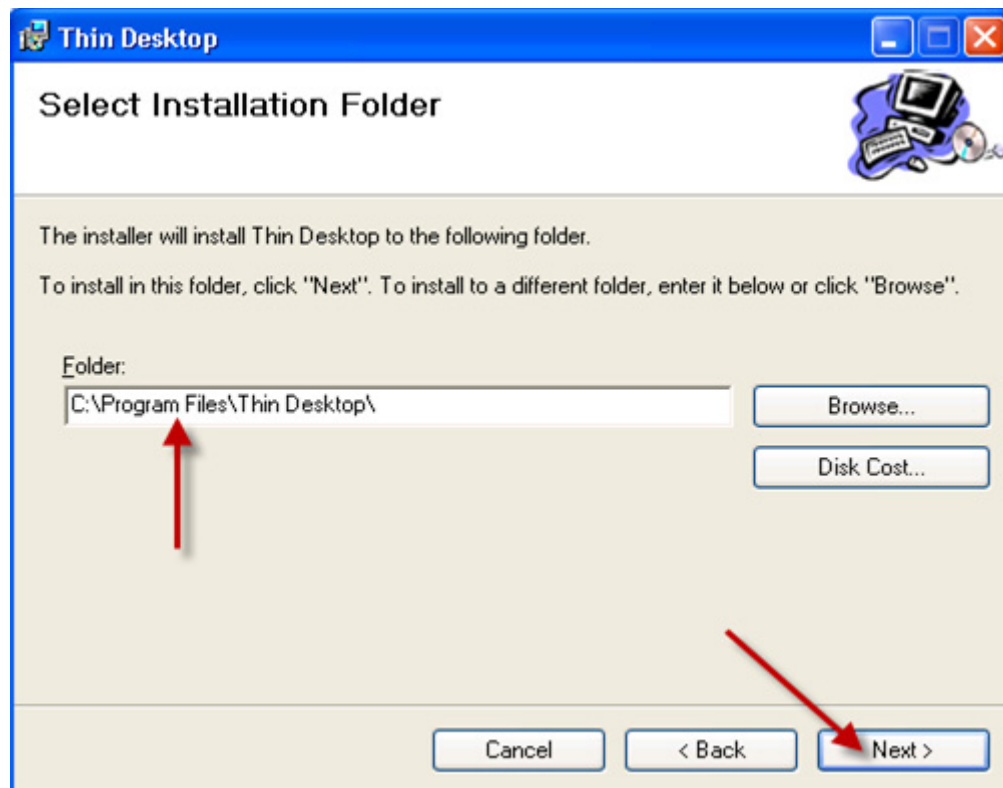


Figure 14 - Enter or browse to the folder location where Thin Desktop should be installed and click next.

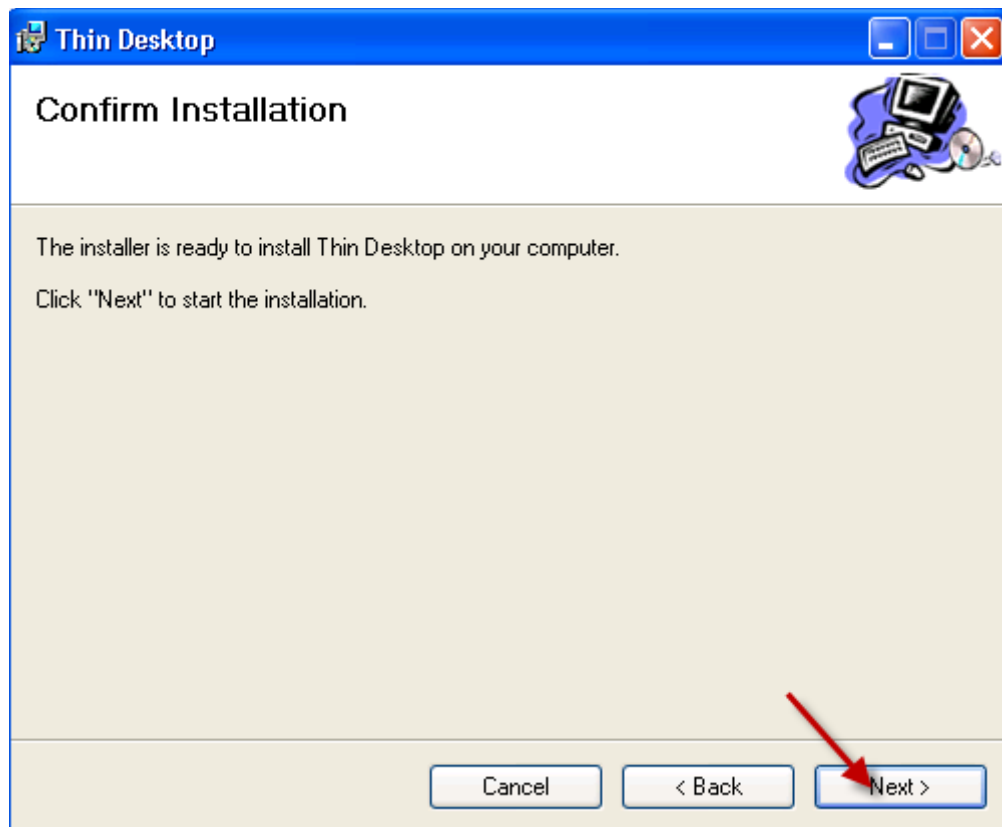


Figure 15 - Click next on the confirm installation window.

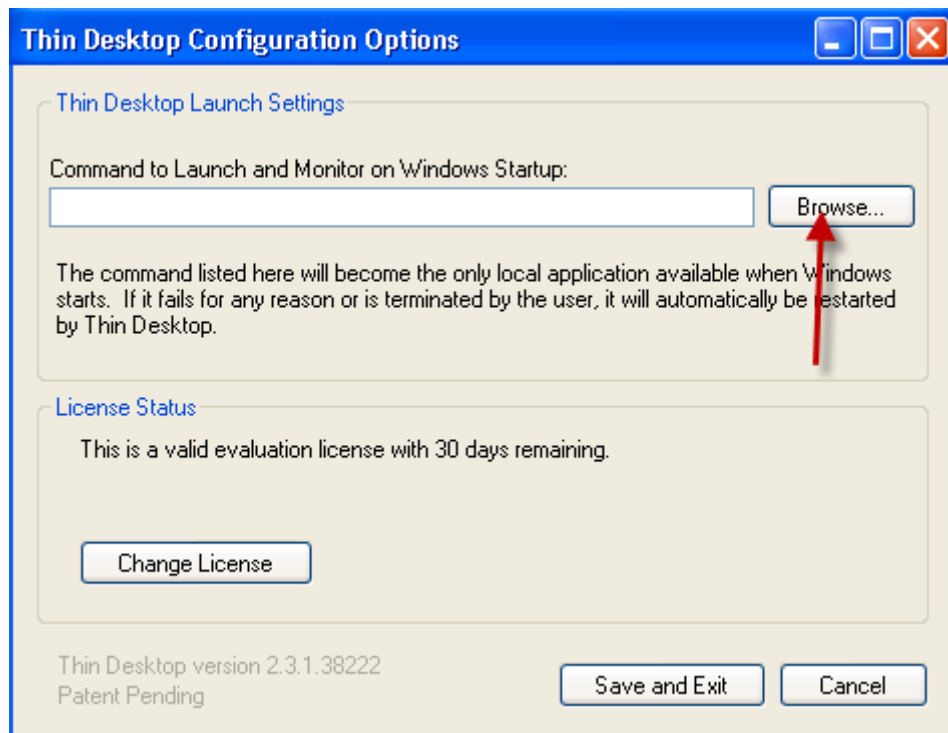


Figure 16 - Click Browse or directly enter the location of the program Thin Desktop will launch.

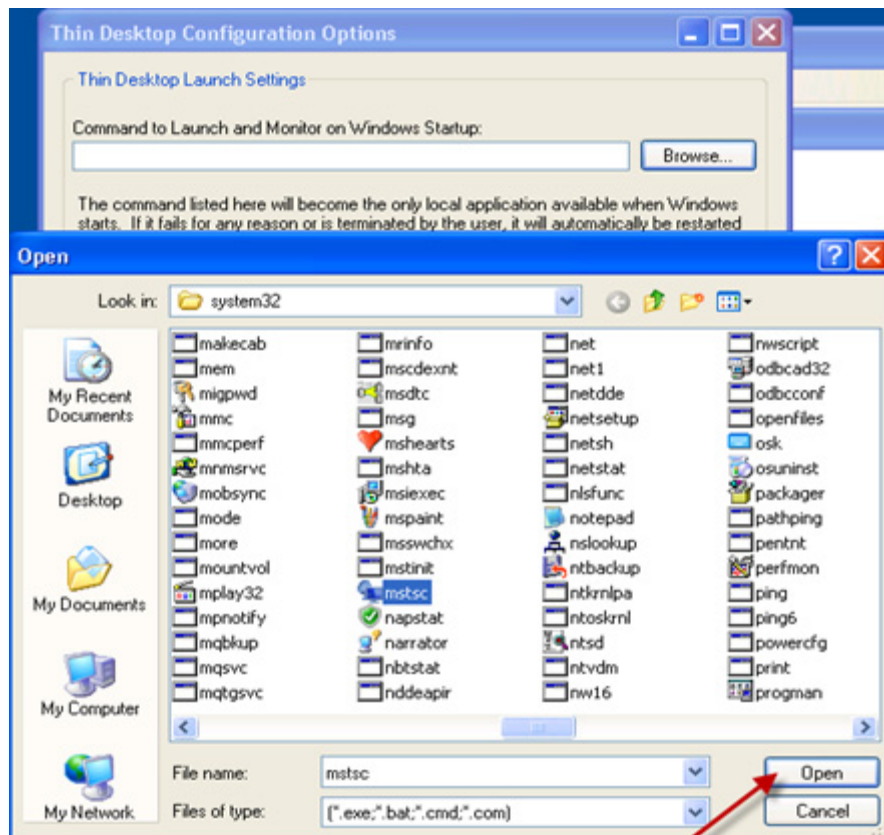


Figure 17 - Click open after selecting the correct program.

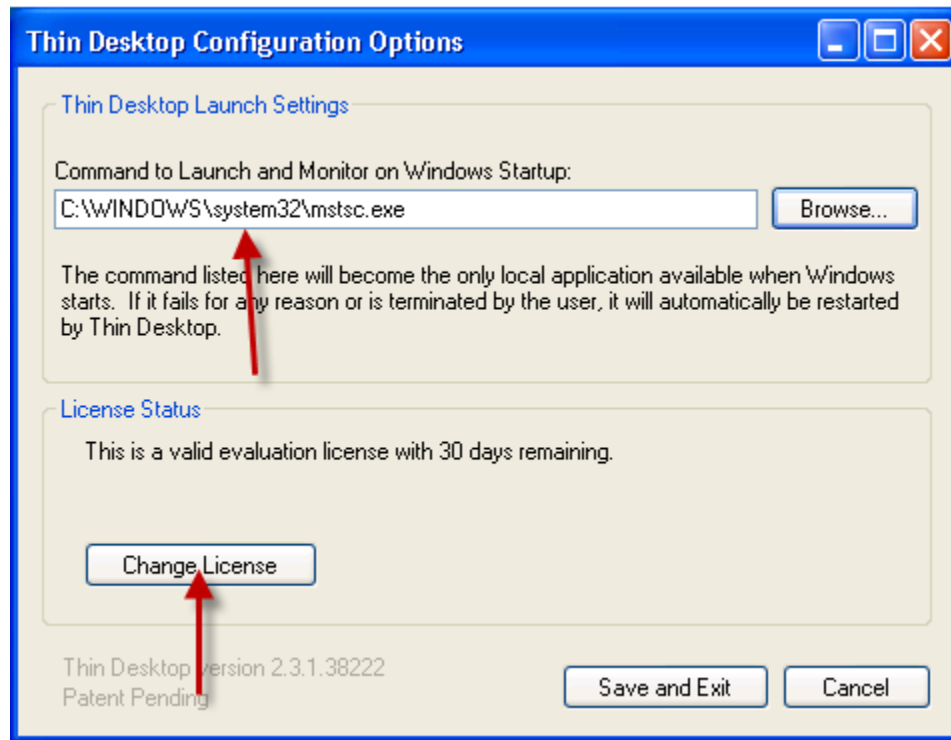


Figure 18 – Shows the command of the selection shown in Figure 17. Click Change License.

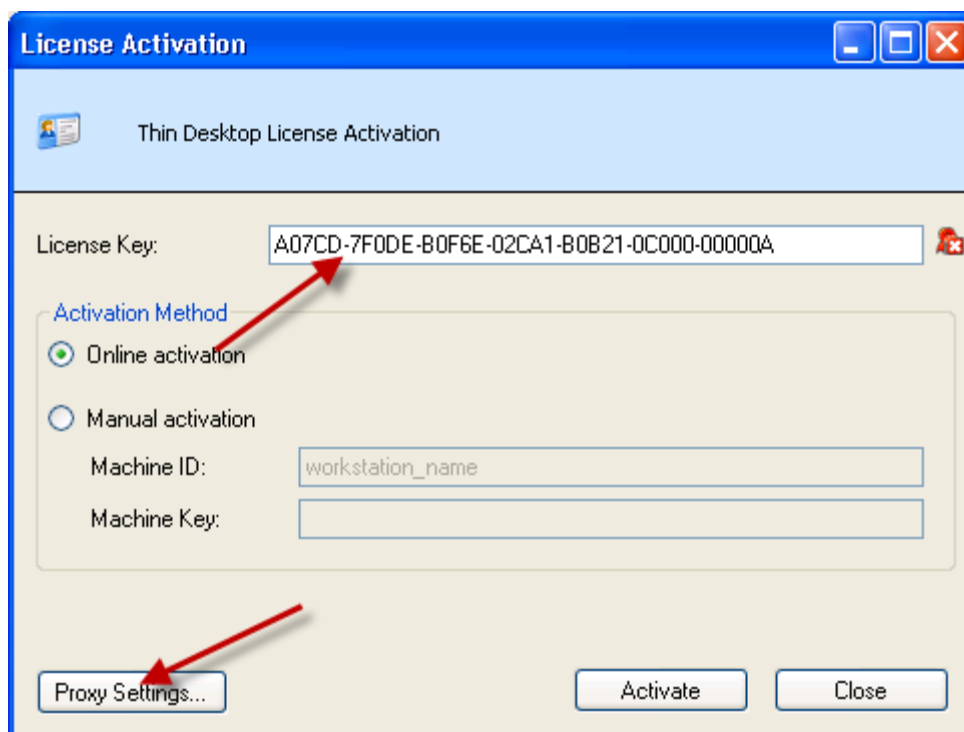


Figure 19- Enter the license key received from Thin Launch Software. If a proxy server is used within the environment, click Proxy Settings

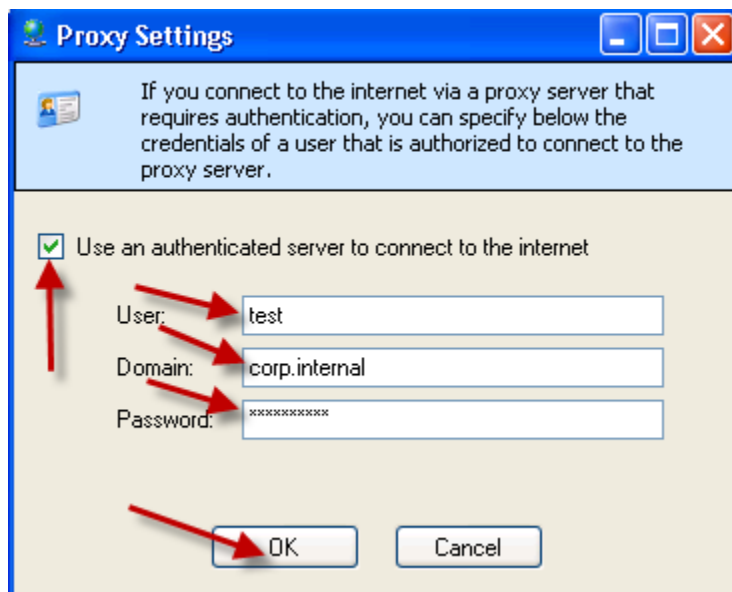


Figure 19-2 - Click Use an authenticated server to connect to the internet, enter user, domain, password and click OK

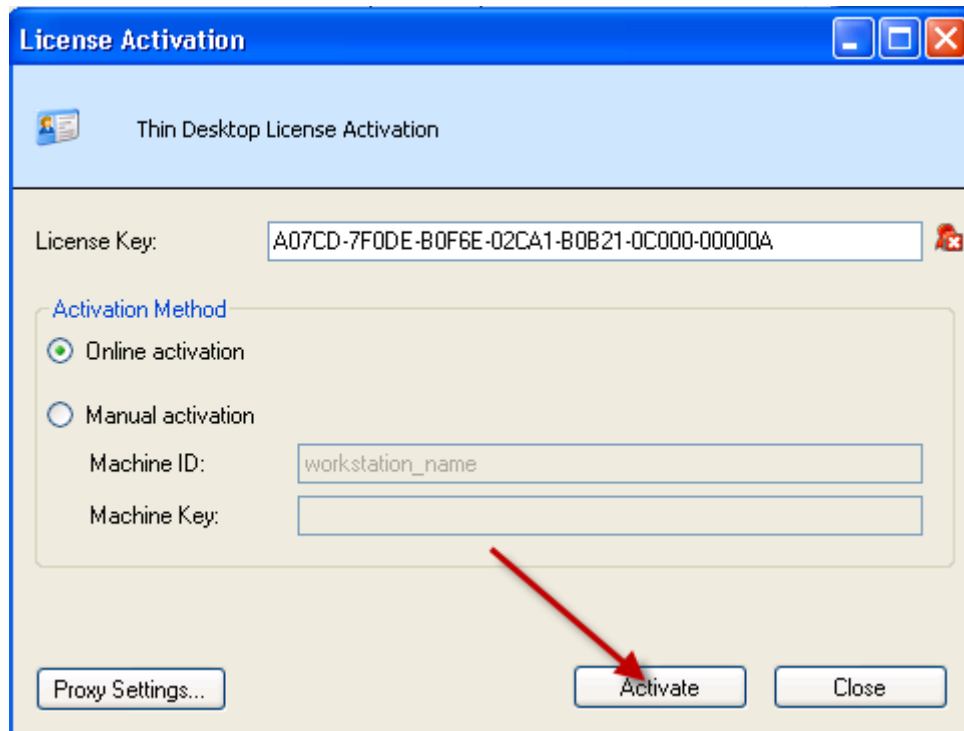


Figure 19-3 - Click Activate

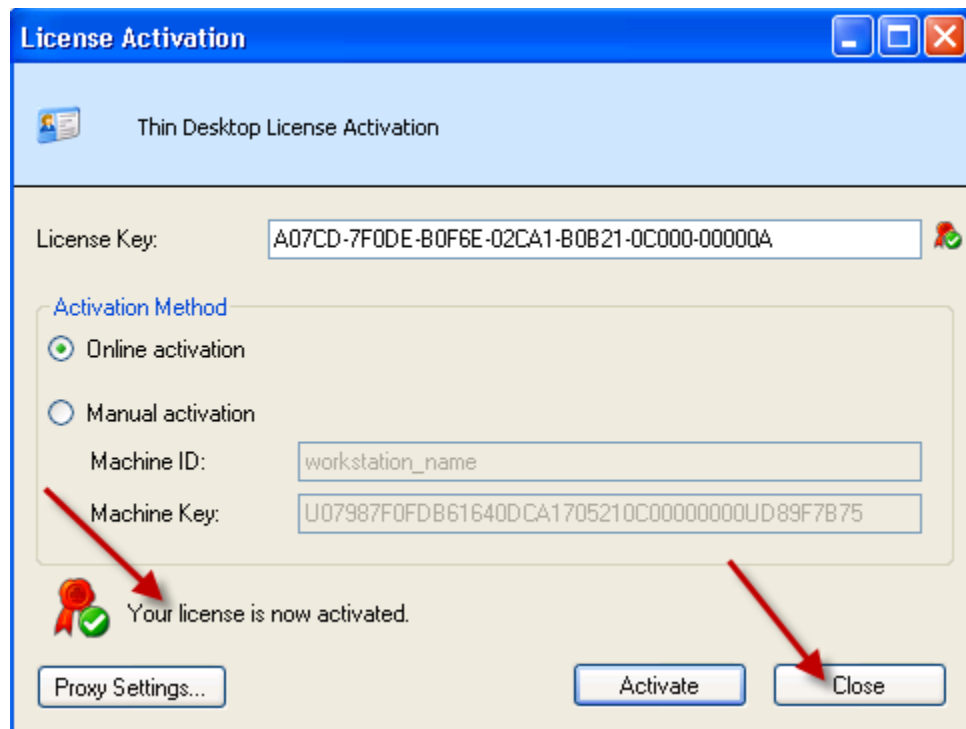


Figure 20- Once "Your license is now activated" appears click close.

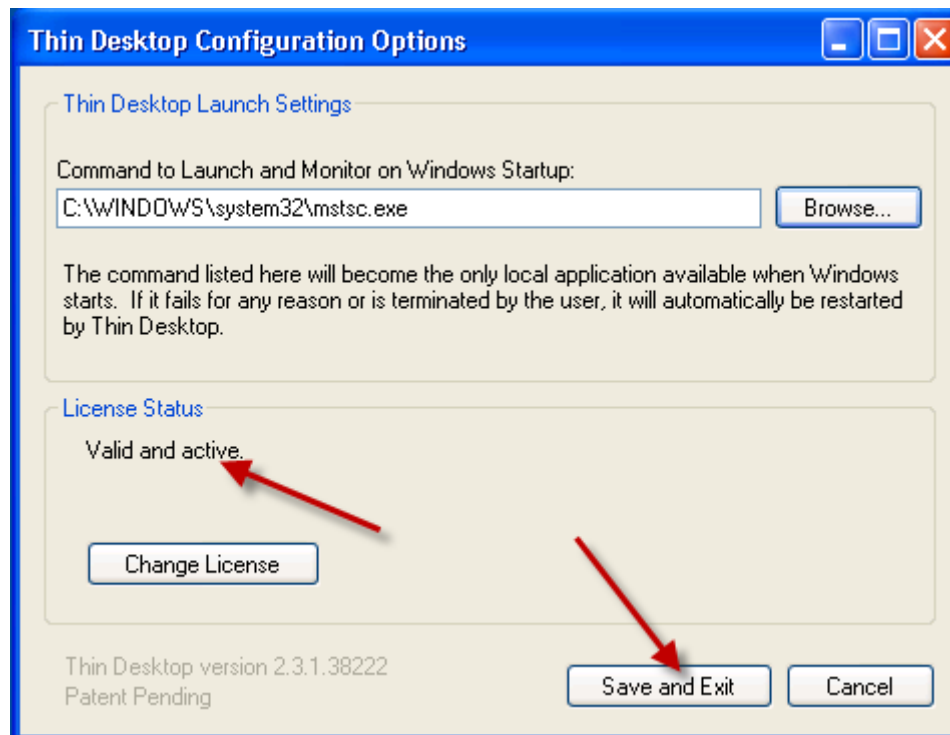


Figure 21 Under License Status section, Valid and active will appear and click save and Exit.

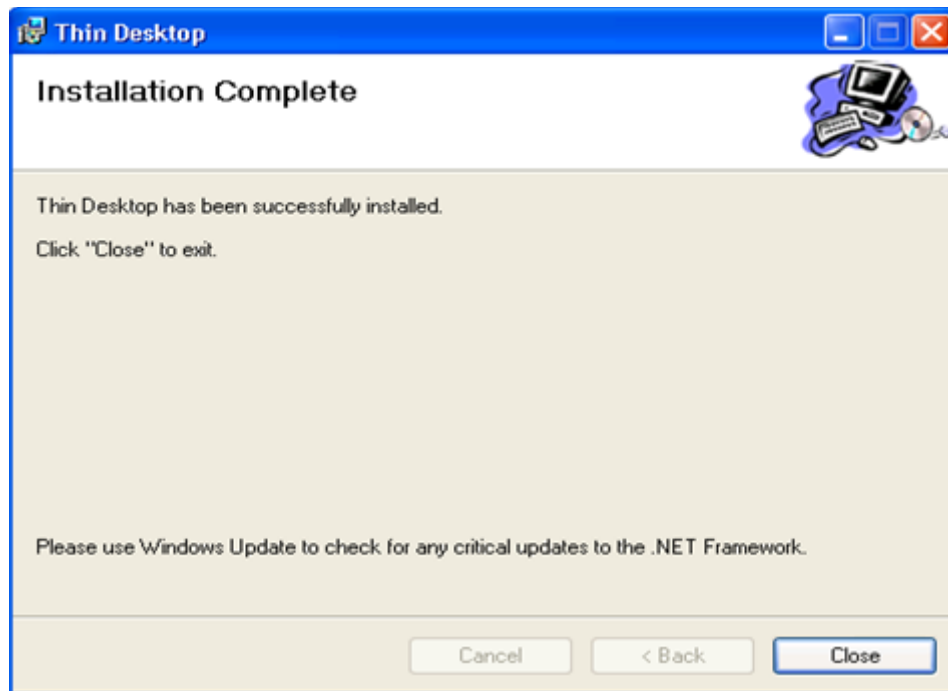


Figure 22 – Click Close

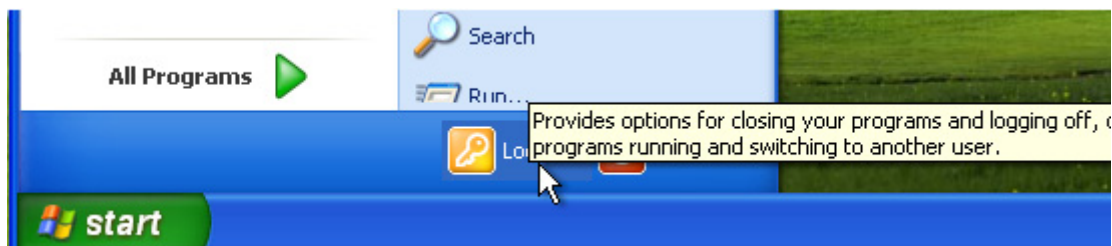


Figure 23 – Click Start and Log off

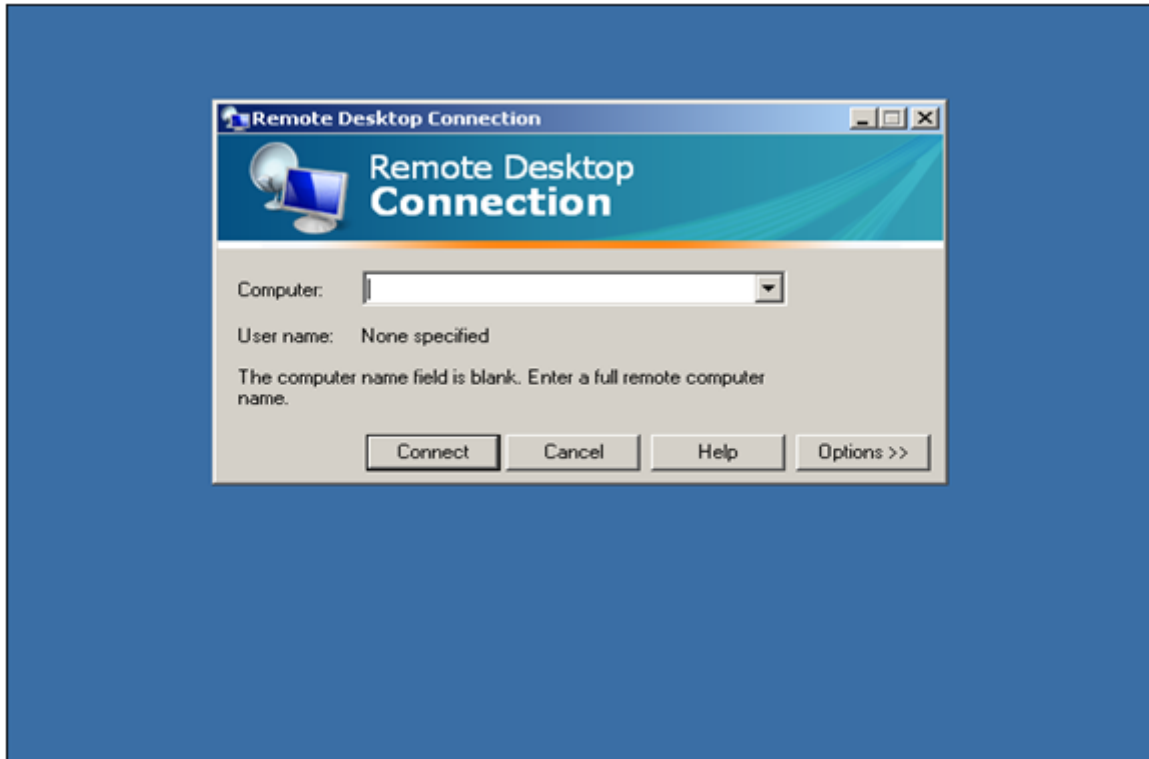


Figure 24 - The program selected within the set-up will be the only program the end-user will see.

Post-installation Tasks

After Thin Desktop™ has been successfully installed; your system is configured to run a single program on startup without prompting for a Windows login. Once you are satisfied Thin Desktop™ is configured, restarting the system will complete installation. As Windows starts, instead of the standard Windows login dialog, the command configured for Thin Desktop™ to launch will be executed. This will become the only user interface displayed and no access to Windows Explorer will be possible. See the example below.

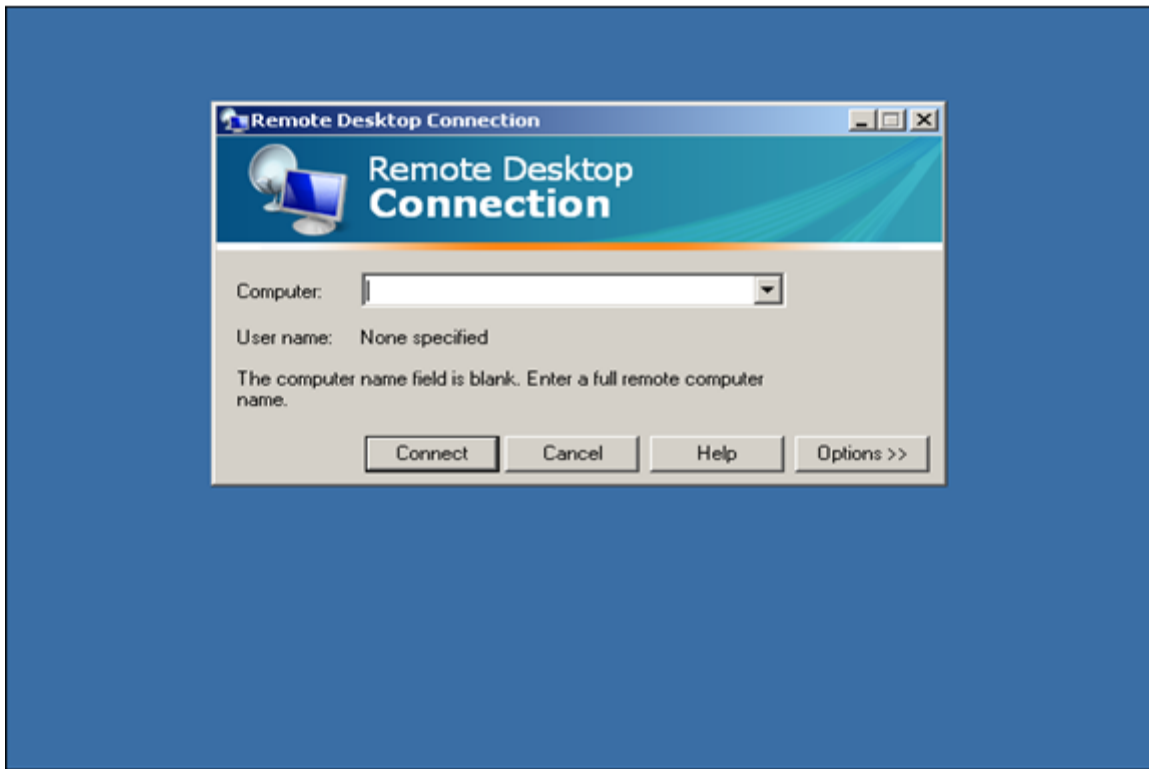


Figure 25 – After the logoff or reboot, the machine will login automatically and execute the program entered during the install.

Configuration Options

During normal operation, Thin Desktop™ requires no maintenance or user interaction. The command configured at the end of the Thin Desktop™ installation will be responsible for the only visible user interface. If it terminates in any way, Thin Desktop™ will automatically re-execute the command.

Regain Access

To regain access to the windows desktop, press CTRL-ALT-DEL and select logoff from the dialog. Upon logoff, hold down SHIFT to allow Windows to display the logon dialog.

At this point, any local user who has the appropriate permission can logon to the system and see a normal Windows desktop. To reconfigure the command executed on Windows startup, you must return to the Windows desktop. Choose Thin Desktop™ from the start menu will display the dialog which will allow you to browse to the executable or edit the command. Logging off or restarting the system will return Thin Desktop™ to normal operation. See the below figures on how to complete.



Figure 26 – After pressing CTRL-ALT-DEL click on Log Off...

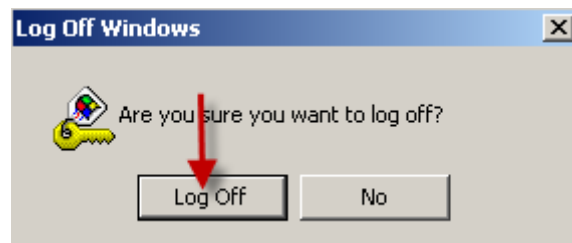


Figure 27 – Confirm by clicking Log Off and hold down the shift key

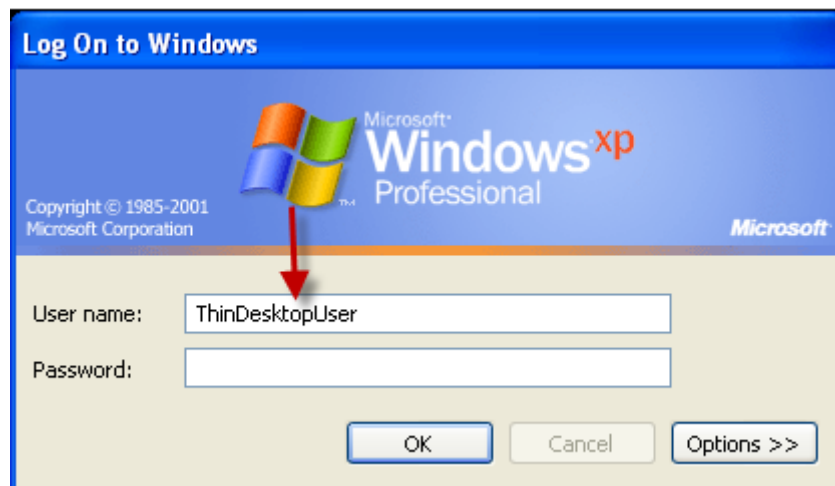


Figure 28 – Change the ThinDesktopUser to another valid user and the desktop interface will re-appear.

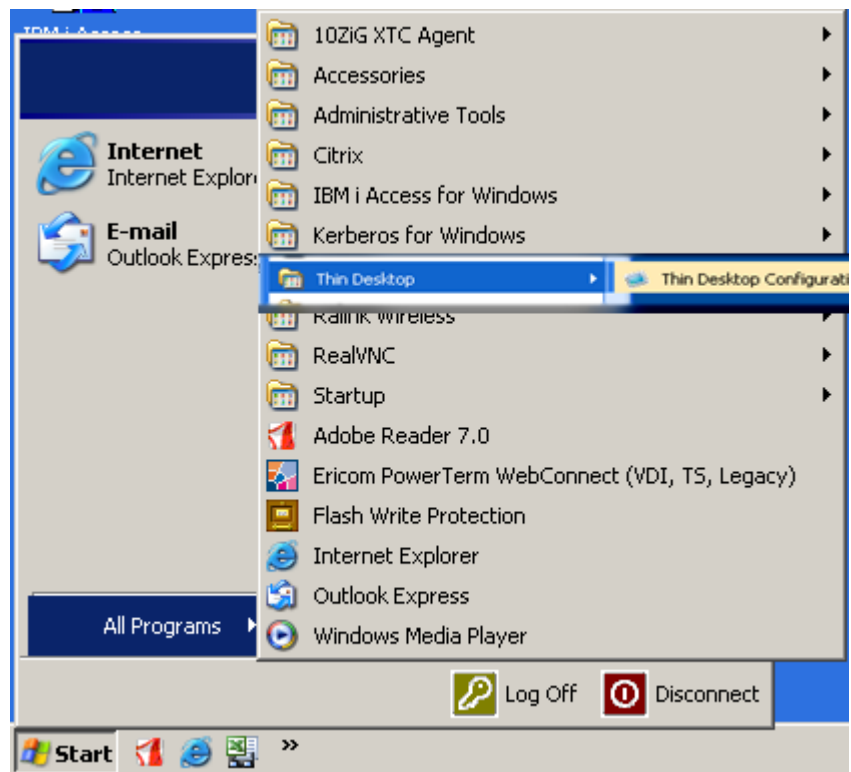


Figure 29 – Click Start – All Programs – Thin Desktop – Thin Desktop Configuration.

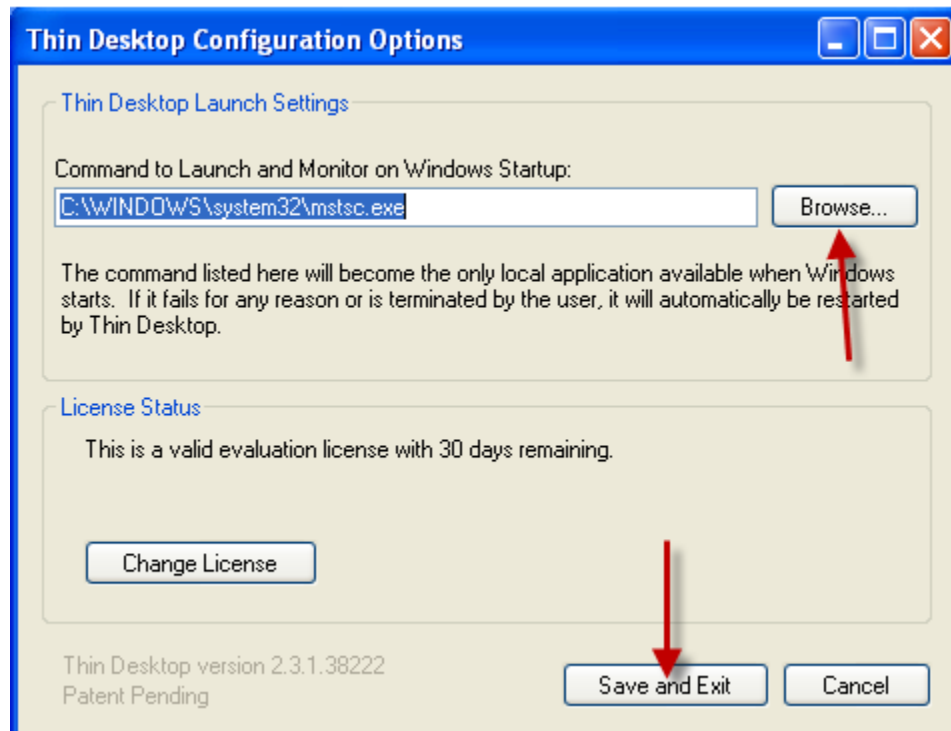


Figure 30 – Click on Browse or directly enter the location of the program Thin Desktop will launch and then click Save and Exit

Un-installation Tasks

Thin Desktop™ can be uninstalled from the Add/Remove Programs control panel in Windows. This can only be performed once you have regained access to the Windows desktop by following the procedure outlined in the previous section. Once Thin Desktop™ is uninstalled, the system will have been returned to the state it was before Thin Desktop™ was installed. Windows will start normally and display the standard logon dialog without the need to hold down SHIFT. See the below figures on how to complete.

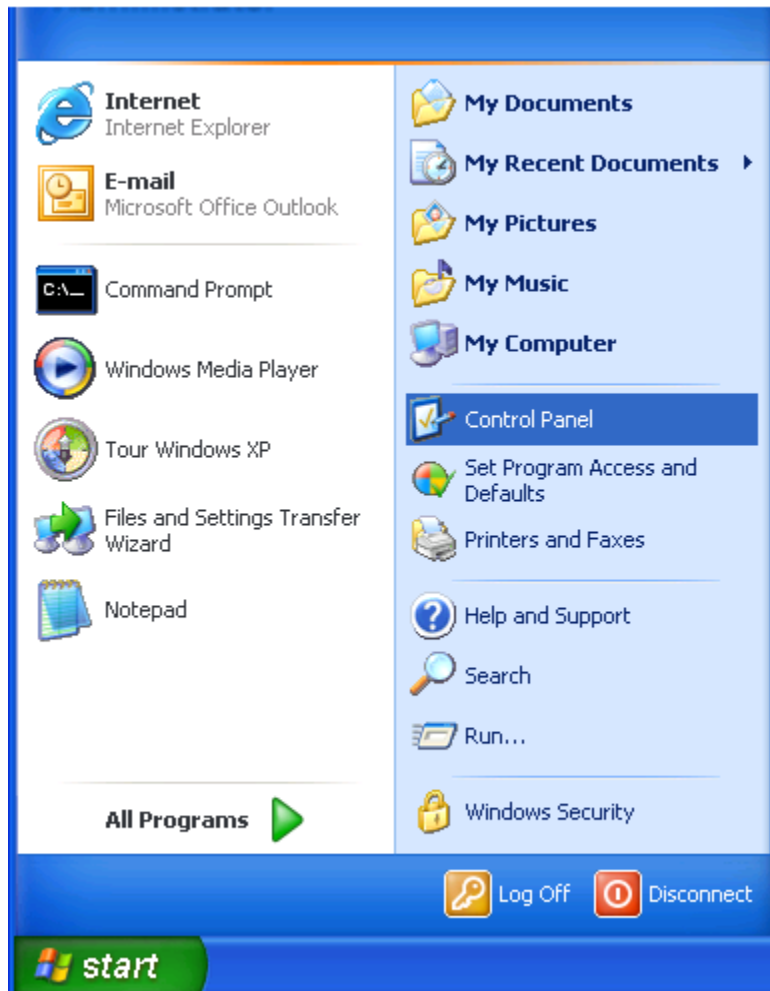


Figure 31 – Click start and Control Panel

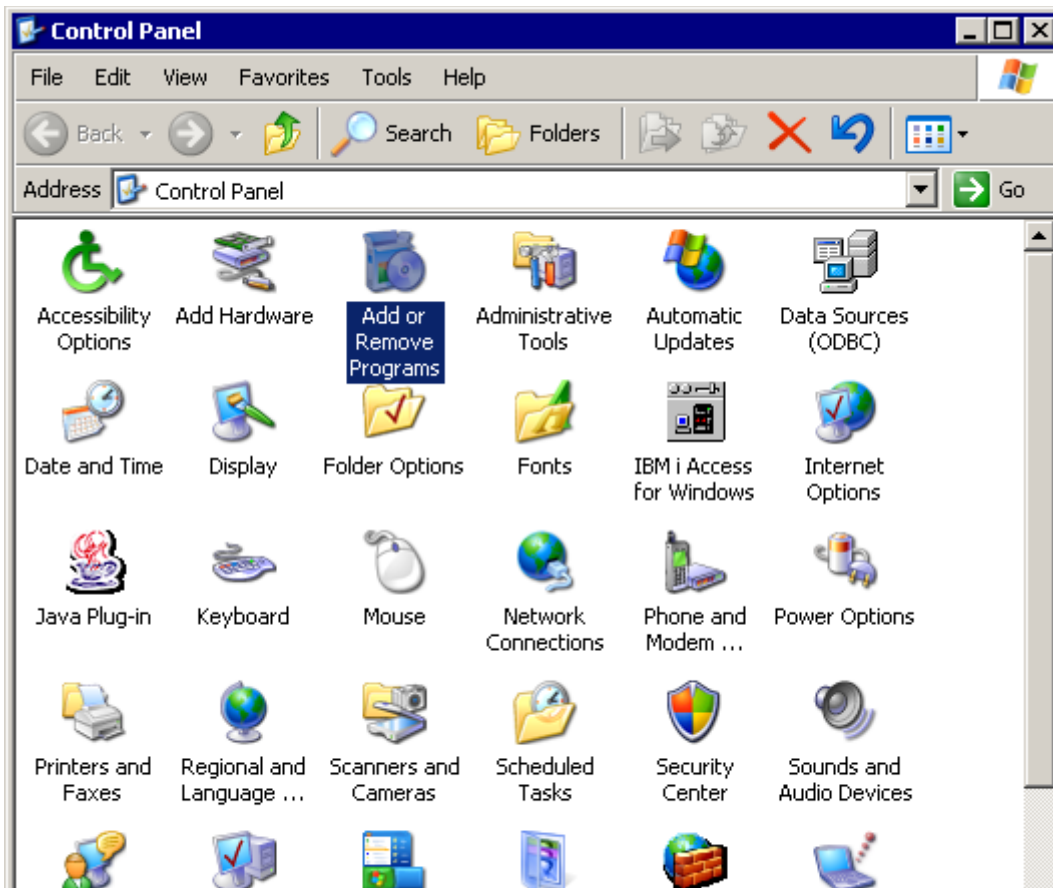


Figure 32 – Click on Add or Remove Programs

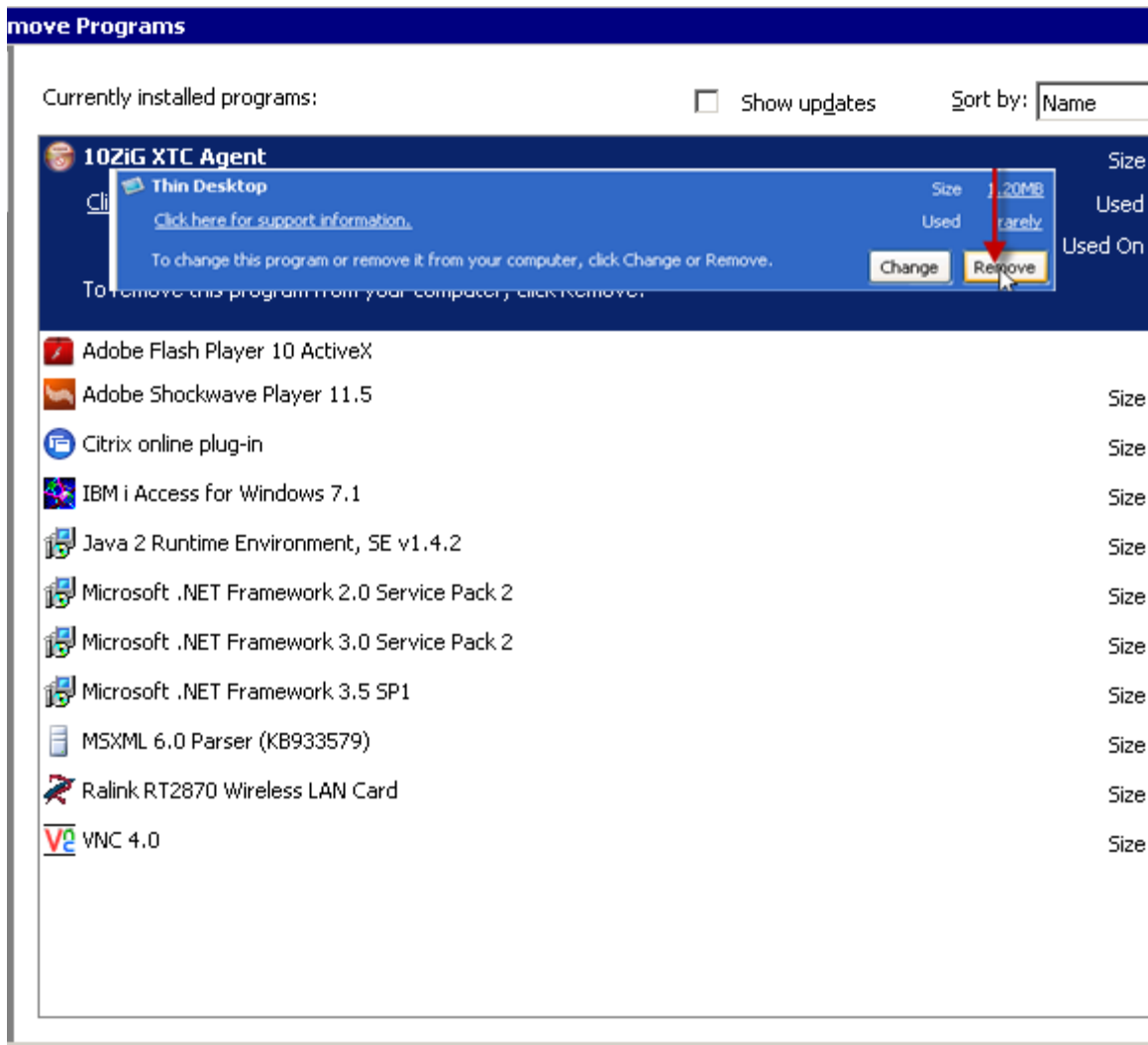


Figure 33 – Click Thin Desktop and click remove

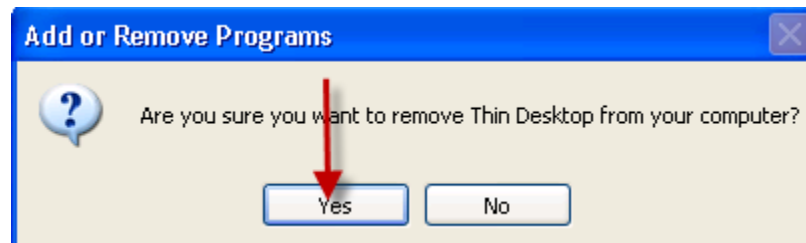


Figure 34 – Click Yes

Overriding the Default Random Strong Password of ThinDesktopUser

During initial installation of Thin Desktop™ a strong password is randomly generated for ThinDesktopUser. The following describes the procedure to override the initial random password:

To regain access to the windows desktop, press CTRL-ALT-DEL and select logoff from the dialog. Upon logoff, hold down the SHIFT key to allow Windows to display the logon dialog. At this point, any local or domain user who has the appropriate permission can logon to the system and see a normal Windows desktop.

- 1 Launch the run dialog and execute the command “control userpasswords2”
- 2 Check the box “users must enter a user name and password to use this computer”
- 3 Select the user ThinDesktopUser
- 4 Click the “Reset Password” button and enter your own password for ThinDesktopUser
- 5 Uncheck the box “Users must enter a user name and password to use this computer”. Note: Verify that ThinDesktopUser is still selected.
- 6 Click the OK button to close the dialog
- 7 Enter the password you chose for ThinDesktopUser

NOTE: It is required to change the password using the above procedure. If this is not followed, Thin Desktop™ will fail to function correctly.

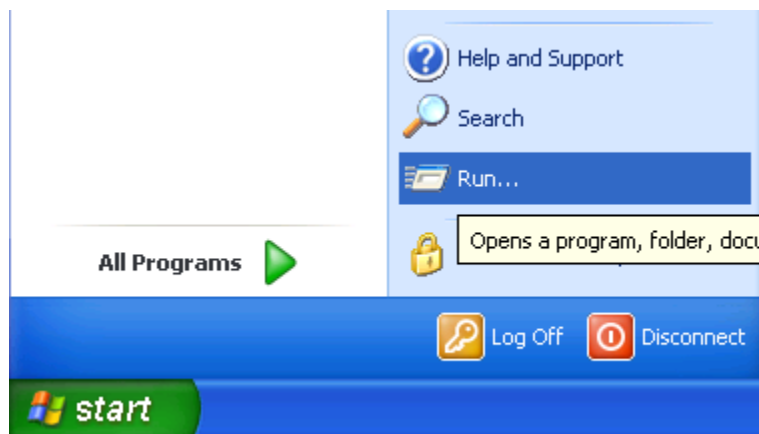


Figure 35 – Click the Start menu and run

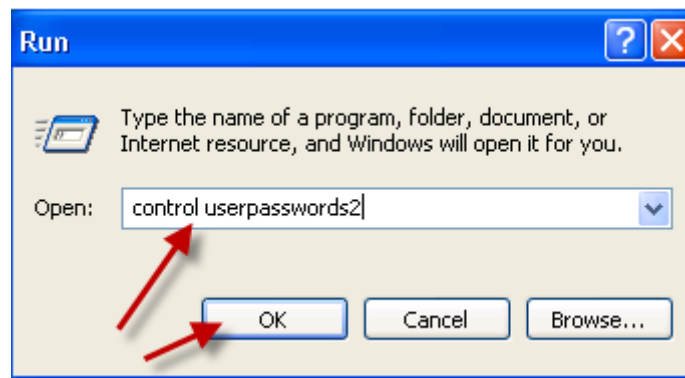


Figure 36 – Enter Control userpasswords2



Figure 37 – Click Users must enter a user name and password to use this computer. Click ThinDesktopUser and click Reset Password.

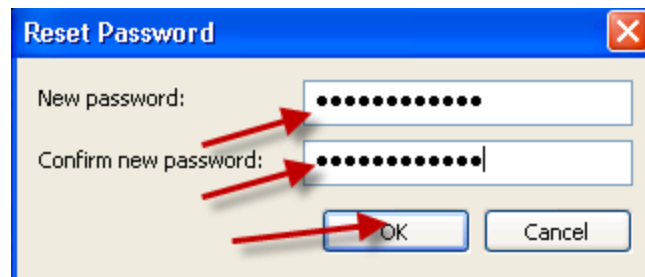


Figure 38 – Enter a new password and confirm new password and click ok

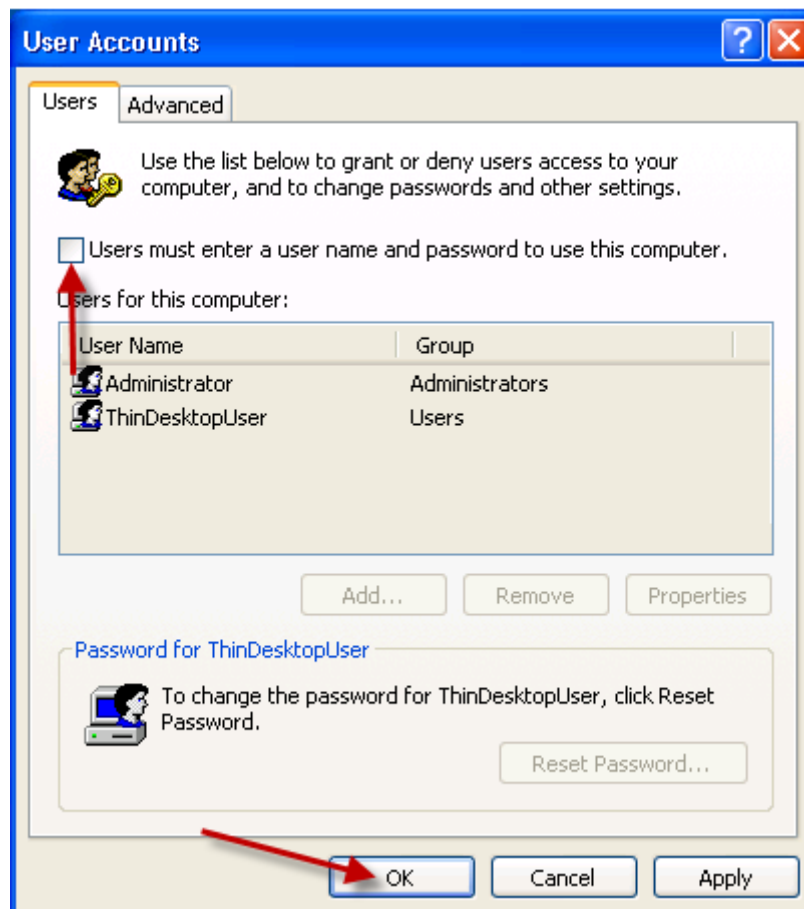


Figure 39 – Uncheck the box Users must enter a user name and password to use this computer and click OK.



Figure 40 – Re-enter password and confirm new password and click OK

How to complete license activation after evaluation license expires

Once the evaluation license expires and/or you have received a purchased license, use the following procedure to enter the license and activate:

- ∞ To regain access to the windows desktop, press CTRL-ALT-DEL and select logoff from the dialog.
- ∞ Upon logoff, hold down the SHIFT key to allow Windows to display the logon dialog. At this point, any local or domain user who has the appropriate permission can logon to the system and see a normal Windows desktop.
- ∞ Launch the Thin Desktop™ from the start menu to display the dialog which will allow you to enter and activate a valid license.

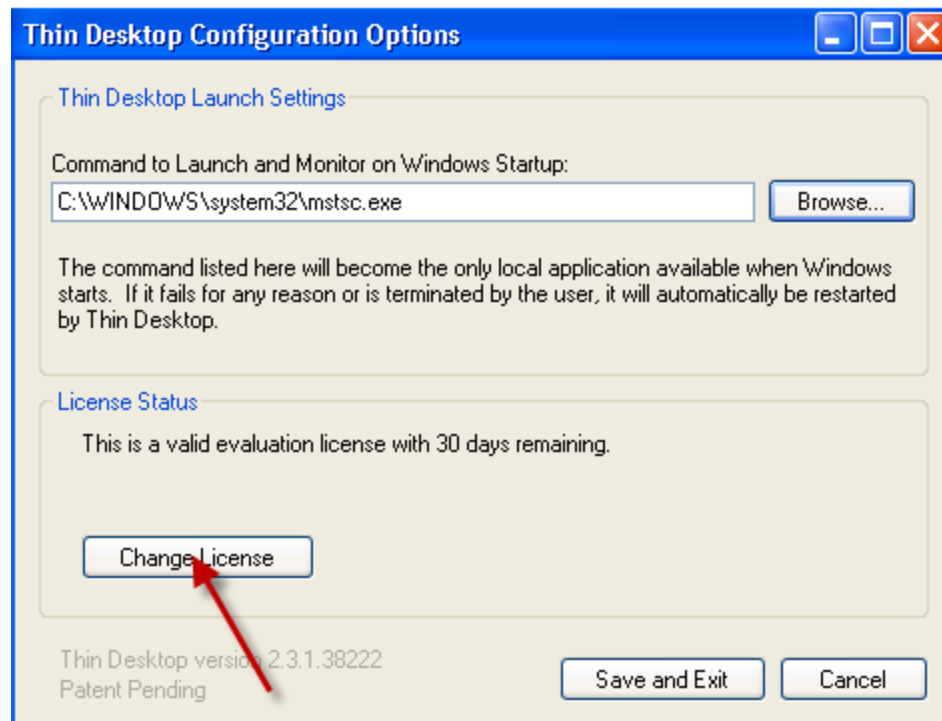


Figure 41– Shows the command of the selection. Click on Change License.

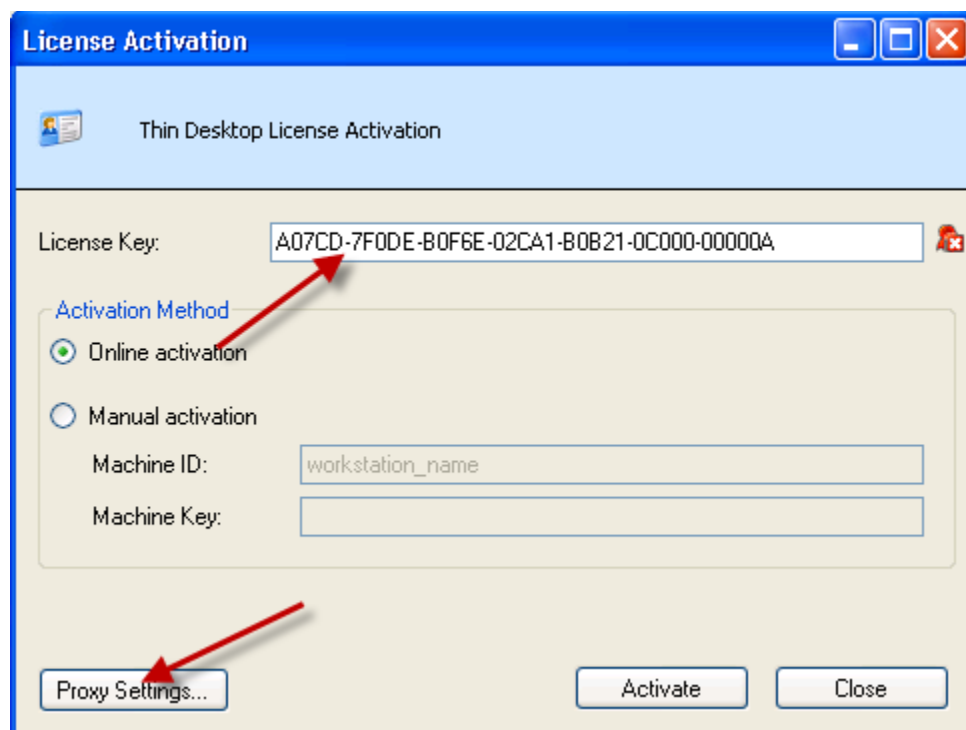


Figure 42– Enter license key received from Thin Launch Software, LLC and if a proxy server is used within the environment click Proxy Settings

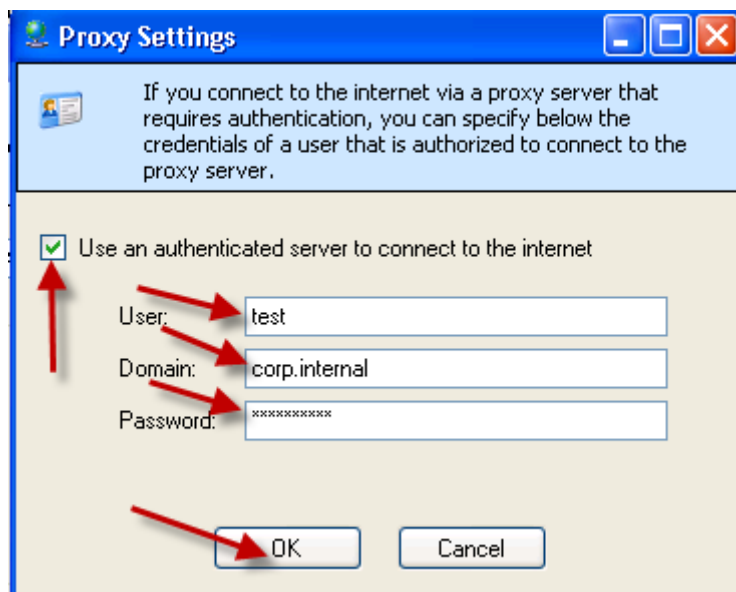


Figure 43– Click on Use an authenticated server to connect to the internet, enter user, domain, password and click on ok

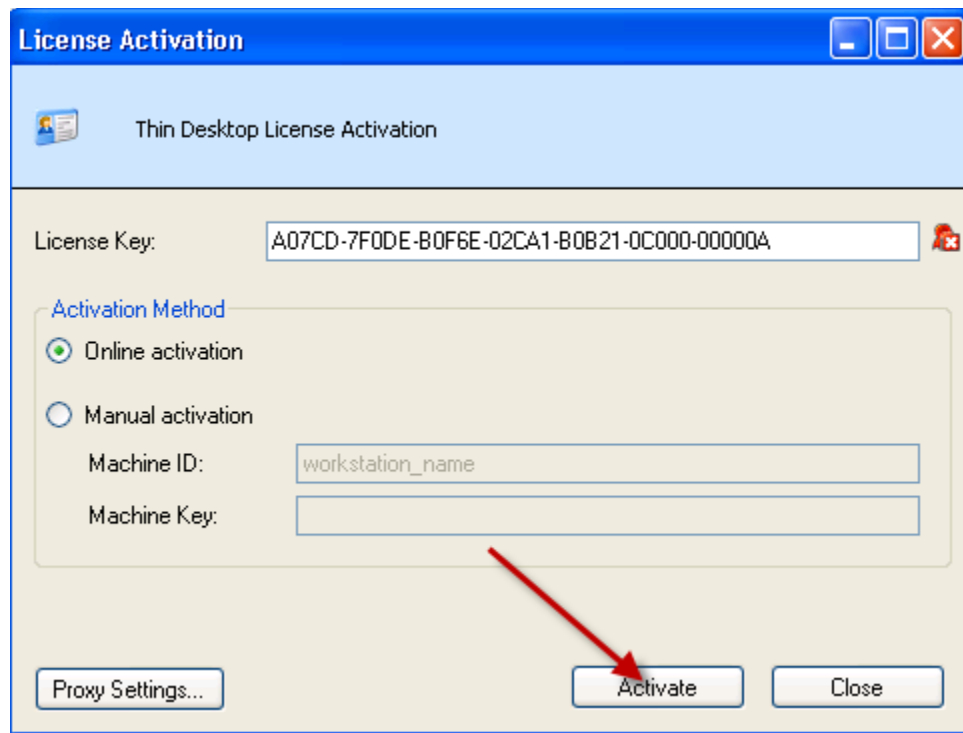


Figure 44- Click on Activate

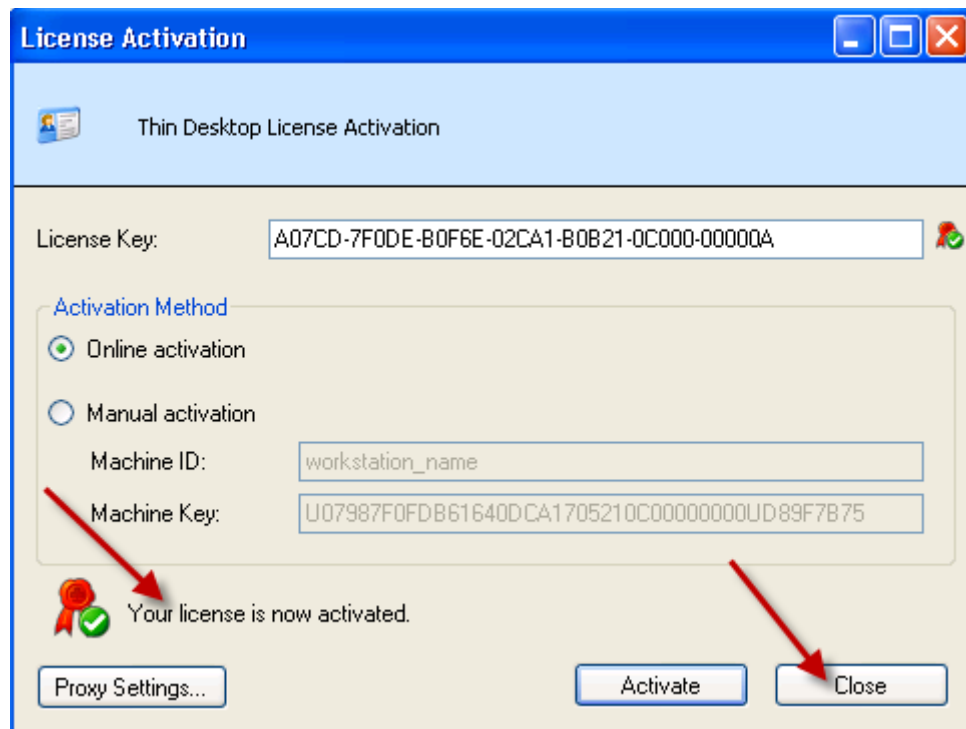


Figure 45- Once “Your license is now activated” appears click on close.

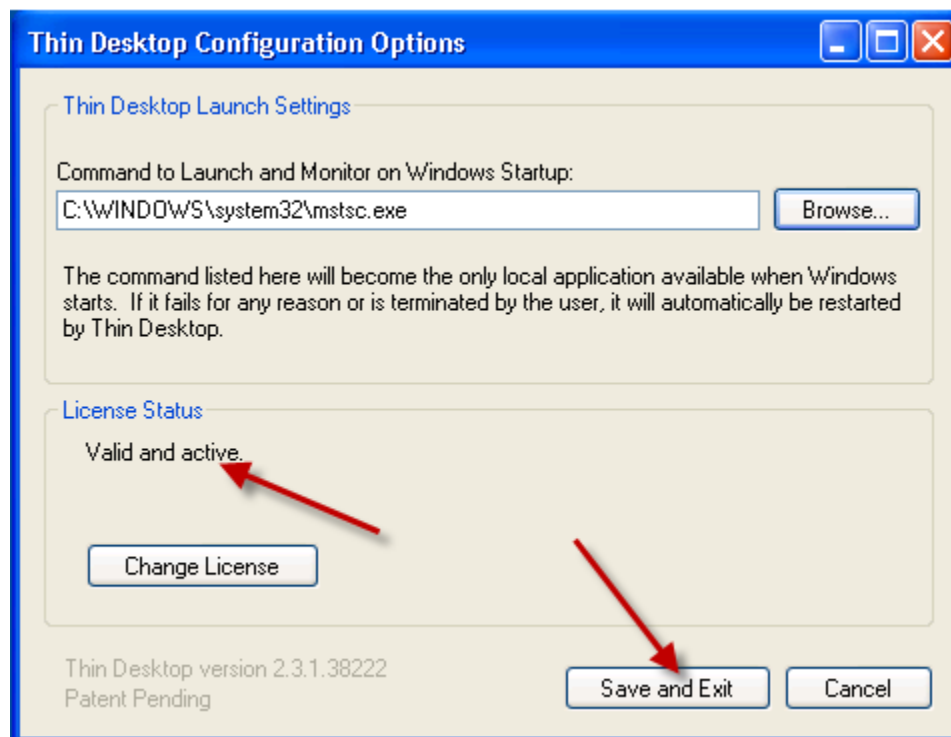


Figure 46- Under License Status section, Valid and active will appear and click on save and Exit.

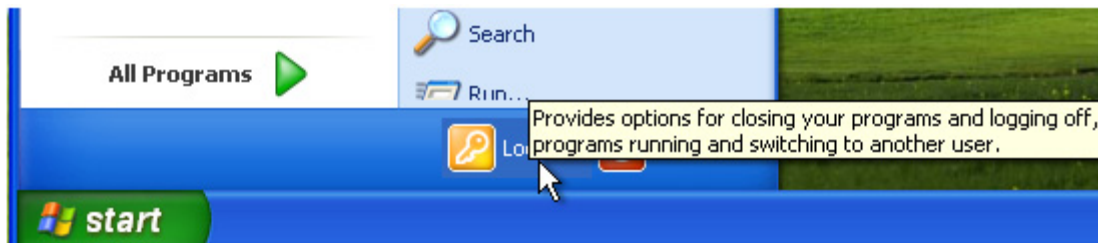


Figure 47 - Click start and log off

How to change the randomly generated default password of ThinDesktopUser

During initial installation of Thin Desktop™ the program randomly generates and configures the local ThinDesktopUser with a strong password. The following describes the procedure to override the initial random password:

- 1 To regain access to the windows desktop, press CTRL-ALT-DEL and select logoff from the dialog.
- 2 Upon logoff, hold down the SHIFT key to allow Windows to display the logon dialog. At this point, any local or domain user who has the appropriate permission can logon to the system and see a normal Windows desktop.
- 3 Open the run dialog and execute the command “control userpasswords2”
- 4 Check the box “users must enter a user name and password to use this computer”
- 5 Select the user ThinDesktopUser
- 6 Click the “Reset Password” button and enter your own password for ThinDesktopUser
- 7 Uncheck the box “Users must enter a user name and password to use this computer”. Note: Verify that ThinDesktopUser is still selected.
- 8 Click the OK button to close the dialog
- 9 Enter the password you chose for ThinDesktopUser

NOTE: It is required to change the password using the above procedure. If this is not followed, Thin Desktop™ will fail to function correctly. See the below figures on how to complete.

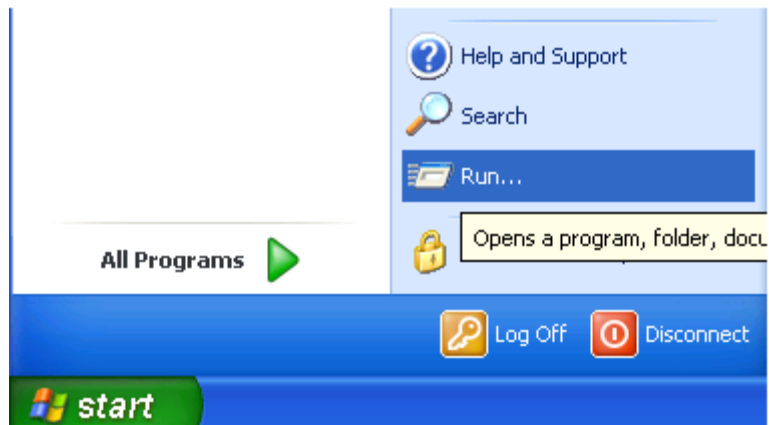


Figure 48 – Click the Start menu and run

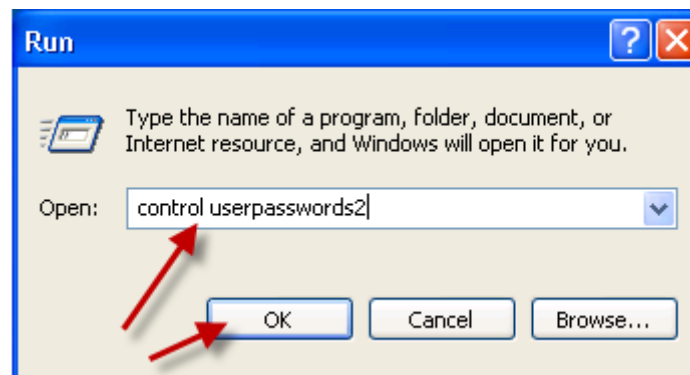


Figure 49 – Enter Control userpasswords2

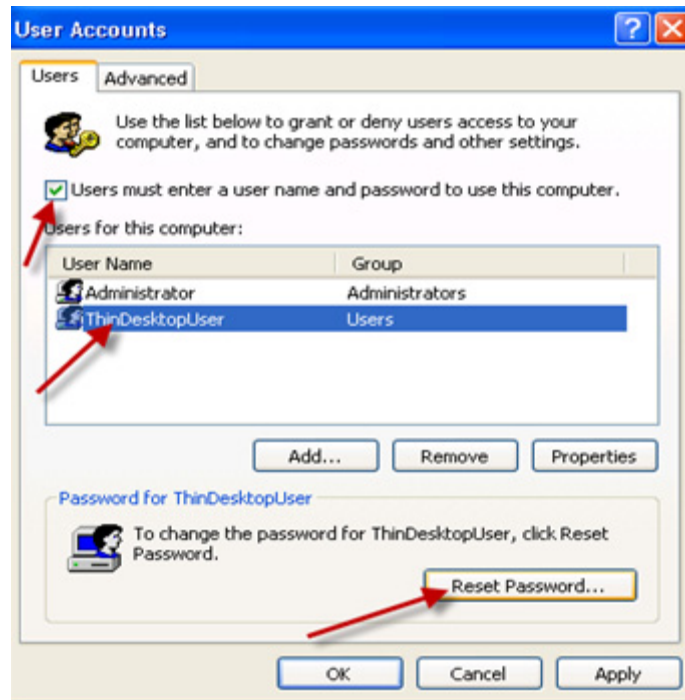


Figure 50 – Click *Users must enter a user name and password to use this computer.*
Click on *ThinDesktopUser* and click on *Reset Password.*

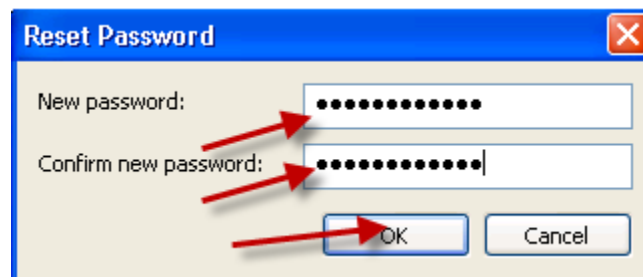


Figure 51 – Enter a new password and confirm new password and click ok

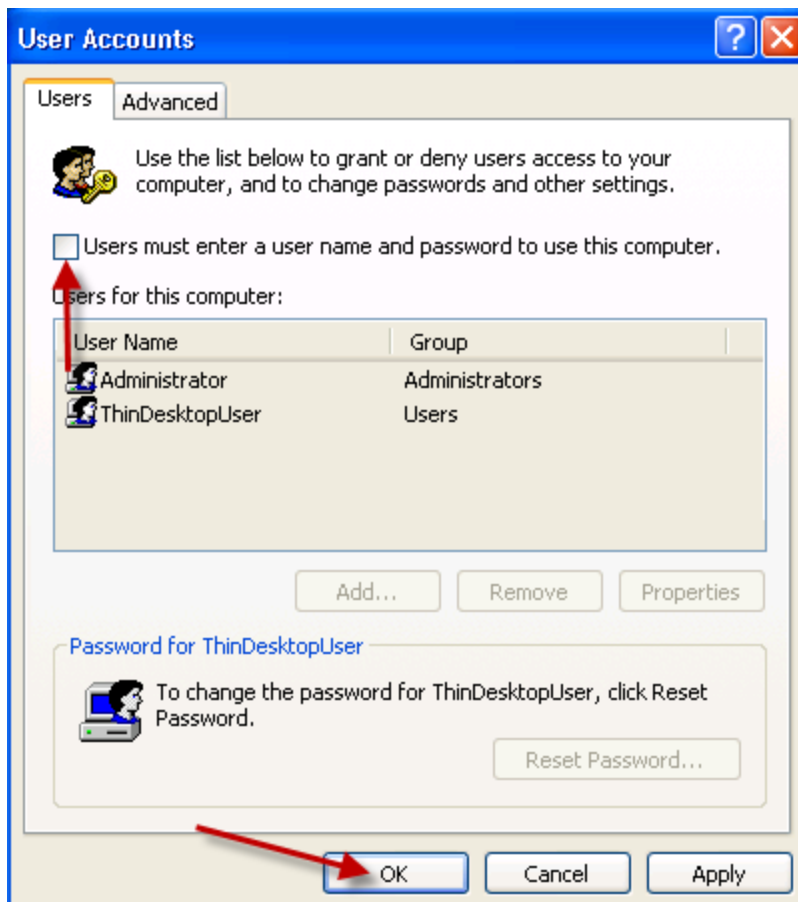


Figure 52 – Uncheck the box Users must enter a user name and password to use this computer and click OK.

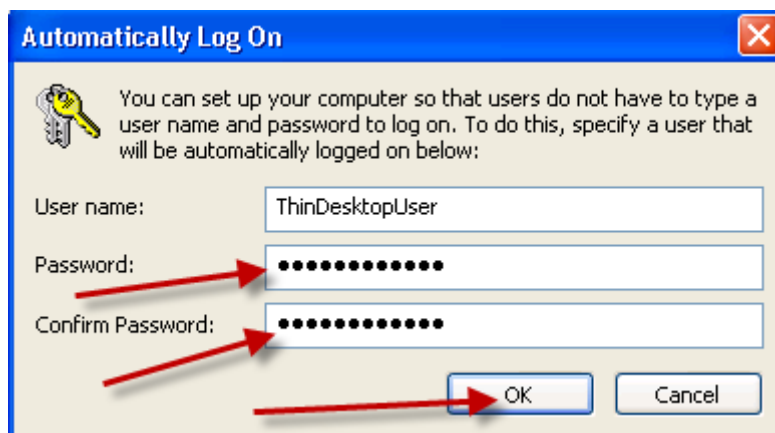


Figure 53 – Re-enter password and confirm new password and click ok

Local Log on Security Rights

For Thin Desktop™ to work properly it requires the “log on locally” right be given to ThinDesktopUser. Upon completion of the installation of the Thin Desktop™, ThinDesktopUser is a member of the local user group which, by default, has the “log on locally” right.

To check if ThinDesktopUser has the “log on locally” right, run secpol.msc, under security settings→Local Policies→User Rights Assignment→Log on Locally and verify the local users group is listed. See the below figures on how to complete.

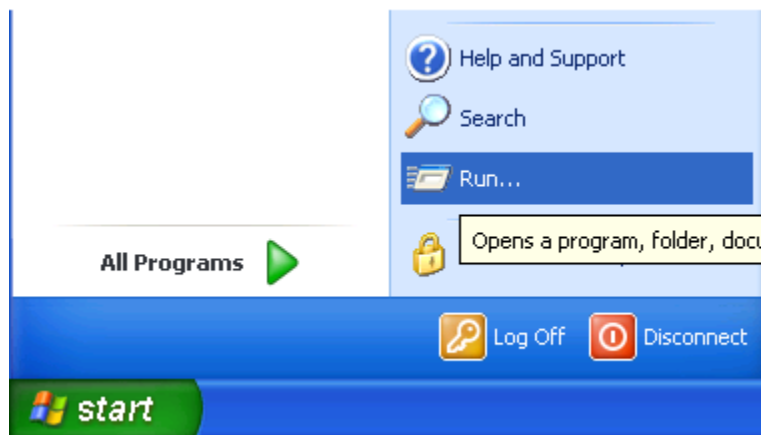


Figure 54 – Click the Start menu and run

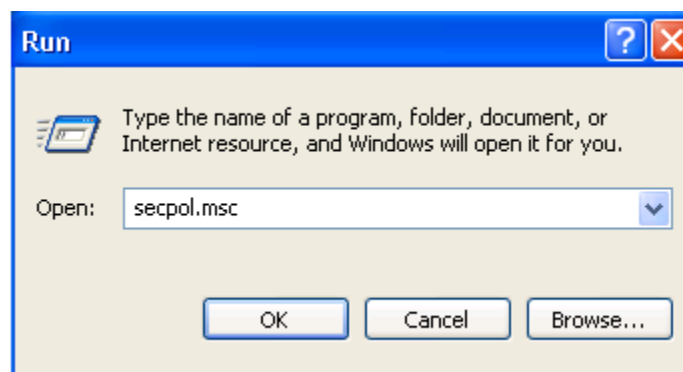


Figure 55 – Type secpol.msc

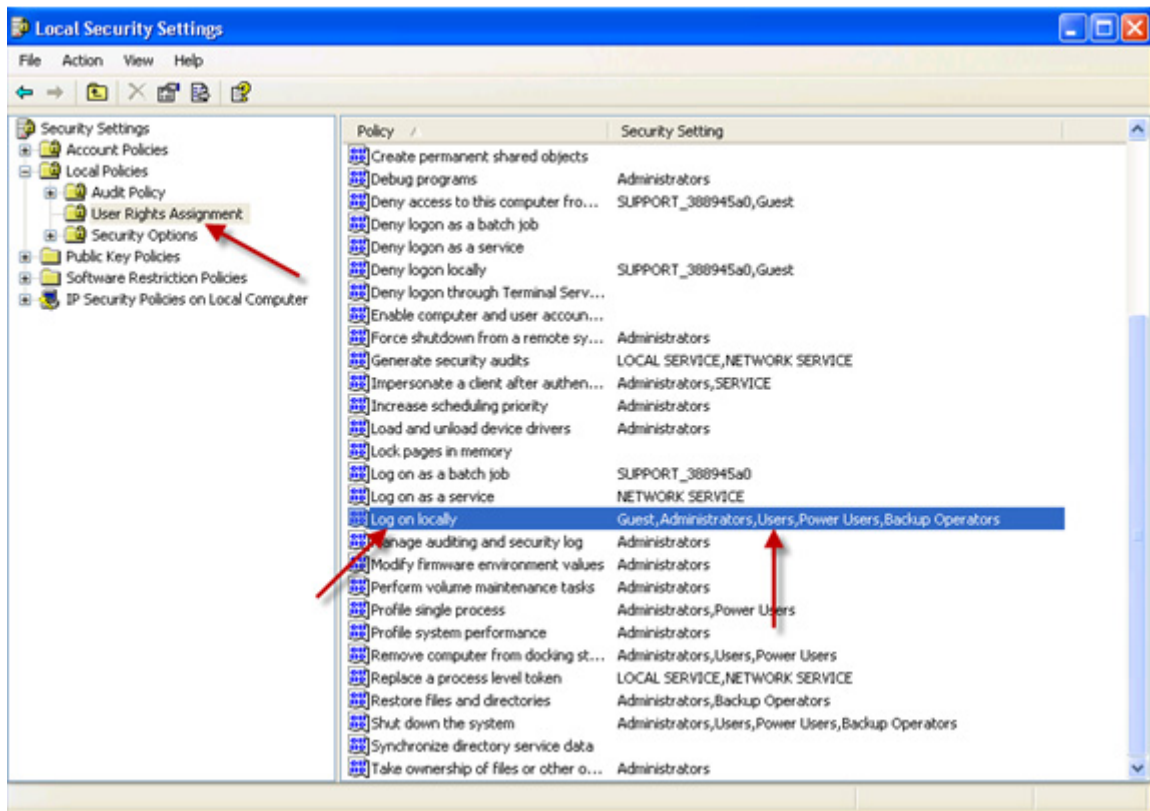


Figure 56 – Select Local policies-User Rights Assignments within the left window pane and select the log on locally within the right window pane to verify users group is listed.

NOTE: After installation and configuration is complete, enable EWF (Write Protection).