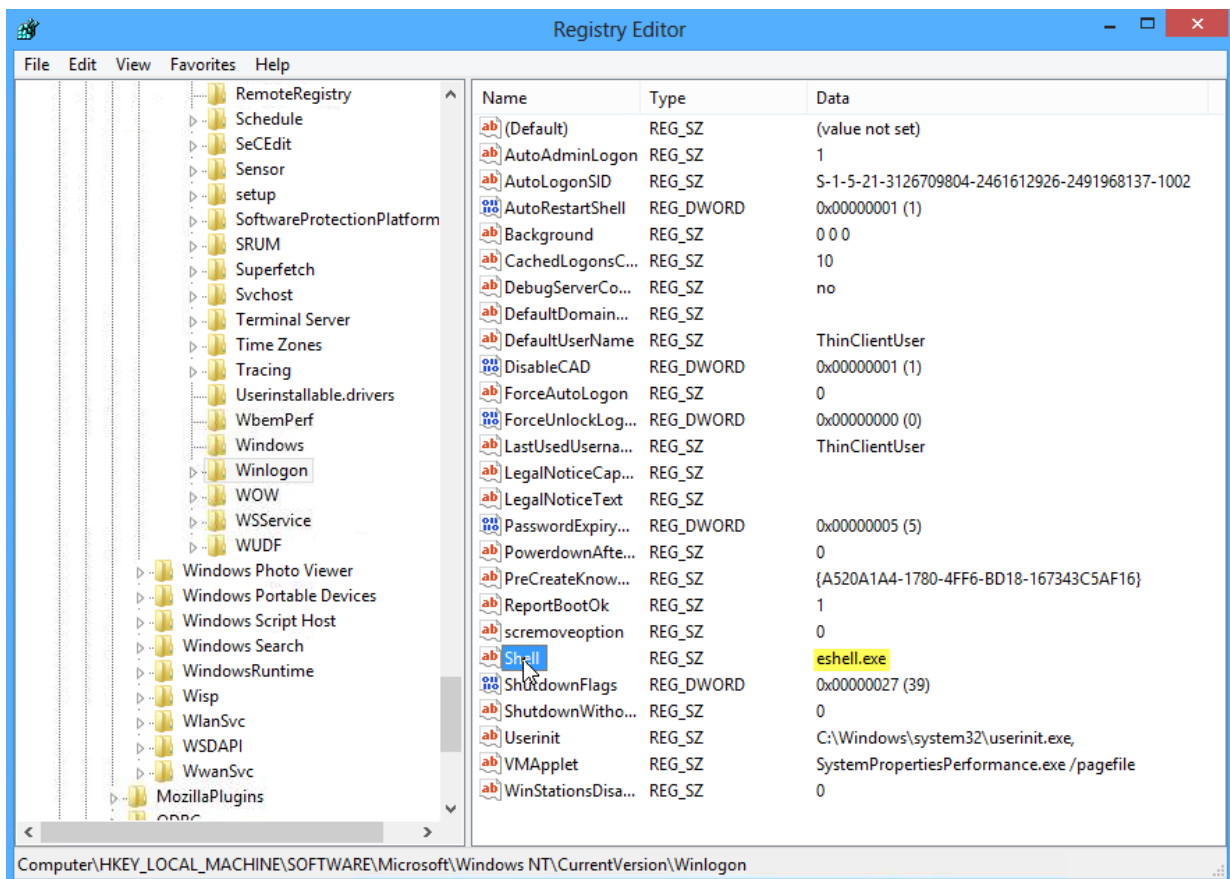
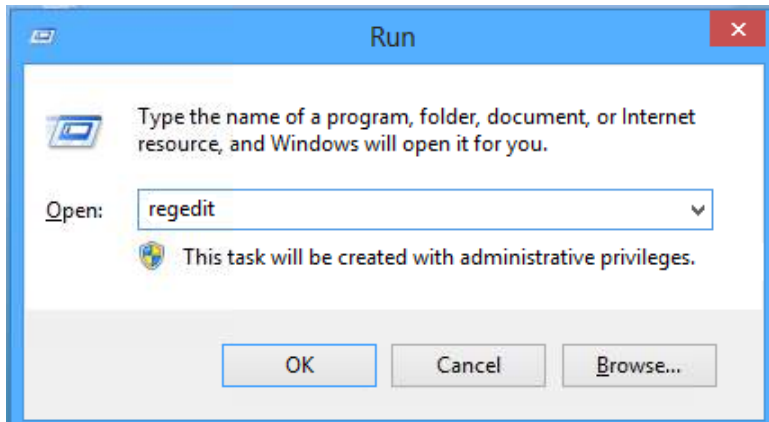


## MSTSC.exe auto launch with WE8 And embedded lockdown manager.

Log on as Administrator and verify that the follow registry key is set to eshell and not explorer.exe

HKLM\Software\Microsoft\WindowsNT\currentversion\Winlogon\shell

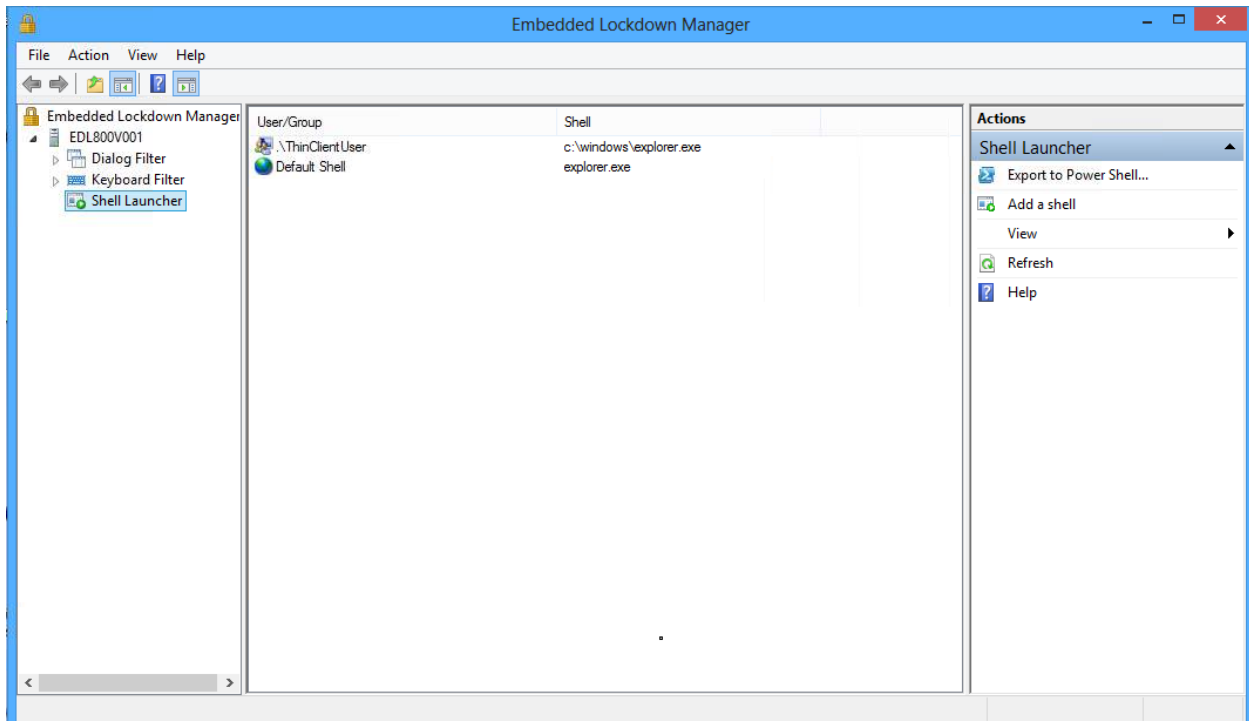
On the Thin Client while logged on as Administrator open regedit by click the Windows key + r at the same time then type in regedit



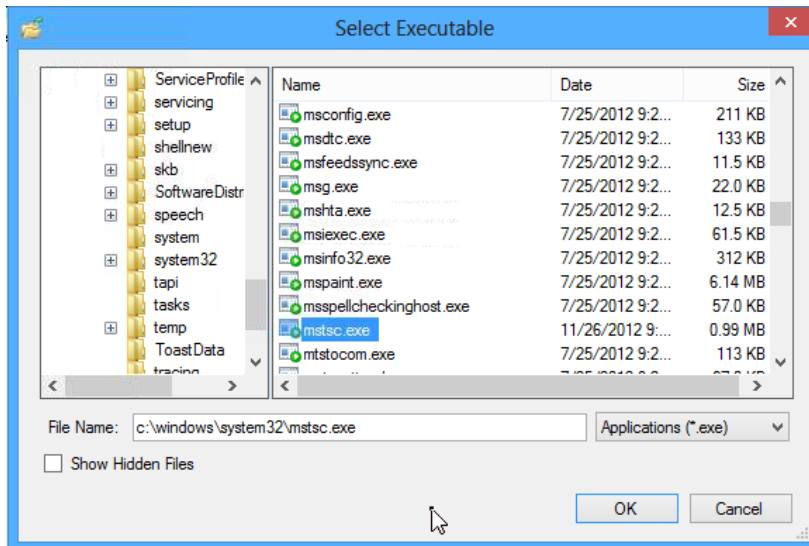
You can now close the regedit program and now open the Embedded Lockdown Manager



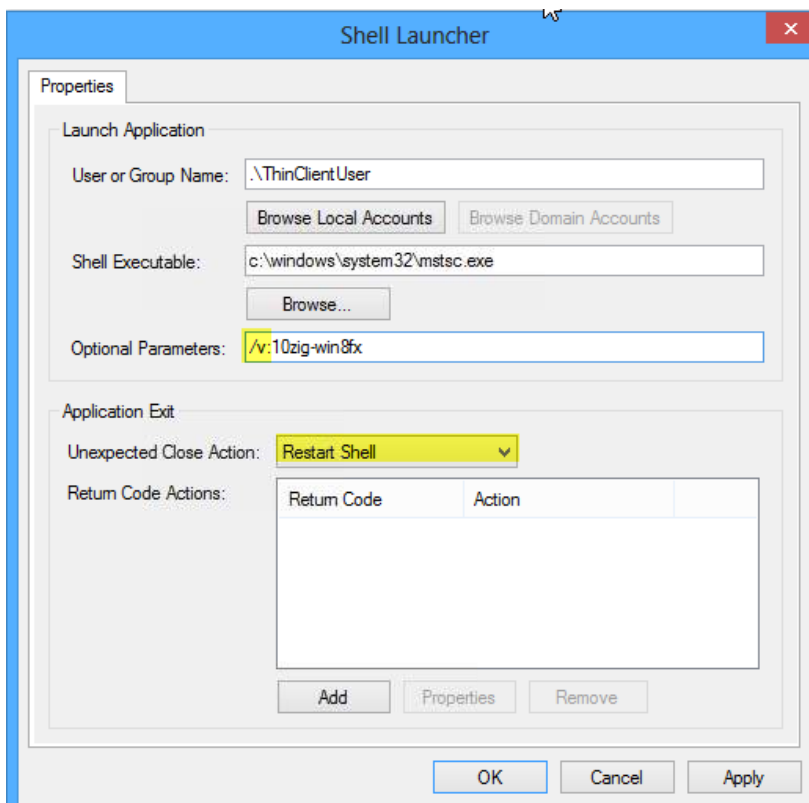
Click on Shell Launcher and you'll see ThinClientUser is set to use explorer.exe we will change this to use mstsc.exe



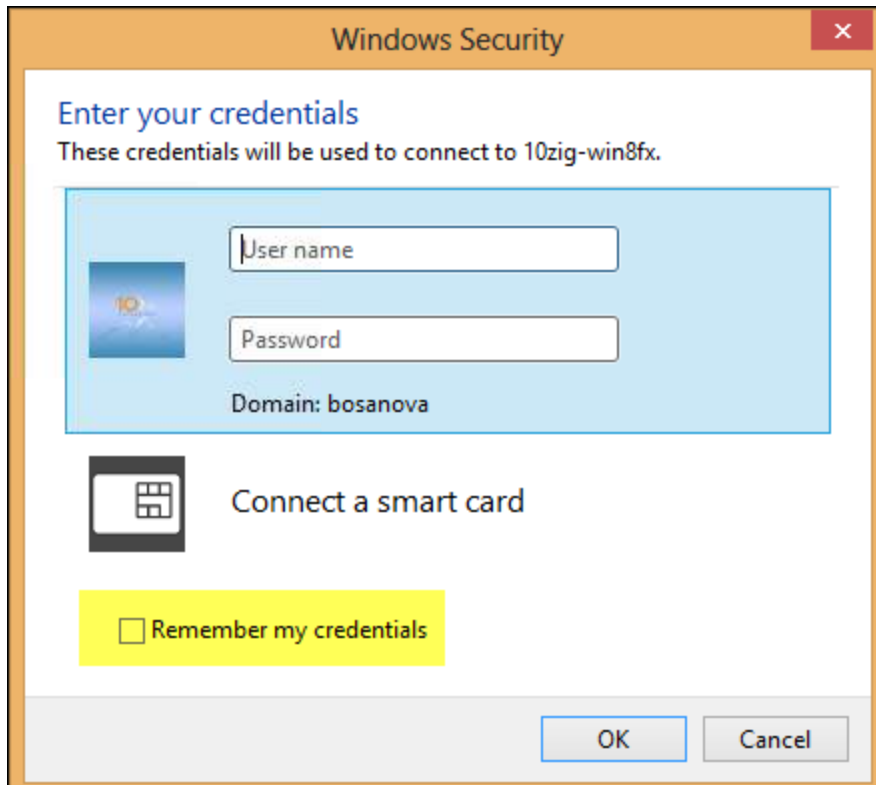
Double click on ThinClientUser and under Shell Executable, we will use the browse button to navigate to C:\Winodws\System32 and choose mstsc.exe



For optional Parameters we can set the server name we want to connect to with the /v:Computer name  
 This will auto connect to the server name you provide. You can also choose what you would like to have happen when a user closes the shell, we have our set to restart shell, which is a user closes out of the RPD session the session starts over and connects back to the RDP server as this is the only executable that ThinClientUser can now use. Hit apply and then OK when you have your options set. And close out of the Embedded Lockdown Manager. Reboot the unit and if ThinClientUser is set to auto logon you should see the follow screen when the unit comes back up



Reboot the unit and if ThinClientUser is set to auto logon you should see the follow screen when the unit comes back up



Enter the username and password, if connecting using a domain account type the user name as follows  
DOMAIN\Username and **make sure to check Remember my credentials.**

Once this is set this Thin Client will only log on locally as ThinClientUser and then log on to the RDP session as the user that you supplied the credential's for ...