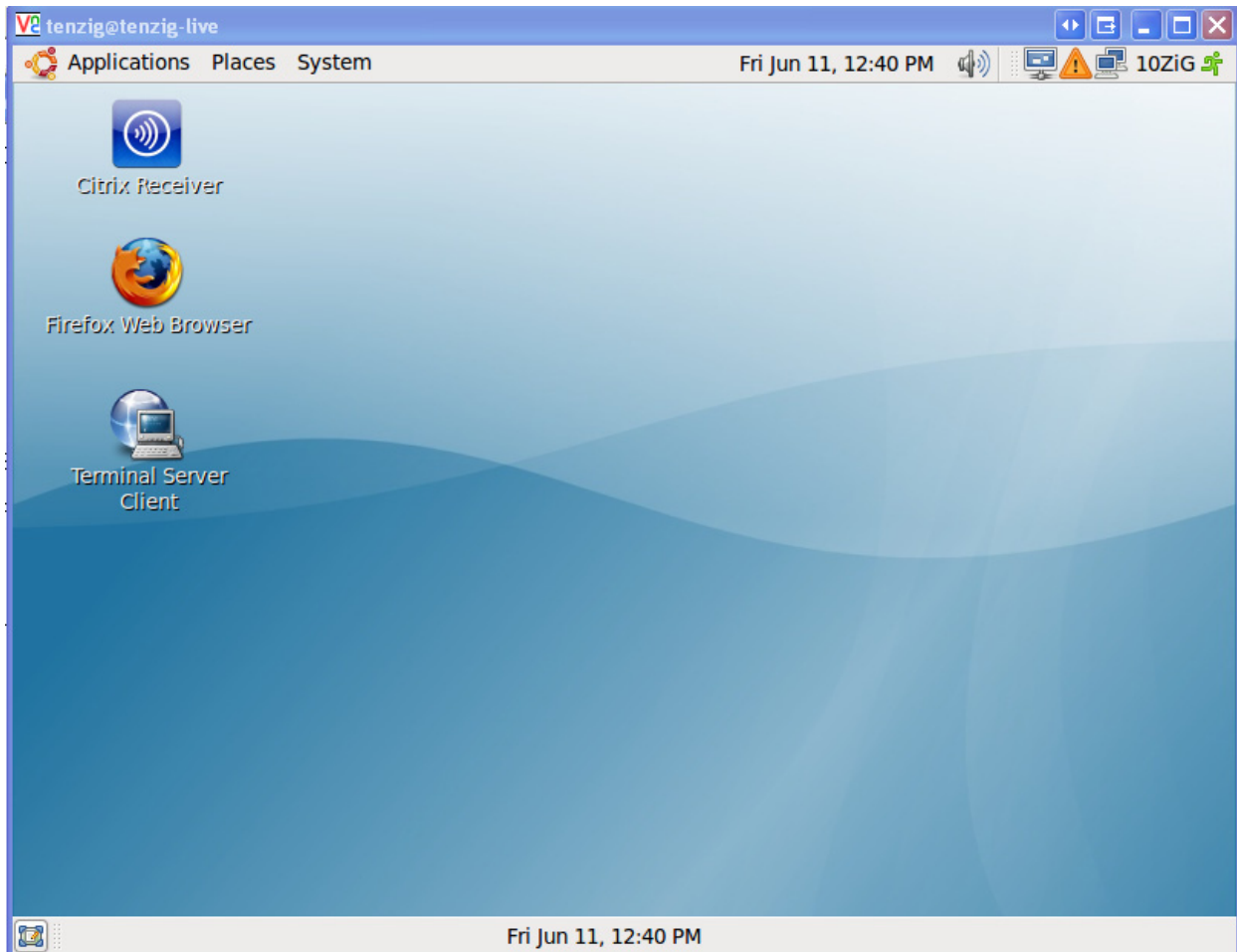


10ZiG USB Linux Desktop

- Place the USB thumb drive in a USB port on the PC.
- Boot the PC into the BIOS and change the boot order to boot first from a USB thumb drive. Save changes and exit the BIOS.
- The PC will now boot from the USB thumb drive into the GNOME desktop prompting for a user ID. The default user ID is “10ZiG” and will automatically log onto the desktop in 10 seconds.



Configuring Citrix Receiver

You can start the Citrix Receiver by either double clicking on the Citrix Receiver ICON



on the desktop or go to Applications - > Internet - > and Click **Citrix Receiver**



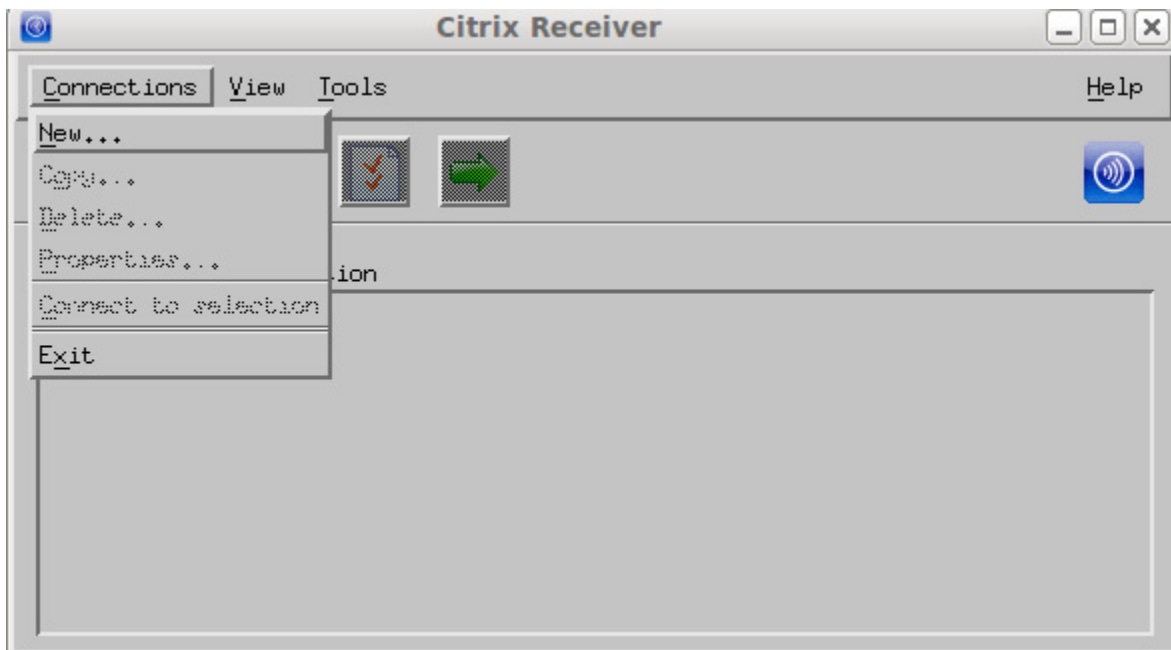


Creating Connection Entries

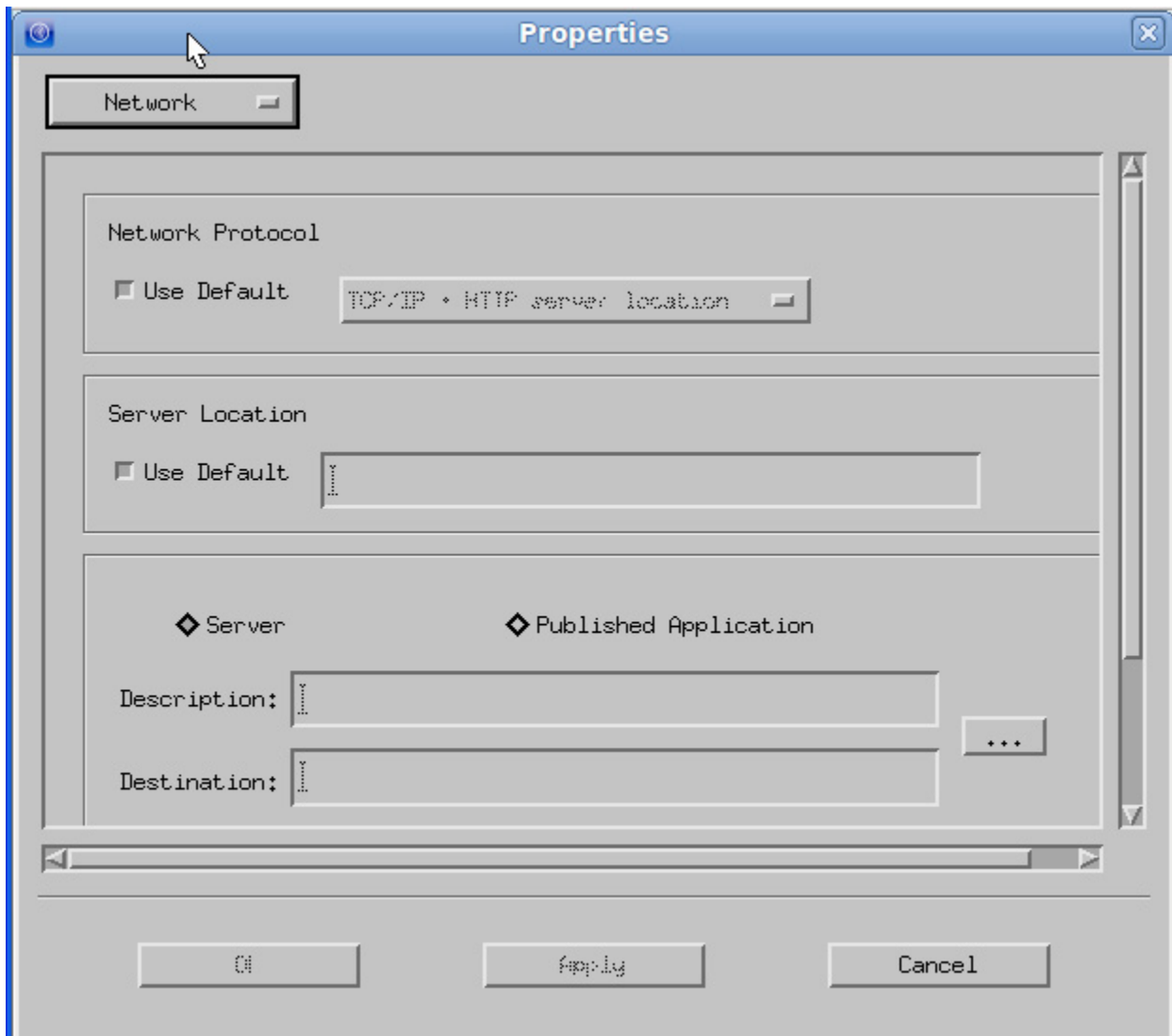
Users can create two types of connections to servers:

- A connection to a *server desktop* lets a user access the desktop of a server. The user can run any applications available on the desktop, in any order
- A connection to a *published application* lets a user access a predefined application and its associated environment. Published applications can be run in seamless mode, where the applications appear to the client as if they are running locally, each application running in its own resizable window.

1. On the **Connections** menu, click **New**.



2. Click **Server** or **Published Application**.



3. Do one of the following:

For a server desktop - type the name or IP address of the server or click **Browse** to select from a list of servers.

For a published application, type the name of the published application or click **Browse** to select from a list of published applications.

4. If you type the name of the server or published application, type a unique description for the entry in the **Description** box. The description is used to identify the connection in the main client window.

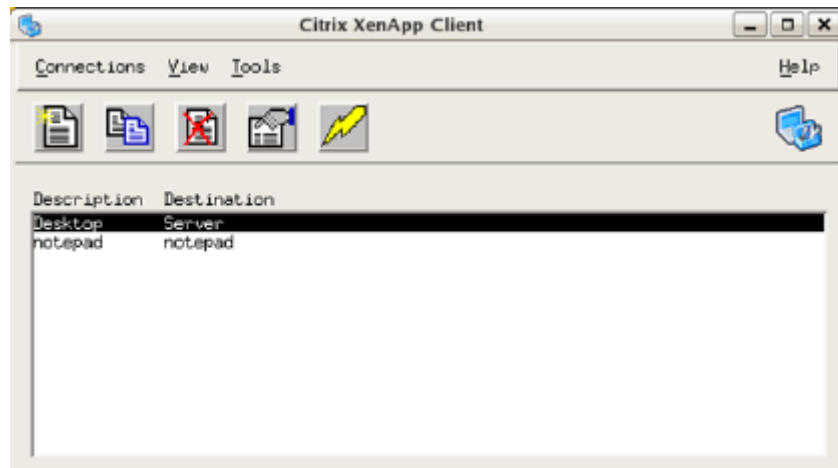
If you select a server or published application from the list, a default description is added automatically.

5. Click **OK** to save the entry. Alternatively, to save your changes but retain the current page, click **Apply**.

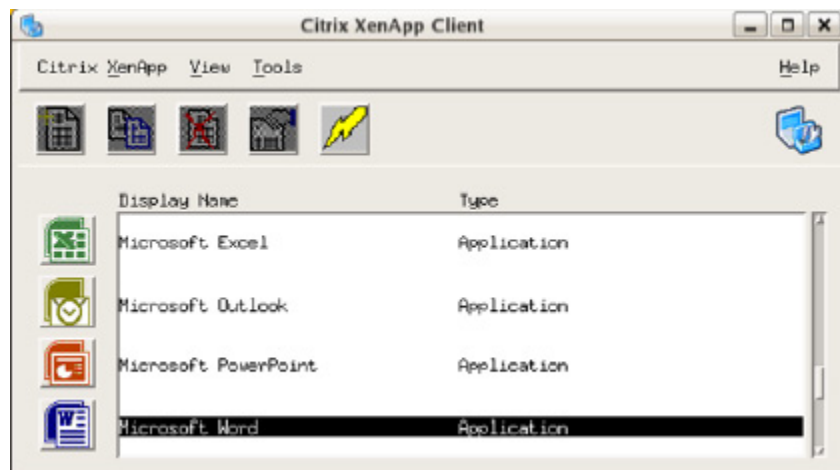
After you create a connection entry with the appropriate network connection properties set up, the description appears in the main client window.

Viewing Connection Entries

By default, the main client window displays the Connection view, which lists all the connection entries that a user created, including connections to published applications and server desktops. Immediately after installing the client, this list may be empty.



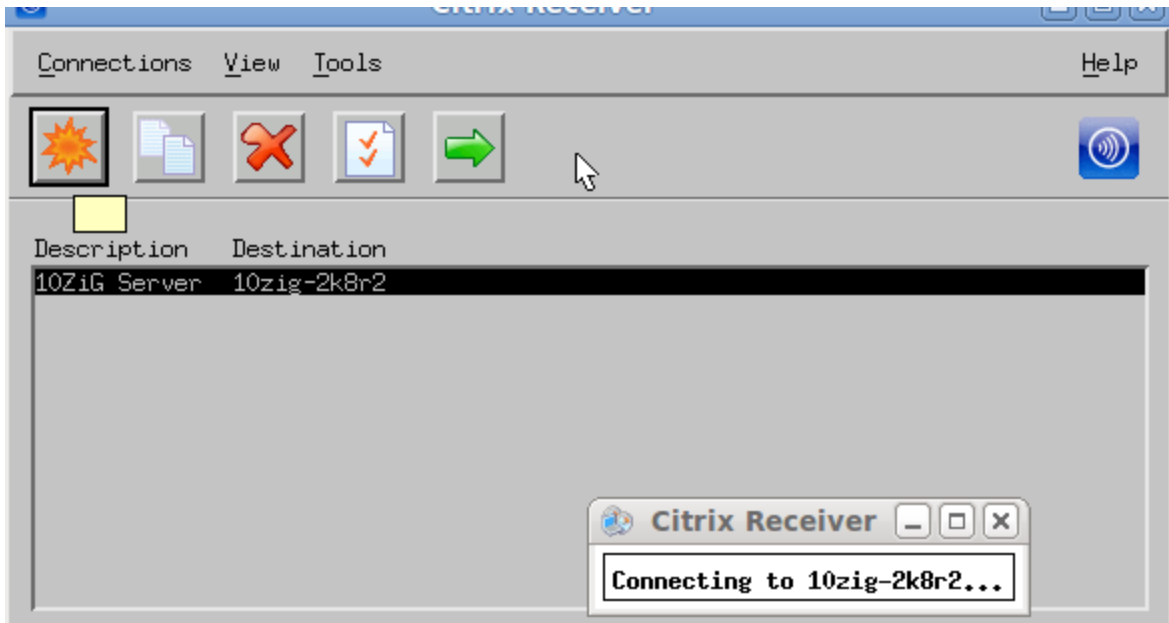
The above screen capture shows the Connection view of the main client window, which lists the connection entries users create, by description and server name.



The above screen capture shows the Citrix XenApp view of the main client window, which lists the published resources available to the user, by name and type.

Open a connection

Select the name of the connection you want to open

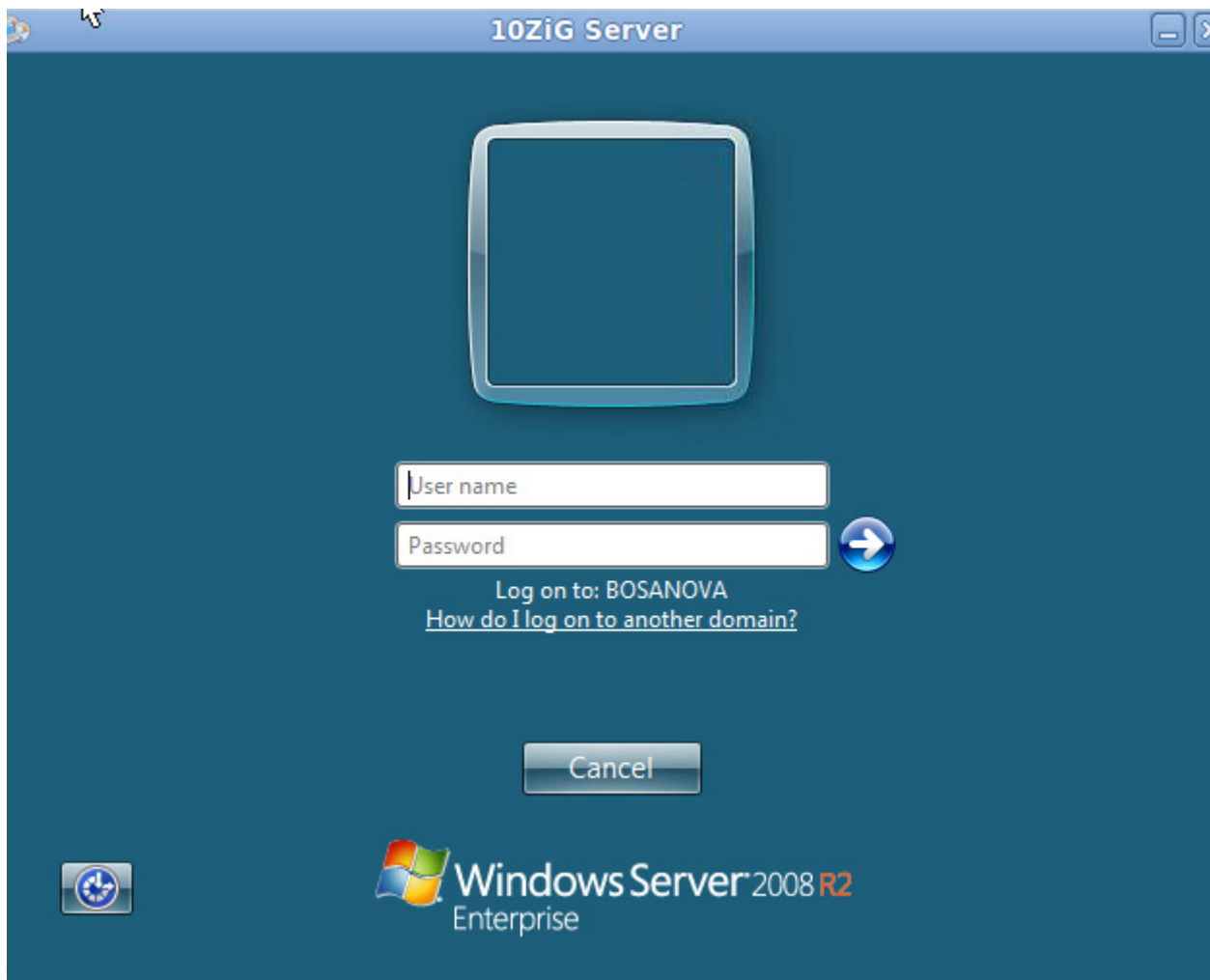


On the **Connections** menu, click **Connect**

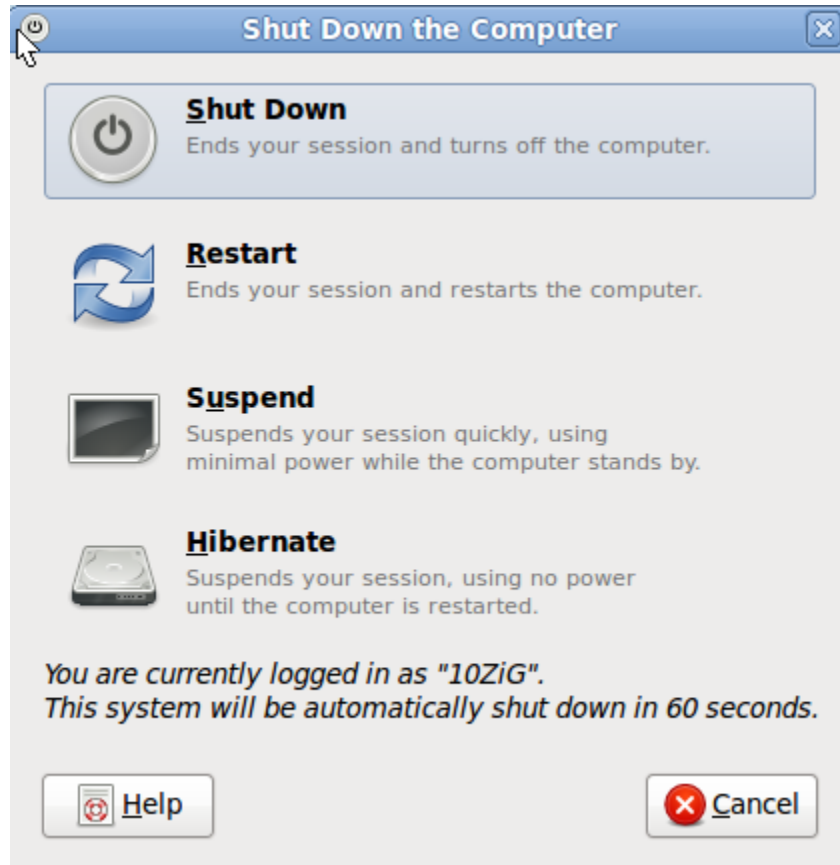
OR

Click the **Connect** button on the toolbar

The Citrx Receiver connects the server and presents the desktop.



To exit the USB Linux Desktop press CTRL+ALT+DEL



10ZiG Technology Limited

Headquarters US

23309 N 17th Dr - Ste 100
Phoenix, AZ 85027
Phone 866-864-5250 • Fax 623-516-8697
support@10zig.com
sales@10zig.com
www.10zig.com

Headquarters UK

10 ZiG Technology Limited
Action Business Centre
Swan Street
Leicester LE3 5AT
Phone 44 1509 276252 • Fax 44 1509 276253
support@10zig.eu
sales@10zig.eu
www.10zig.eu

June 11, 2010