

10ZiG Imaging Utility

The 10ZiG Image Utility creates a bootable USB thumb drive to be used to restore an image on a 10ZiG thin client. The size of the USB thumb drive must be at least double the size of the DOM (flash drive) on the thin client.

NOTE: Sandisk USB drives are not supported when using our USB Image Utility.

Creating USB Thumb Drive

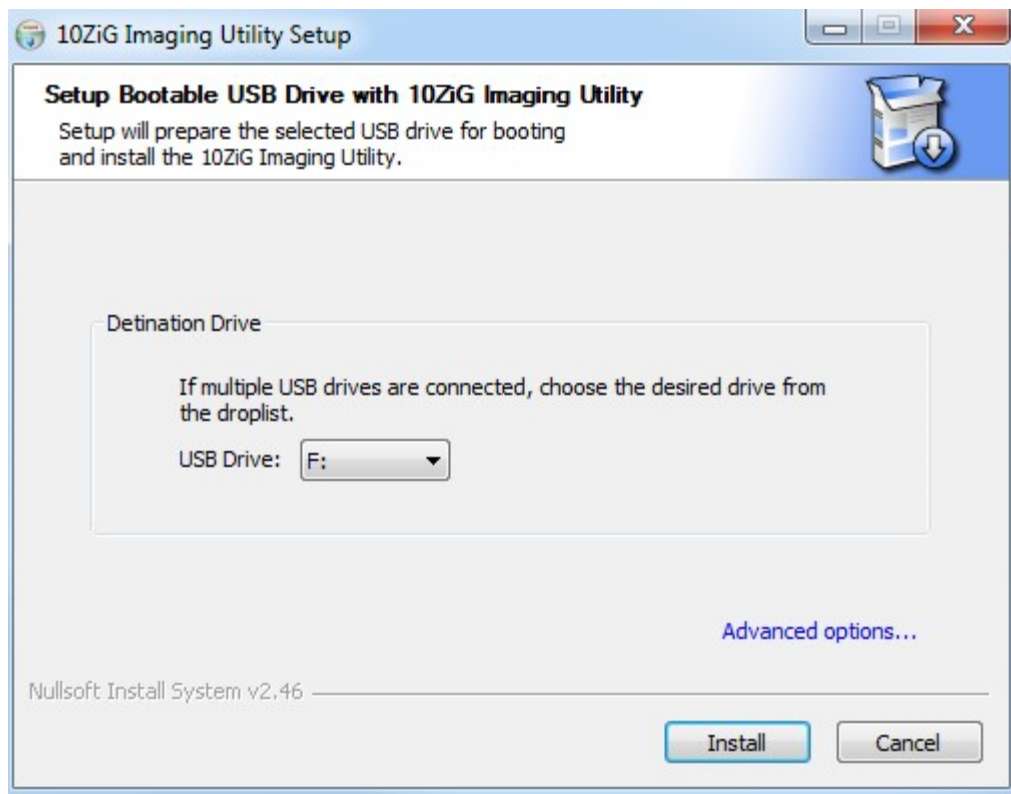
On a Windows PC download and run the executable

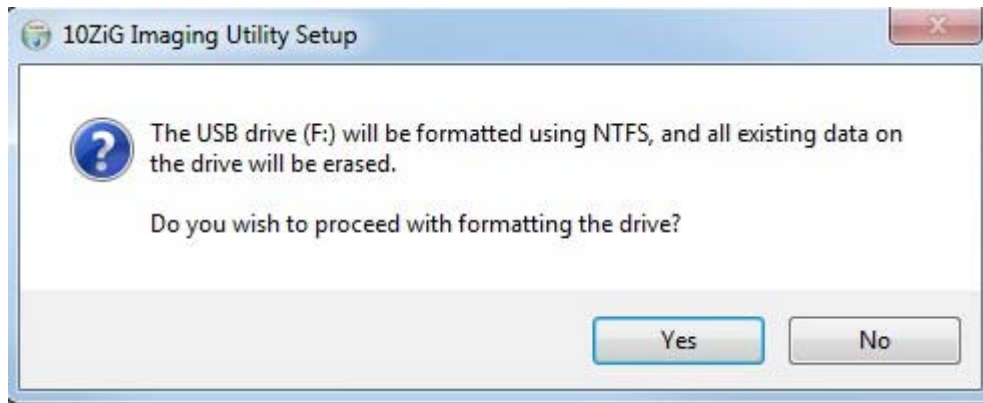
http://www.10zig.com/thinclient/downloads/10zig_manager/TzImgUtil_setup.exe



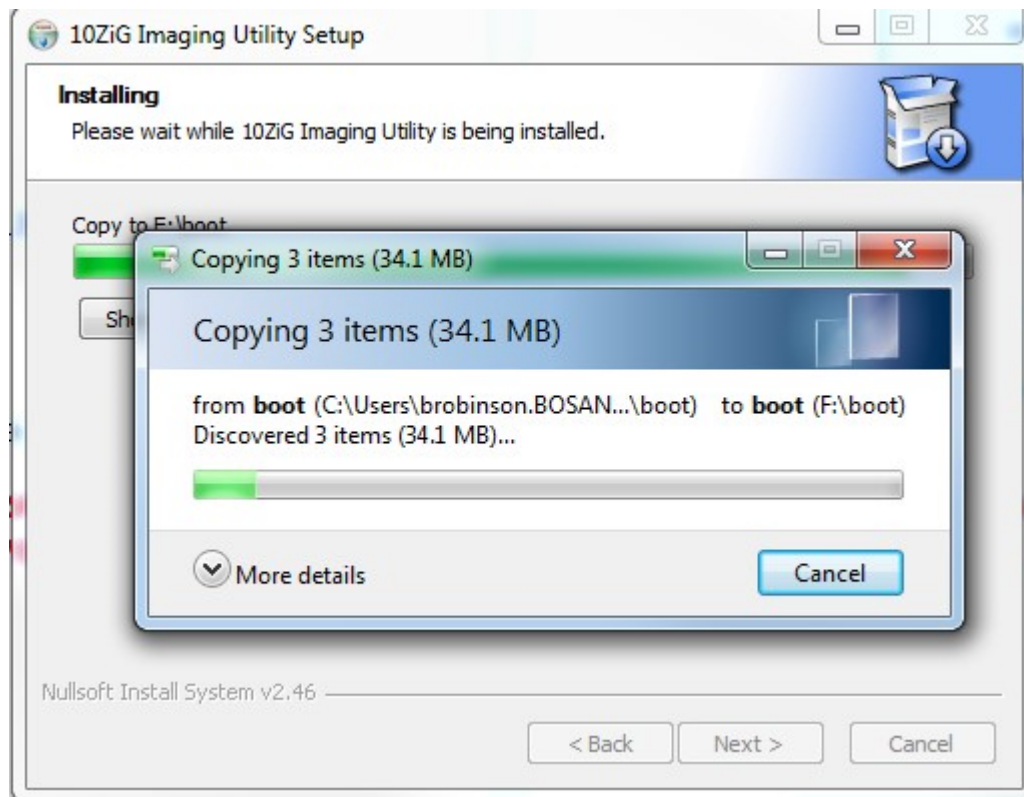
Select the correct USB Drive to create the bootable USB thumb drive and select **Next**

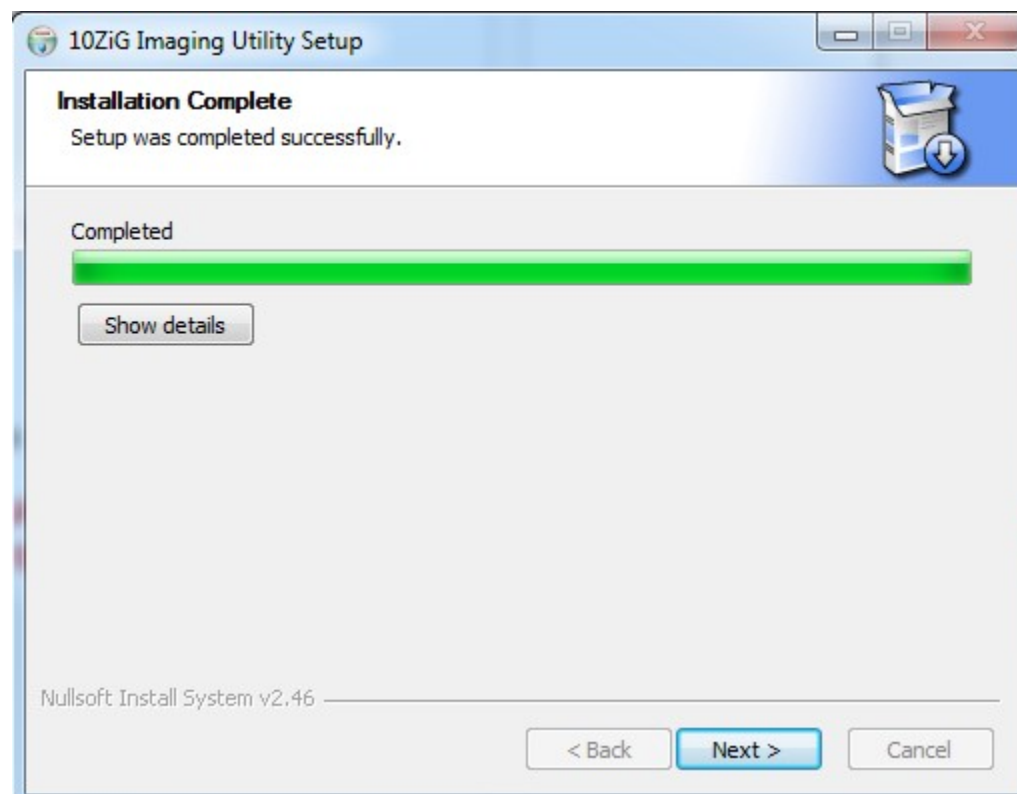
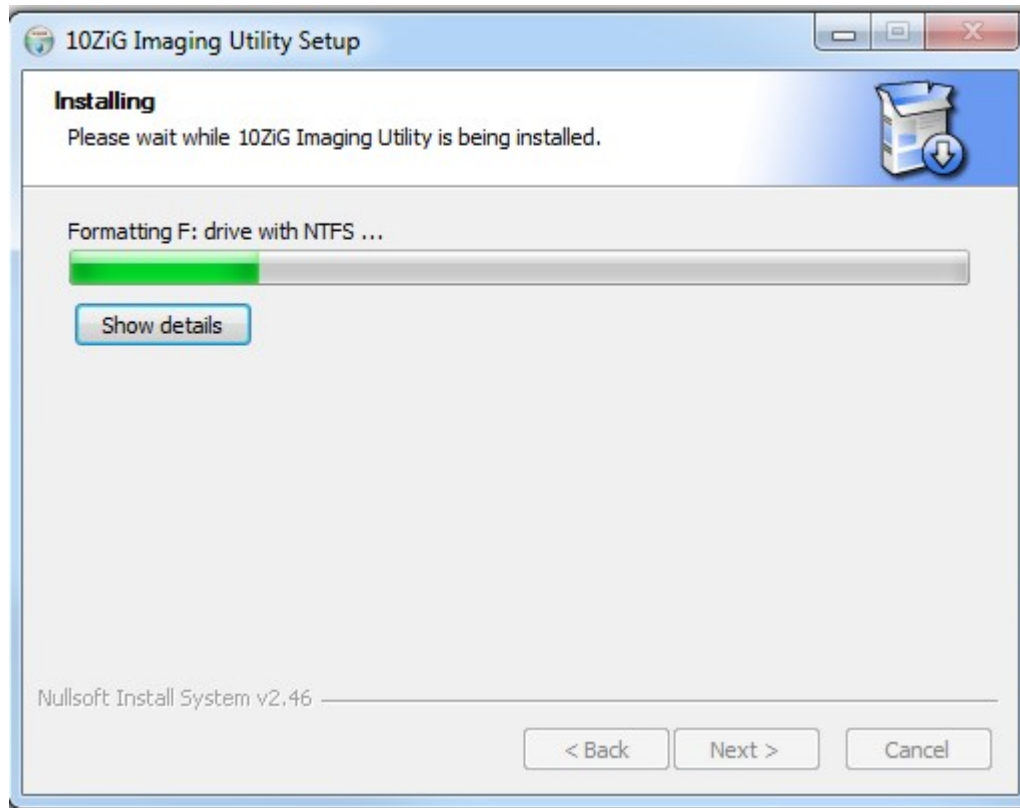
**PLEASE BE AWARE, THIS UTILITY WILL ERASE
EVERYTHING ON THE USB THUMB DRIVE**



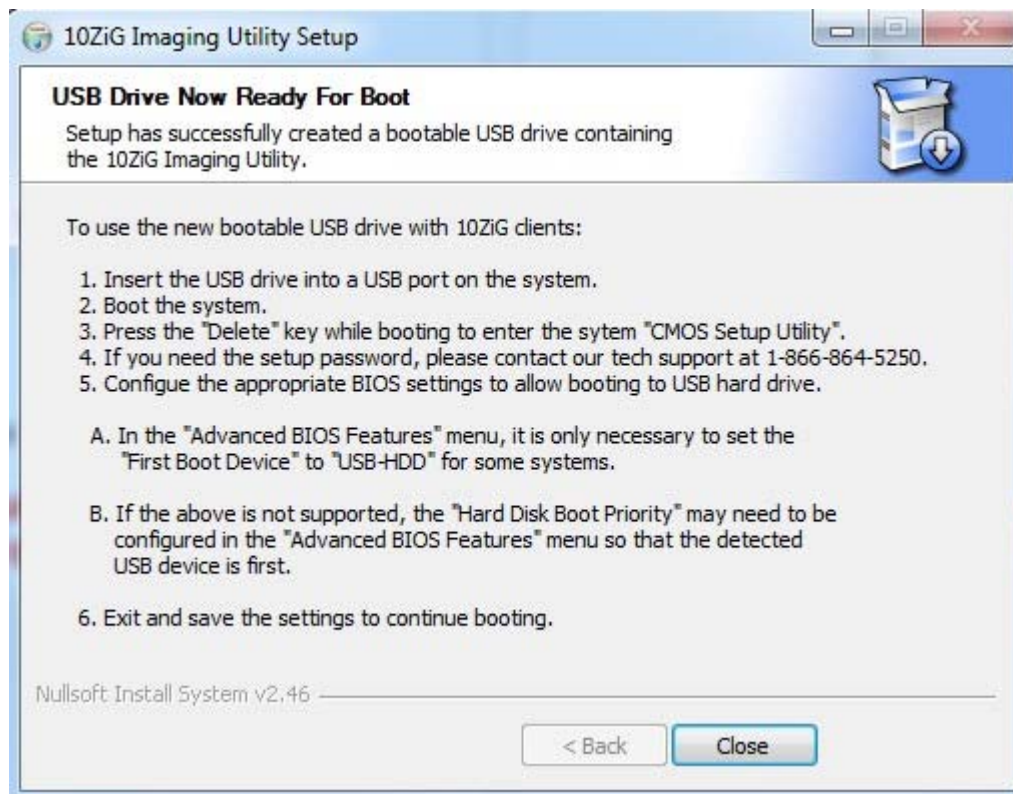


!! REMINDER !!
FORMATTING WILL ERASE EVERYTHING
ON THE USB THUMB DRIVE

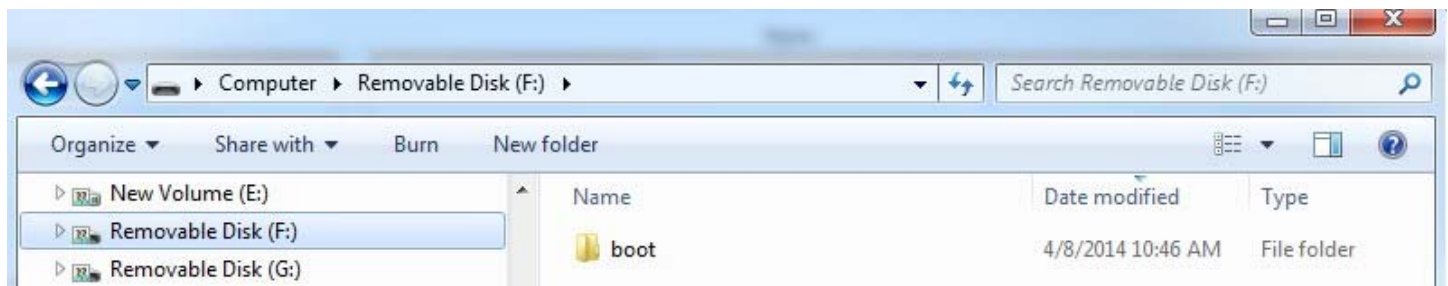




The setup completes. Select **NEXT** and then **CLOSE**



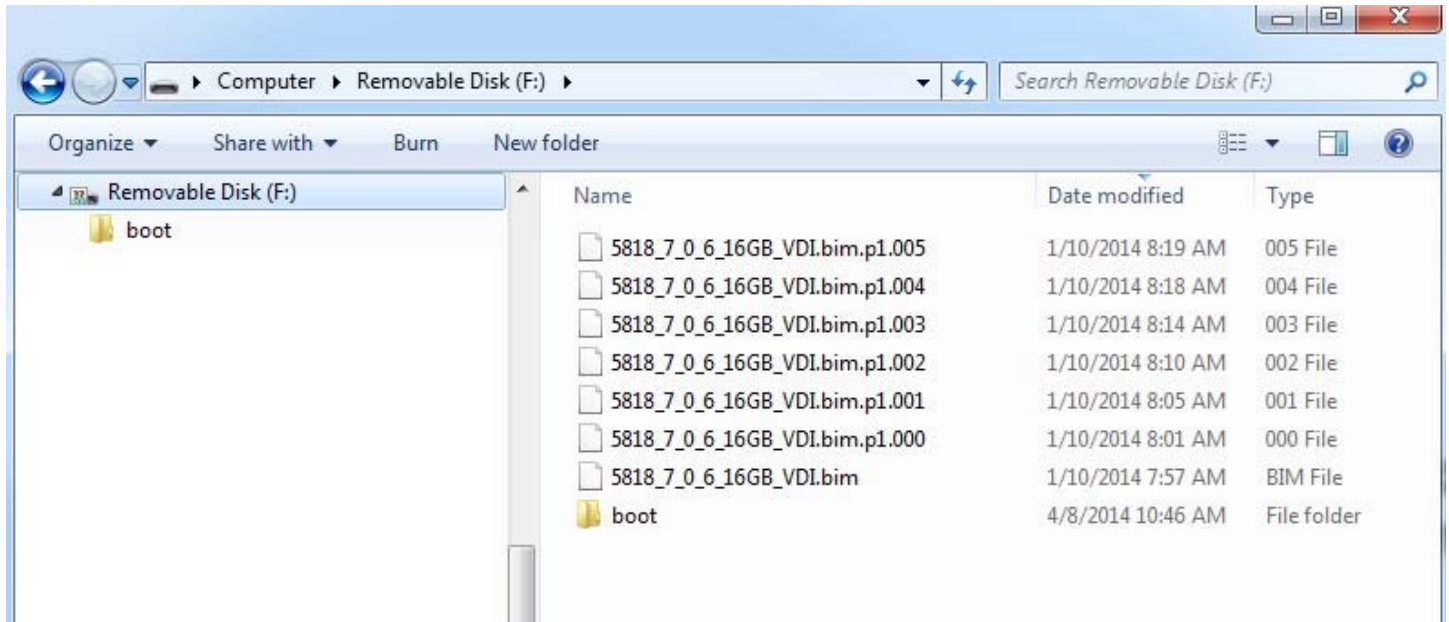
The USB thumb drive will contain a boot folder as seen below:



Copying Image to USB Thumb Drive

Copy the binary or compressed image to the USB thumb drive.

The example below is a compressed image that was backed up via the 10ZiG Manager and then copied to the thumb drive for purposes of restoring the image.



Restoring or Backing up an Image from a USB Thumb Drive

To set the Disk Boot Priority to USB the USB thumb drive must be in the thin client when booted into the BIOS.

BIOS password is 10ZIG

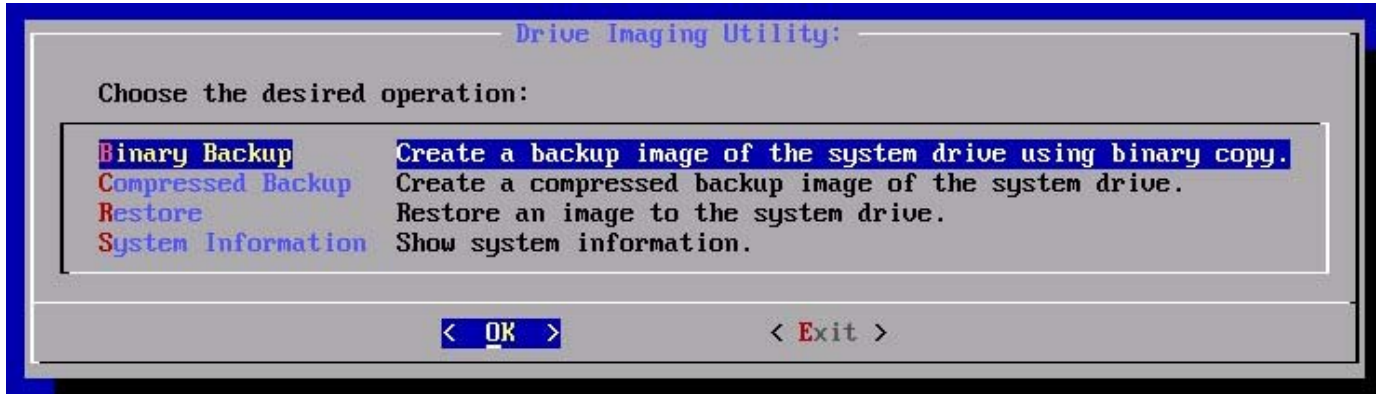
Hardware model **55XX** – press DEL to enter BIOS – Advanced BIOS Features – set Hard Disk Boot Priority – move USB to top of the list and set the first boot to USB-Zip. F10 to Save and Exit. You can then use the F12 key to access the boot menu and select the USB thumb drive.

Hardware model **56XX** – boot the thin client with the USB thumb drive in it and press DEL to enter BIOS – Advanced BIOS Features – Hard Disk Boot Priority – move the USB to the top using the + or - key. F10 to Save and Exit. You can then use F12 to access the boot menu to select the USB thumb drive.

Hardware model **58XX, 58XXq, 44XX and 78XXq** – boot the thin client with the USB thumb drive in it and press ESC to enter the BIOS – Select SCU – enter password and continue to the boot options. Select Legacy – Boot Type Order – Find USB and using the + or – keys move USB to the top. Save and Exit – when the unit starts to boot press the ESC key again – go into Boot Manage and select the USB thumb drive.

Hardware model **68XX** – boot the thin client with the USB thumb drive in it and press F2 to enter the BIOS - enter password and continue. Go to Boot and then to Legacy and then Boot Type Order and make sure USB is at the top of the list. F10 save and exit. Press F12 to access boot menu and select the USB thumb drive.

The thin client will boot from the USB thumb drive to a Drive Imaging Utility menu.



Drive Imaging Utility

Choose the desired option:

Binary Backup – create a backup image of the system drive using a binary copy.

Compressed Backup – Create a compressed backup image of the system drive.

Restore – Restore an image to the system drive

System Information – Show the System Information

Each option will present a second menu to select restoring or saving the image to an attached USB thumb drive or to the network share (SMB)

A directory is presented – select the desired image to restore. For binary image it will have the extension .bin for compressed it will have the extension .bim and .bim.xx.



10ZiG Technology Limited

Headquarters US
23309 N 17th Drive – Ste 100
Phoenix, AZ 85207

Phone 866-864-5250
Fax 623-516-8697

support@10zig.com
sales@10zig.com
www.10zig.com

Headquarters UK
Unit S2, Troon Way Business Center
Humberstone Lane
Leicester LE4 9HA
UK

Phone 44 116 2148650
Fax 44 116 2148651

support@10zig.eu
sales@10zig.eu
www.10zig.eu

December 7, 2016