

# 8848 *Zero Client*



## **10ZiG Linux V10 User Guide**

## About This Guide

Thank you for choosing from the 10ZiG Technology series of thin clients which are specifically designed for power users in an office environment. They feature a powerful, yet simple and affordable solution to virtual desktop computing in a fashionable and sleek design.

In this User Guide, you will find everything you need to quickly begin using your new device. Please be sure to verify with your network administrator that your network is prepared for the configuration of your new device.

### Declaration of Conformity

It is hereby declared that this device is in conformity with the essential requirements, and other relevant provisions of the CE and the FCC.



### CE Mark Warning

This is a class B device, in a domestic or office environment. This product may cause radio interference, in which case the user may be required to take adequate measures.

### Waste Electrical and Electronic Equipment (WEEE) Warning

To potentially avoid adverse effects on the environment, and human health, as a result of the presence of hazardous substances in electrical and electronic equipment, end users of electrical and electronic equipment should understand the meaning of the crossed-out wheeled bin symbol. Do **NOT** dispose of WEEE as unsorted municipal waste as municipalities must collect WEEE separately.

# Table of Contents

GETTING STARTED .....	1
<b>PACKING LIST</b> .....	1
<b>INITIAL SETUP</b> .....	1
<b>INITIAL BOOT-UP</b> .....	1
CONTROL PANEL.....	2
<b>INTRODUCTION</b> .....	2
<b>CONTROL PANEL</b> .....	2
System: .....	3
<b>Security Settings</b> .....	3
<b>System Logs</b> .....	3
<b>System Information</b> .....	4
General.....	4
Packages.....	4
Advanced.....	4
<b>VNC Settings</b> .....	5
<b>Time &amp; Date</b> .....	6
Clock Tab .....	6
Time Zone Tab .....	6
Time Server Tab.....	7
<b>Certificates</b> .....	7
Hardware:.....	9
<b>Network Configuration</b> .....	9
For Wireless enabled Units Only .....	9
<b>Display</b> .....	13
<b>Smart Card Service</b> .....	14
<b>Keyboard</b> .....	15
<b>Sound</b> .....	16
<b>USB Devices</b> .....	16
<b>Mouse</b> .....	17
SUPPORT .....	18
<b>SERIAL NUMBER</b> .....	18

## Getting Started

### Packing List

The following components are included in the package:

- Thin Client Device
- Stand
- 12 VDC Power Adapter with Cord

**Optional equipment that may be included:**

- USB Wheel Mouse
- USB to PS2 Adapter
- SVGA to DVI Adapter
- Monitor Mount Kit (may include optional video cable)
- SVGA and DVI splitter cable
- Wireless Network Adapter and Antenna
- Quick Installation Guide & Management Software CD

Check this list before installation to ensure that you have received each item ordered. If you are missing any items, please contact technical support.

### Initial Setup

**To setup the device for initial use :**

- Attach the Stand (if desired)
- Connect a Keyboard, Monitor and Mouse
- Connect to a Network and a Power Source

### Initial Boot-up

Upon initial boot-up, the unit will attempt to configure the network settings using DHCP. Once the unit has obtained an IP address, you may continue through the remainder of the setup process by filling in the required information based on your preferences and geographical settings. During the setup wizard, you will be asked to fill in your country location, the time zone you are in, and the current date and time.

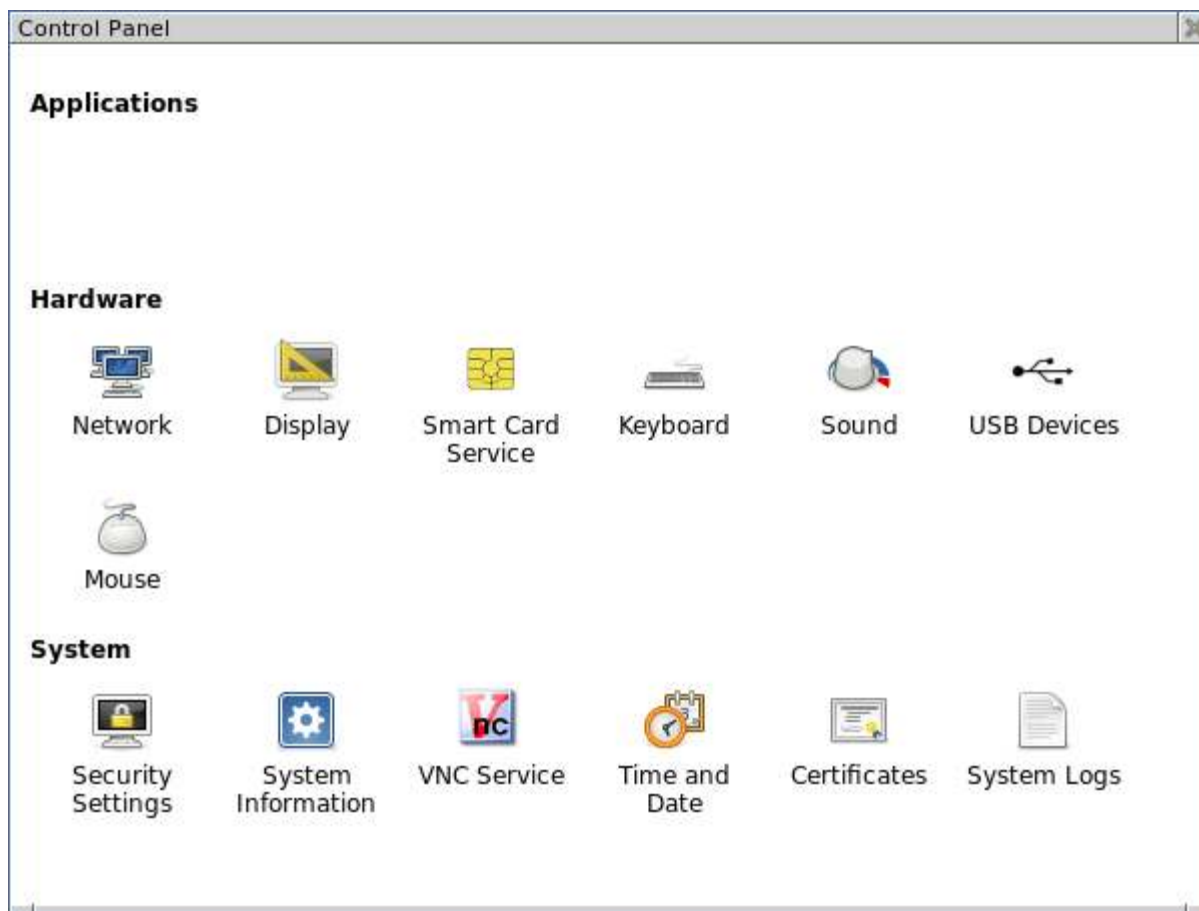
## Control Panel

### Introduction

This section provides the user with instructions for the hardware configuration of the Linux-based thin client and explains the various utilities used to accomplish these tasks. Typically, a thin client is configured locally and then used as a template to configure other units. These saved configuration templates may then be pushed out to additional thin clients using the optional 10ZiG Server Manager.

### Control Panel

The **Control Panel** is where you will find easy access to all of the settings you wish to configure for the unit. It can be easily accessed by exiting the application that was preloaded onto the unit and selecting the **Settings...** button. **NOTE:** For more information about this, please see the 8848 guide specific to your application.



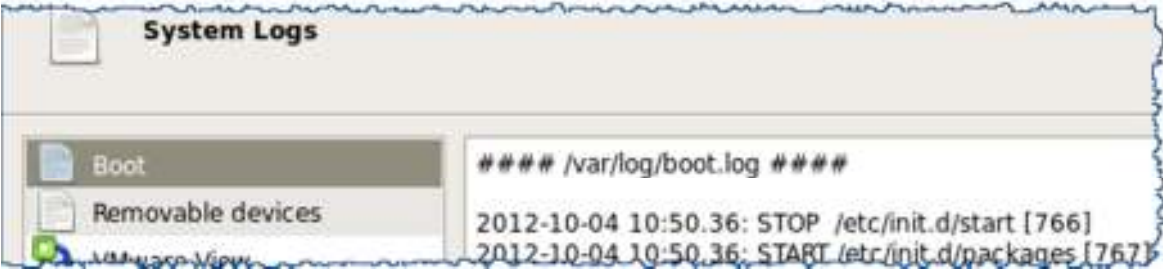
### System: Security Settings

The **Security Settings** allows the user or systems administrator to password protect access to the **Control Panel's** various functions and configurations.



### System Logs

Selecting a Log file from the left pane will enable you to view it in the right pane. **Please Note:** If you are asked by a 10Zig Support technician, you may select the log file and then Click on the **Send Log** button at the bottom of the window to copy the file automatically to the 10Zig FTP site (a working connection to the Internet is required).



## System Information

### General

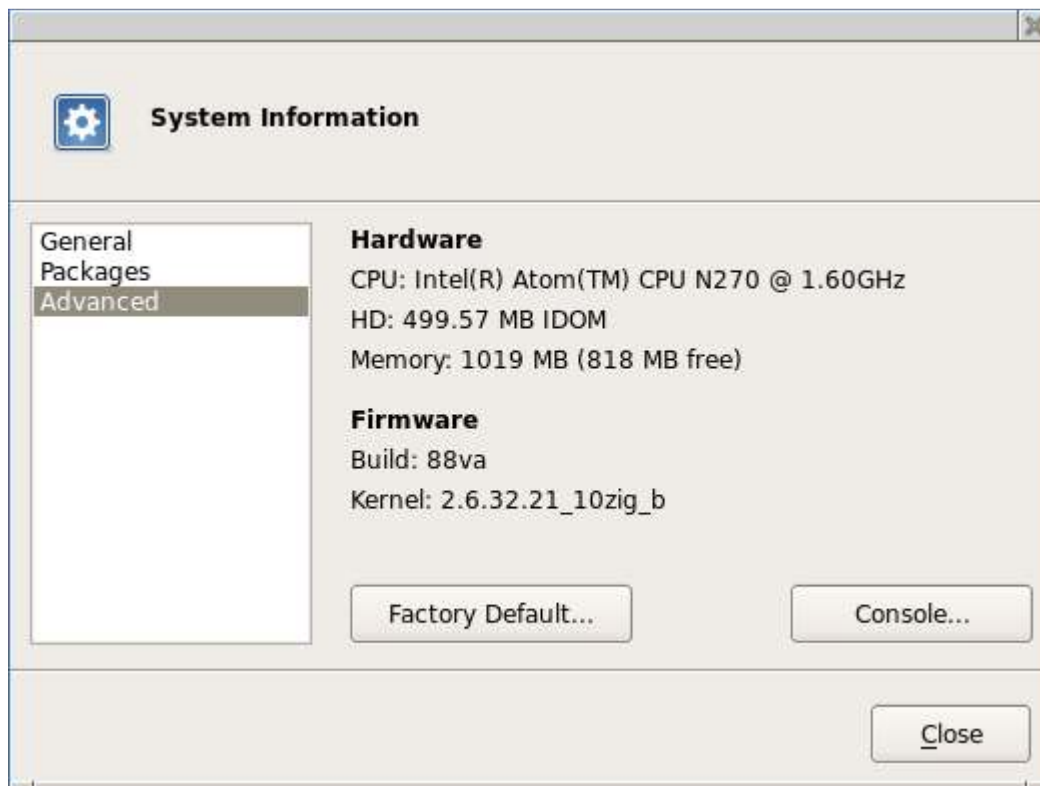
The **General** screen displays information about the current software version installed as well as information about the Model and Name of the unit. Here you may change the name using the **Change Name...** button if desired.

### Packages

Selecting **Packages** will show the currently installed Linux packages on the unit.

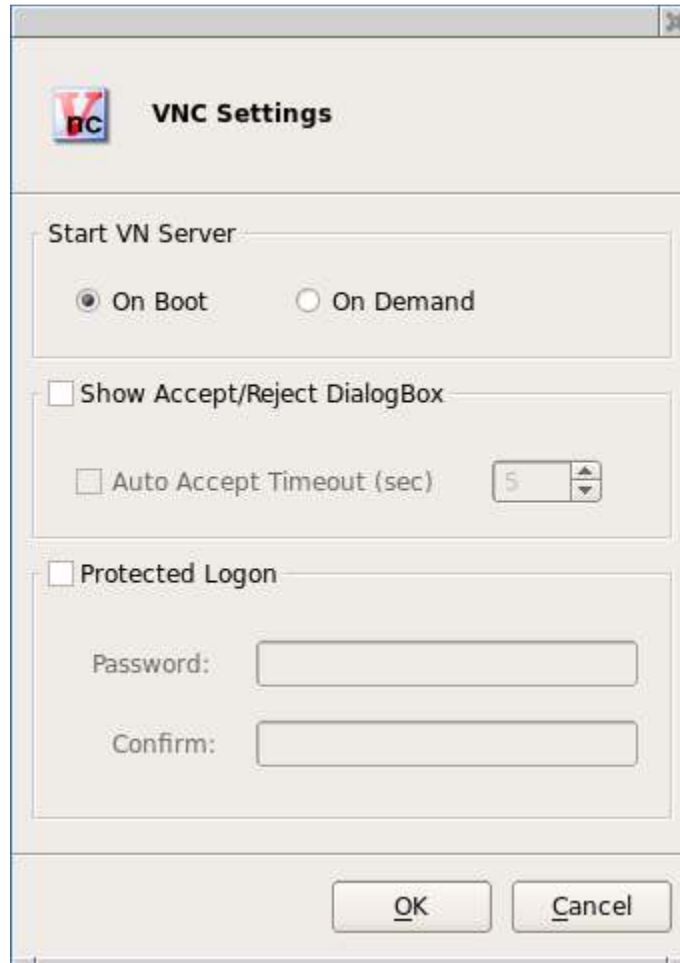
### Advanced

The **Advanced** screen shows the Hardware and Firmware information as well as providing access to the Console or Factory Default options. Selecting the **Factory Default...** button will delete all saved parameters and return the unit back to the factory default state. Factory default may also be reset from the unit's keyboard by pressing **SHIFT-CTL-ALT-F** or from the 10ZiG Manager utility by right clicking on the unit and selecting **Configuration – Reset to Factory Default**.



## VNC Settings

Here you may edit the settings used to remotely connect to the unit using VNC (Virtual Network Computing). Options include: when the server should start, whether or not to prompt the user for permission to connect to the unit, and the option to password protect any connection from a remote source.



The screenshot shows a window titled "VNC Settings" with a VNC logo. The window contains the following controls:

- Start VN Server:** Two radio buttons, "On Boot" (selected) and "On Demand".
- Show Accept/Reject DialogBox:** An unchecked checkbox.
- Auto Accept Timeout (sec):** An unchecked checkbox followed by a spin box containing the number "5".
- Protected Logon:** An unchecked checkbox.
- Password:** A text input field.
- Confirm:** A text input field.
- Buttons:** "OK" and "Cancel" buttons at the bottom.

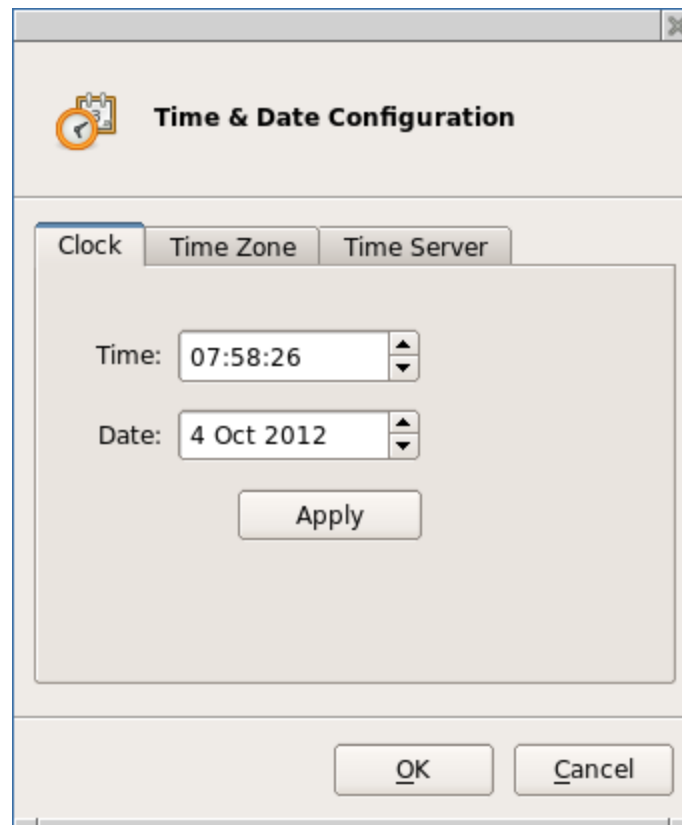


## Time & Date

The Time & Date utility allows you to set the date and time, select the appropriate time zone, and enable an NTP (Network Time Protocol) Time Server.

### Clock Tab

The **Clock** tab allows the user to set the current date and time. **Please Note:** You must Click the **Apply** button before exiting or all of your changes made here will be lost.



### Time Zone Tab

Here you may edit your Time Zone if the one selected during the initial **Setup Wizard** is no longer correct.



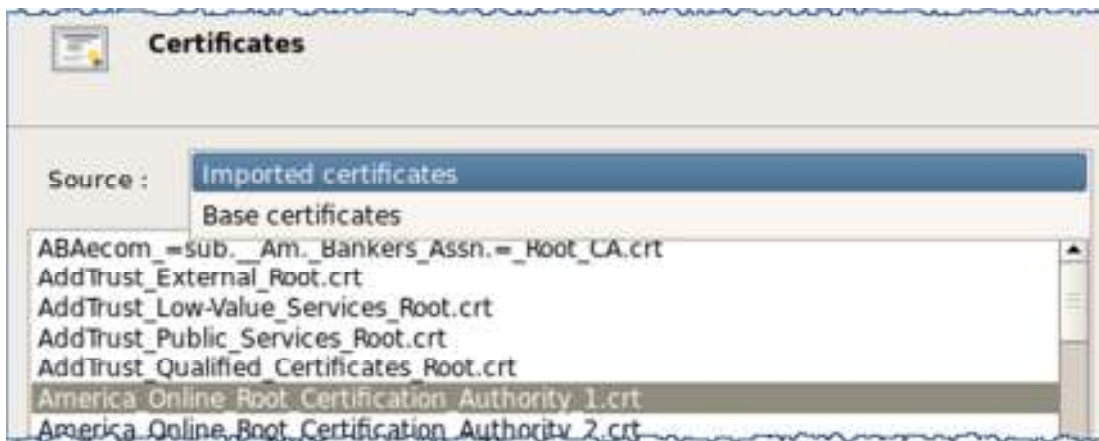
### Time Server Tab

Here you may select the **Use time server** checkbox and enter a valid NTP Server address if you would like the unit to automatically update the Date & Time.



### Certificates

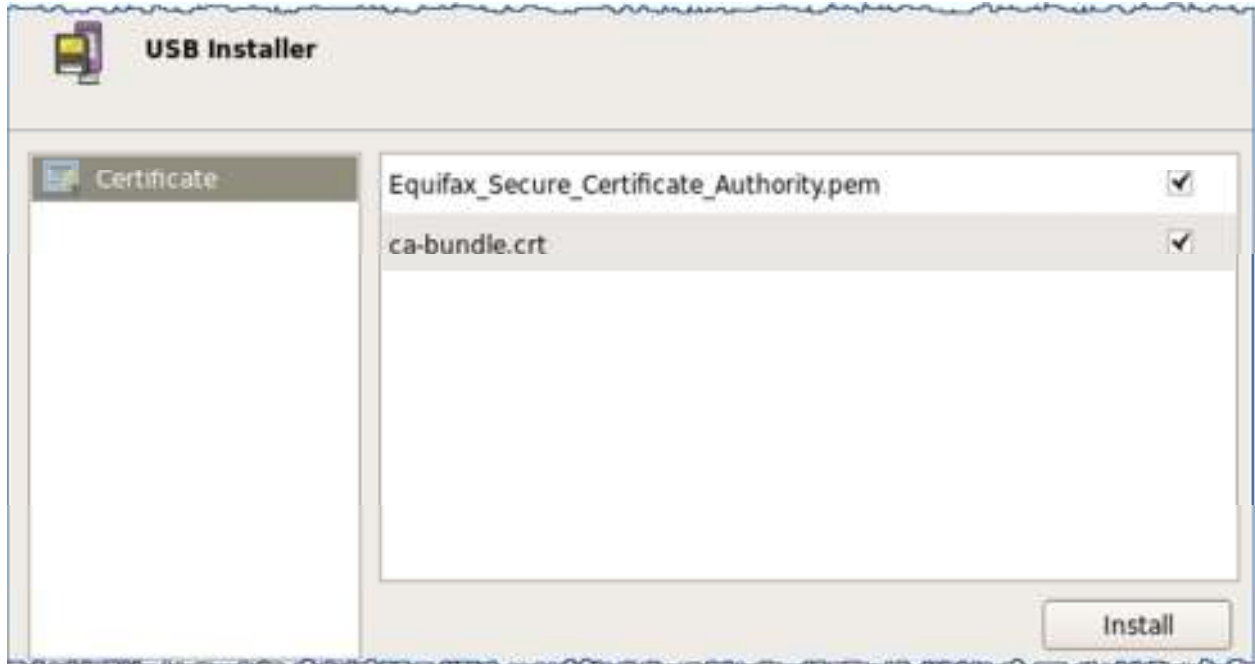
The **Certificates** window allows you to view **Imported** and **Base** certificates installed on the unit.



To view a certificate, select it from the list and then Click on the **Show** button.

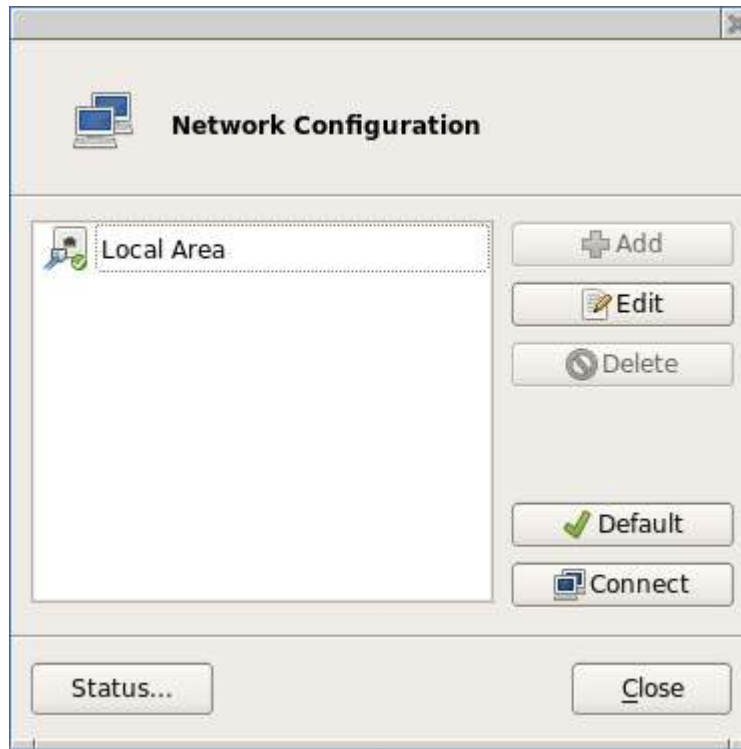


To import a certificate, insert a USB drive into the unit that contains a **.crt** or **.pem** file in the root directory. This will automatically open the USB Installer window. Here you may select the certificate(s) you would like to import into the unit. When finished, you will need to reboot the unit to view the newly imported certificate(s).



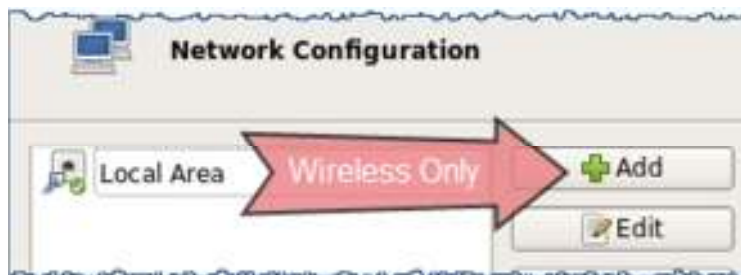
## Hardware: Network Configuration

Here you will find options to configure your network settings. If only one type of connection is available, it will be automatically set to **Default**.



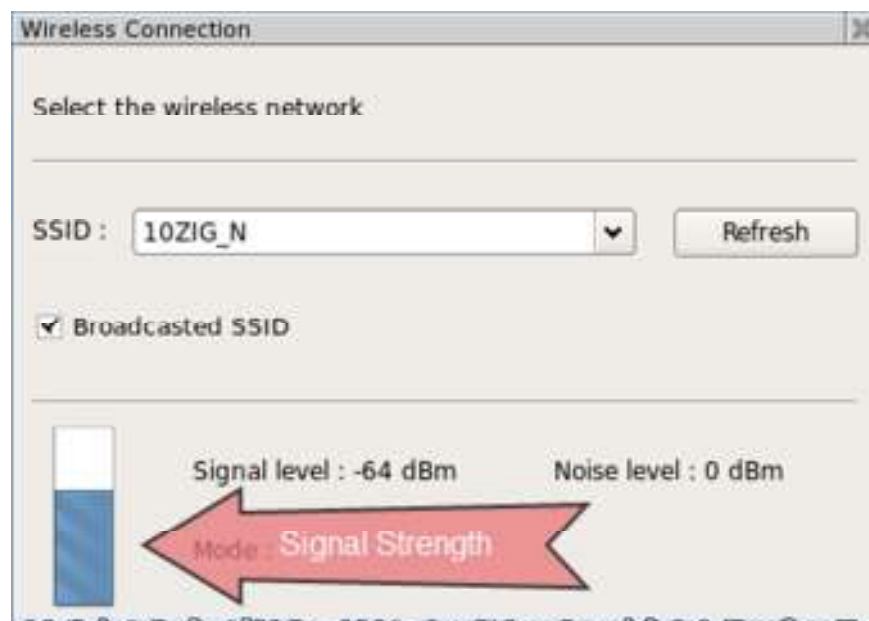
### For Wireless enabled Units Only:

If the unit is enabled with a 10Zig **Wireless** network interface, the **Add** button will become selectable and you may then continue to configure your Wireless connection.

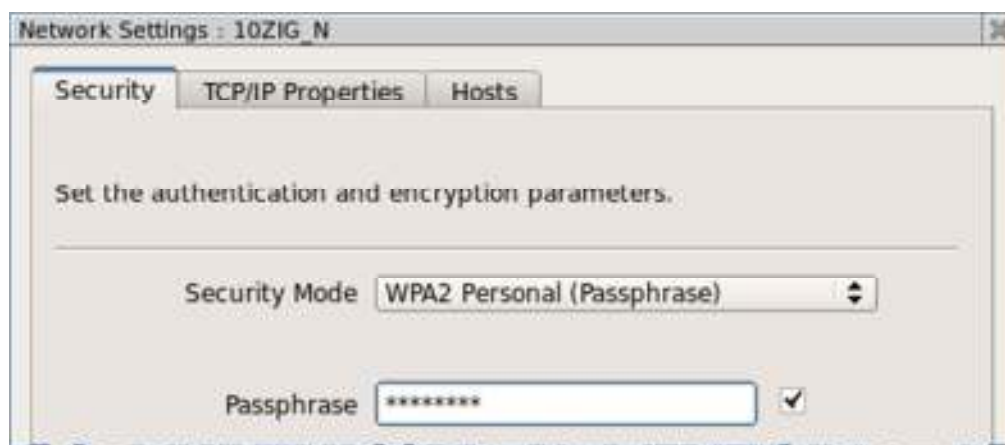


**For Wireless enabled Units Only (Cont.):**

Clicking the **Refresh** button will force the unit to scan for any available broadcasted wireless networks and to display the results in the **SSID**: drop down menu. Selecting an SSID from the drop down will display its current Signal Strength

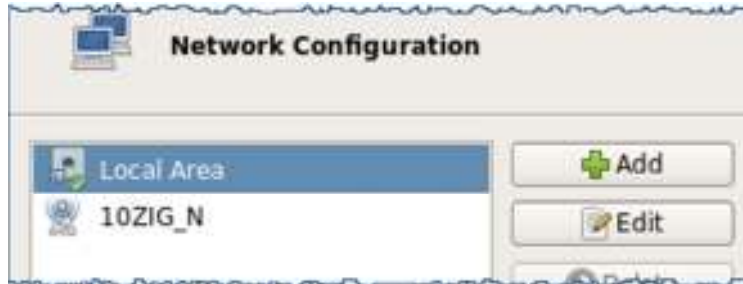


After selecting the Wireless Network to connect to and clicking **OK**, the Network Settings Window for the connection will open. Here you may select your **Security Mode** from the drop down menu and then enter your **Passphrase** if required. Additionally, you may edit your **TCP/IP Properties** and **Hosts** for this connection from the Tabs here as well.

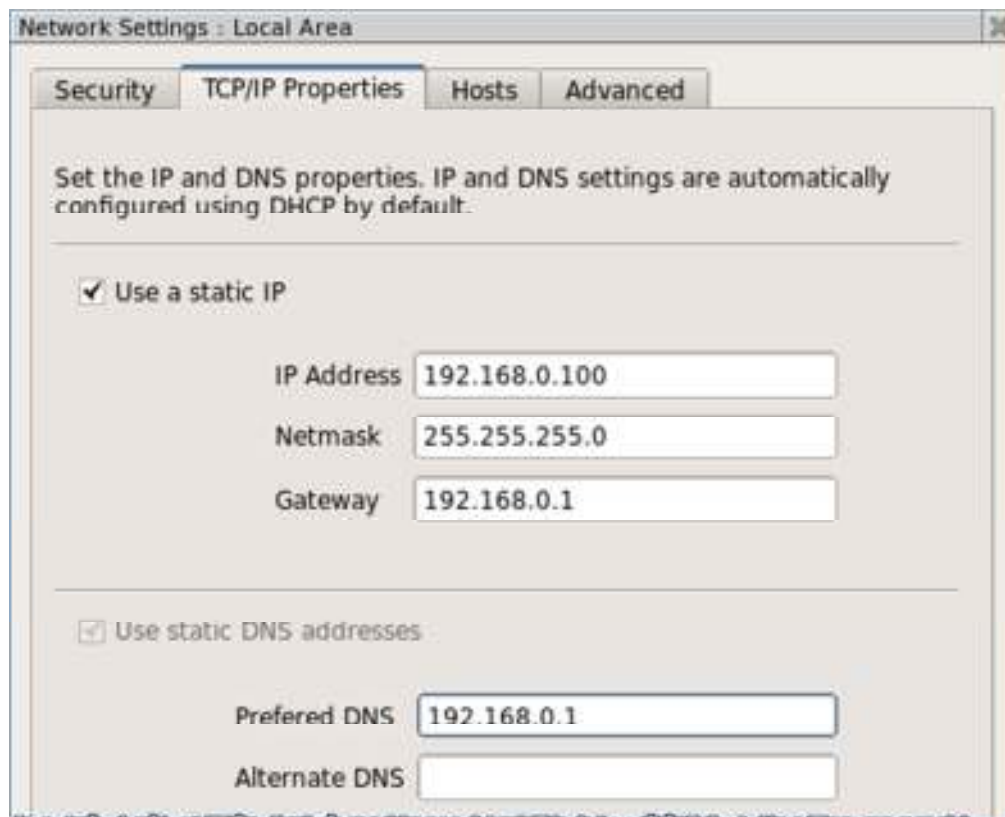


**From the Network Configuration window:**

Highlighting a connection and then clicking the **Edit** button will display additional network settings for the selected connection.



Selecting the **TCP/IP Properties** tab for the connection will allow you to manually configure your IP settings with a **Static IP Address**.

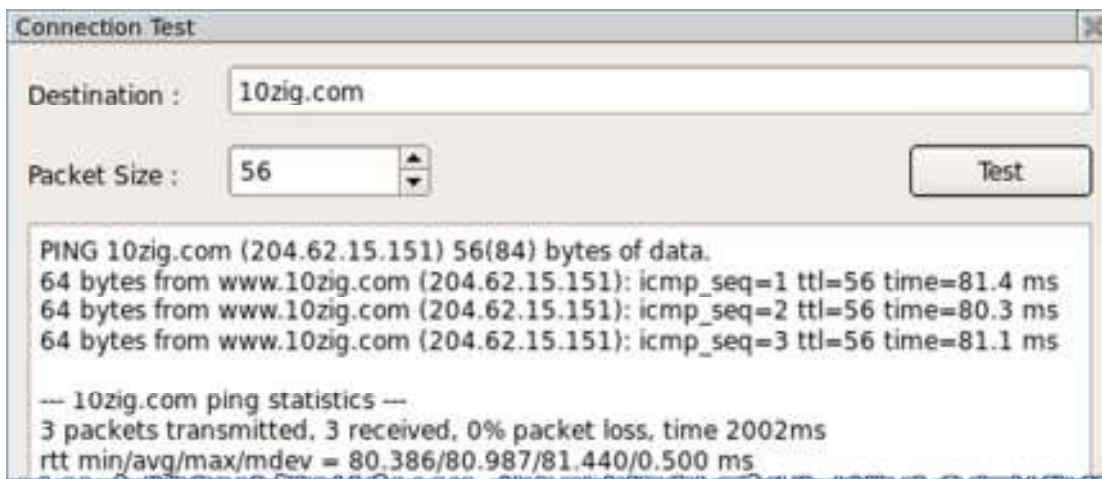


**From the Network Configuration window:**

Selecting the **Status** button will display your current network connection status.



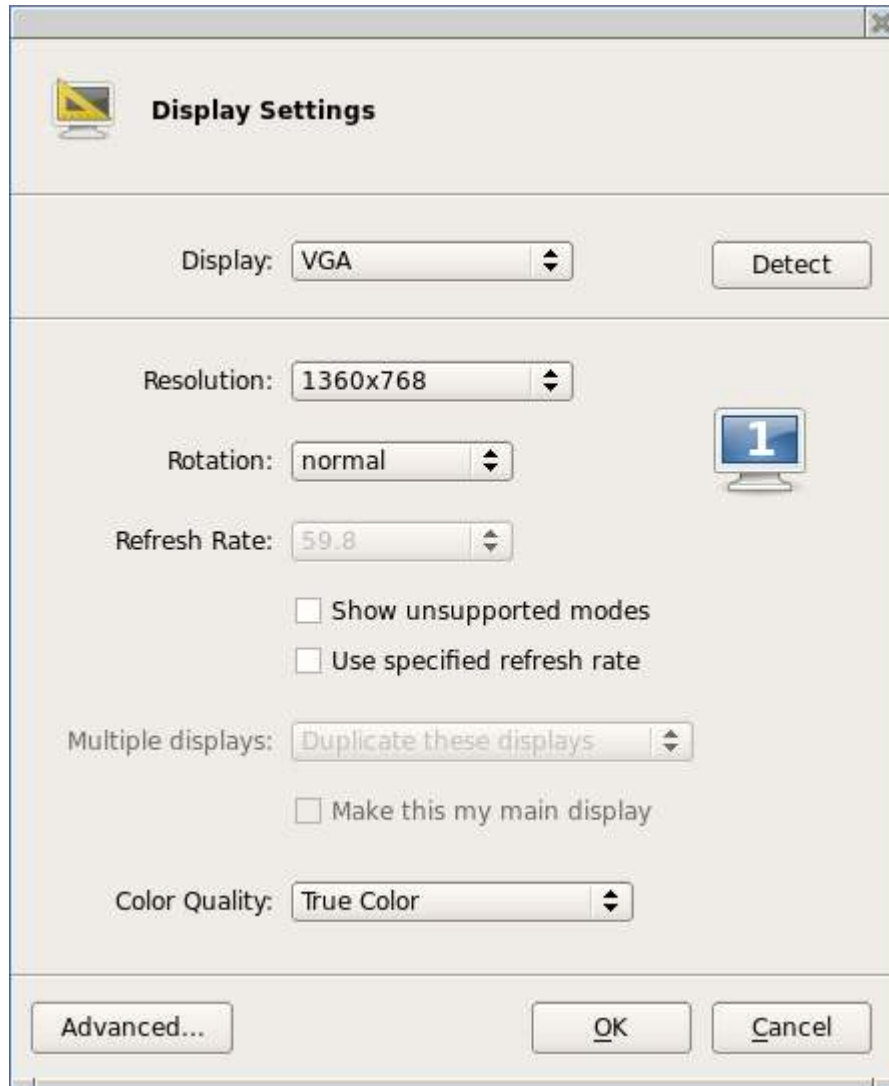
Selecting the **Test...** button opens the **Connection Test** window where you may chose a destination to ping to.



## Display

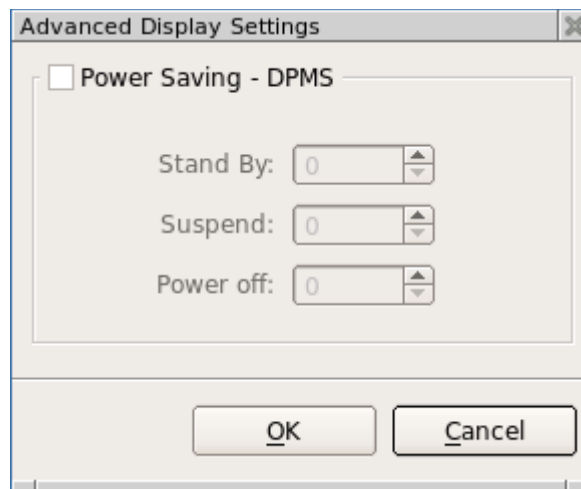
The Display Settings window allows you to configure your screen resolution along with the refresh rate and the color quality. Other options here include rotation and support for multiple displays, if detected.

**NOTE:** When multiple displays are detected, you will be given the option to select **Make this my main display** and **Extend these displays** under **Multiple displays**. To detect or reset detection, click on the **Detect** button.



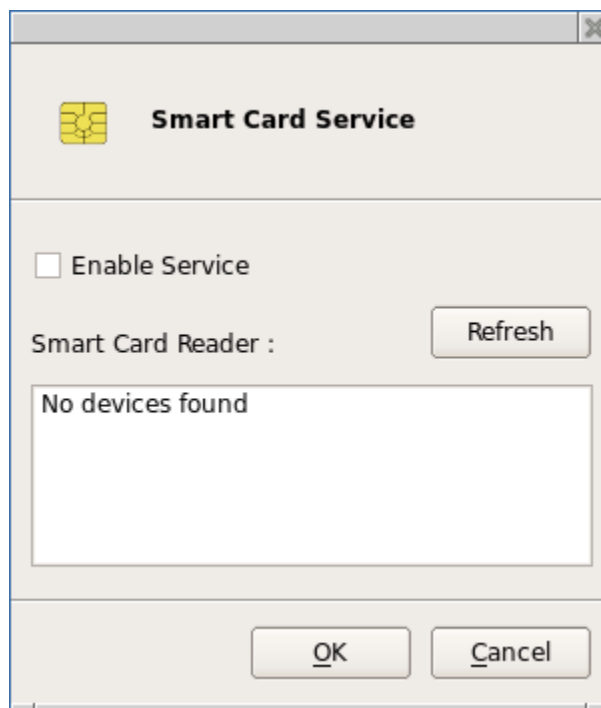


Clicking the **Advanced...** button will open the window with options to enable **Power Saving-DPMS** settings. Here you may configure the timers for each desired instance.



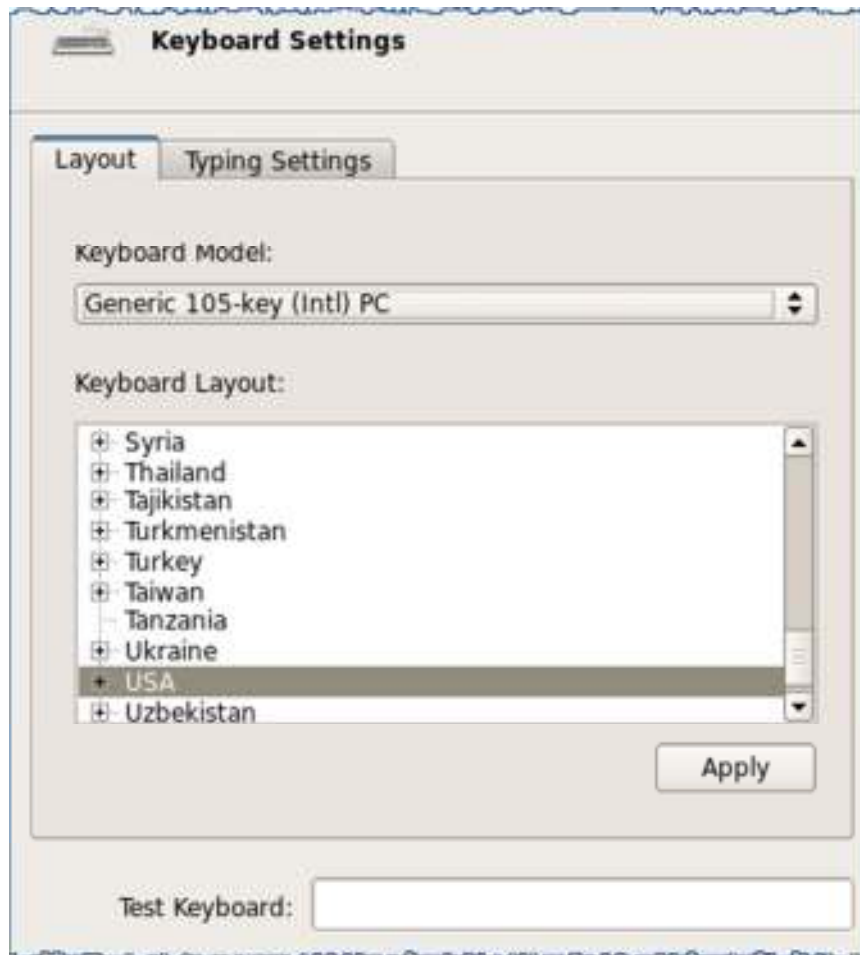
### Smart Card Service

The **Smart Card Service** window allows you to enable Smart Card detection and Refresh detection of any connected Smart Cards. Any devices found will be displayed in the Dialog box.

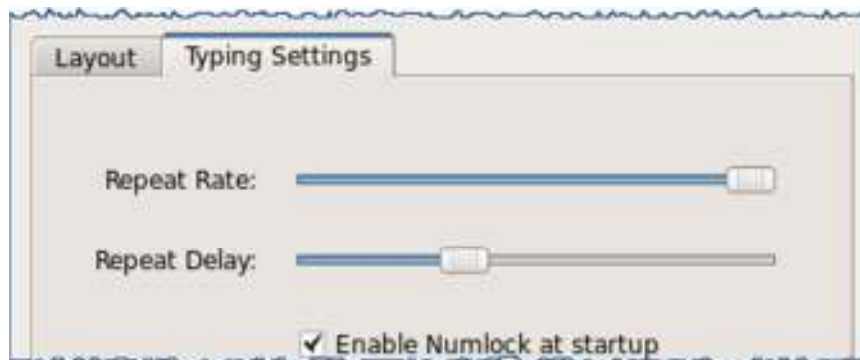


## Keyboard

Opening the **Keyboard** window displays the **Layout Tab** which allows you to select the keyboard model and country layout, as well as test keystroke output in the **Test Keyboard:** dialog box.

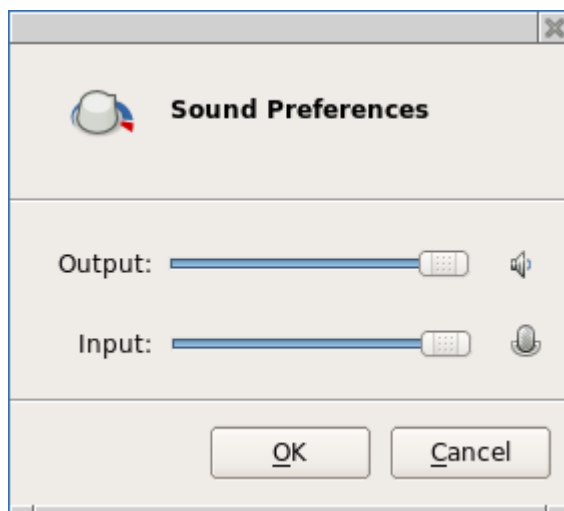


The keyboard character repeat parameters, and the **enable Numlock at startup** checkbox are located under the **Typing Settings Tab**.



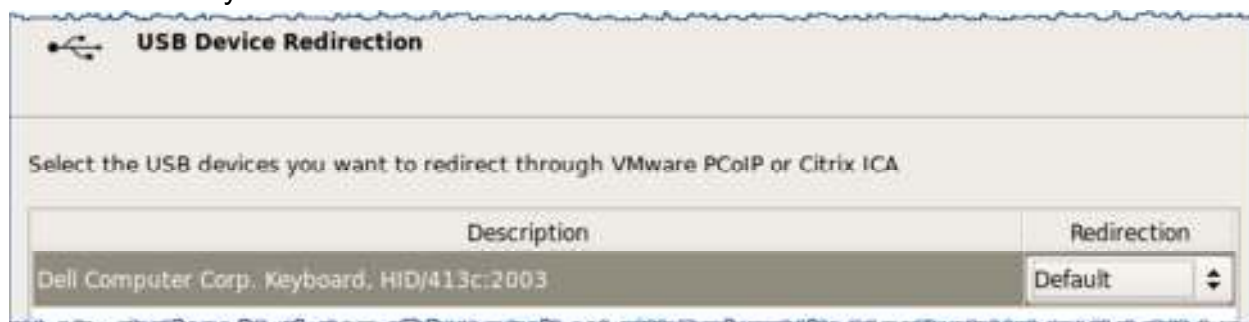
## Sound

The Sound window allows you to control the speaker (Output:) and microphone (Input:) volumes.



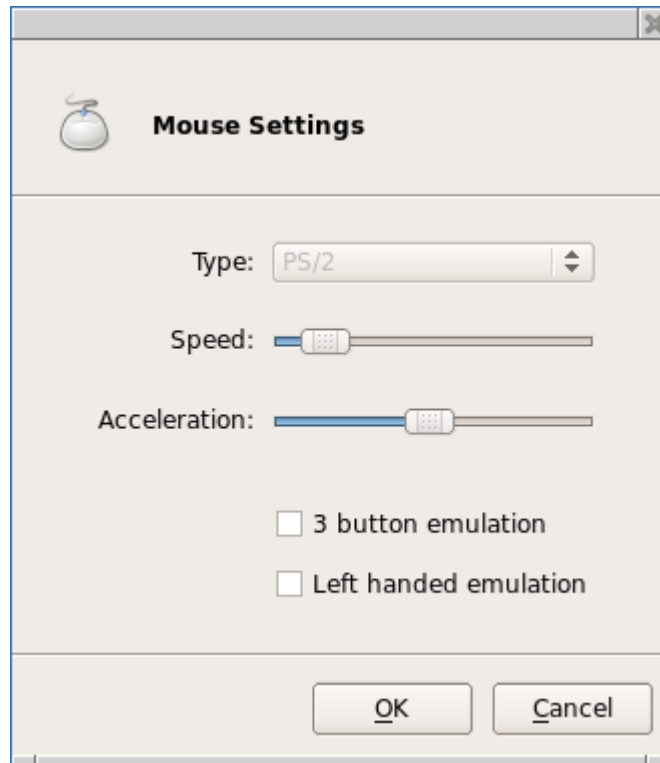
## USB Devices

USB Device Redirection for VMware and Citrix ICA may be controlled here. Options are **Default**, **Include** or **Exclude**. **NOTE: USB Redirection in VMware View Client** - when a USB printer or USB storage device is connected to the thin client, the VM (Virtual Machine) will immediately recognize the USB device and indicate that new hardware has been found. For printers, the printer driver must be installed on the VM in order for it to work correctly.



## Mouse

Currently only USB and PS2 mice are supported. The **Type** option is automatically detected at system boot with no ability to change it. The Mouse window allows you to set the mouse speed, and acceleration settings. You may also configure the mouse buttons for 3 button emulation or for left-handed users.



## Support

If you require support for your Linux-based thin client, please contact your region's nearest Technical Support Center. While 10ZiG Technology does provide technical support for its Linux-based thin clients, it does not provide support for the Linux operating system or application components that are obtained from the open source community and that may be included as part of the software image installed.

### Headquarters US

10ZiG Technology Inc.  
23309 N 17th Dr - Ste 100  
Phoenix, AZ 85027  
Phone 866-864-5250 • Fax 623-516-8697  
support@10zig.com  
sales@10zig.com  
www.10zig.com

### Headquarters UK

10 ZiG Technology Limited  
Unit S2, Troon Way Business Centre  
Humberstone Lane  
Leicester LE4 9HA  
Phone 44 (0) 116 2148650 • Fax 44 (0) 116 2148651  
support@10zig.eu  
sales@10zig.eu  
www.10zig.eu

## Serial Number

Each thin client has a unique serial number which is labeled as **ID CODE**: followed by the MAC address of the unit. The sticker with this information may be found either on the side, bottom or near the video output port, depending on which model you have. Please have this number available when contacting 10ZiG Technology's Technical Support for assistance. You may also find this number in the 10Zig Manager or while on the unit itself under **Control Panel> Network> Local Area> Status...** labeled **Physical Address**.